
**BUSINESSES REGISTERED FOR VAT
IN TYNE & WEAR AND ITS CITY REGION**

2006

April 2008

Sarah Crisp
Peter Sturman
Kadhem Jallab

Reference: EB 08/01

TYNE & WEAR RESEARCH AND INFORMATION
1st Floor Provincial House
Northumberland Street
Newcastle upon Tyne
NE1 7DQ
(0191) 277 1919

Supported jointly by the Cities of Newcastle and Sunderland and the Metropolitan Boroughs of Gateshead, North Tyneside and South Tyneside

CONTENTS

CONTENTS	1
KEY POINTS	2
1 INTRODUCTION	4
1.1 Population Covered.....	5
1.2 Economic Growth.....	5
2 TECHNICAL INTRODUCTION	6
3 CHANGES IN THE BUSINESS BASE	7
3.1 Stock of Businesses.....	7
3.2 Net Change during 2006.....	8
3.3 Net Change, 2000-2006.....	9
3.4 District Changes.....	9
4 REGISTRATION ('BUSINESS STARTS')	11
4.1 Registration Change, 1994-2006.....	11
4.2 Registrations - Change during 2006.....	13
5 DE-REGISTRATION ('BUSINESS FAILURES')	15
5.1 De-Registration Change, 1994-2006.....	15
5.2 De-Registrations - Change during 2006.....	17
6 INDUSTRIAL STRUCTURE OF THE BUSINESS BASE	18
6.1 The Industrial Mix of Businesses.....	19
6.2 Net Change by Industry.....	20
6.3 Industrial Net Changes Relative to the NE, Leeds CR and the UK.....	23
6.4 Cumulative Industrial Change from the start of 1994 to the end of 2006.....	24
6.5 Changes since 1980.....	26
 FIGURES	
3.1 Growth in VAT registered stocks.....	8
3.2 Growth in registered stocks (%).....	8
4.1 Changes in registrations TWCR, NE, Leeds CR, UK.....	11
5.1 Changes in De-registrations TWCR, NE, Leeds CR, UK.....	17
6.1 The Industrial Mix of the Business Base, TWCR, Leeds CR Start 2007.....	19
6.2 The Industrial Mix of the Business Base, Tyne & Wear, RoCR, Start 2007.....	20
6.3 Net Change in VAT Registered Stocks in TWCR, 2006.....	21
6.4 Net Change in VAT Registered Stocks in TW, 2006.....	22
 TABLES	
1.1 Distribution of Population within Tyne & Wear City Region, 2005.....	5
3.1 Business Registrations, De-registrations and Stocks Tyne & Wear and Local Authority Districts, 2006.....	7
3.2 Total and % net Change in Number of Businesses Registered for VAT; 2001-2006.....	9
3.3 Total and % net Change in Number of Businesses Registered for VAT; 1994-2006.....	10
4.1 Business Registrations in TWCR, 1994-2006.....	11
4.2 Registration Rate in TWCR by Industry, 1994-2006.....	12
4.3 Business Registrations in Tyne & Wear, 1994-2006.....	12
4.4 Change in Registrations by Industry: TWCR, North East and UK, 2006 compared With 2005.....	13
5.1 Business De-registrations in TWCR, 1994-2006.....	15

5.2	De-registration rate in TWCR by Industry, 1994-2006	16
5.3	Business De-registrations in TW, 1994-2006	16
5.4	Change in De-Registrations* by Industry: TWCR, Leeds CR, North East and UK, 2006 compared with 2005.....	18
6.1	Stock of Business and Annual Change in TWCR, 2002-2006	20
6.2	Stock of Business and Annual Change in TW 2002-2006.....	21
6.3	Net Change in Business Base by Industry for TW districts, 2005.....	22
6.4	Net Change in Business Base by Industry for Durham 4 districts, 2005.....	23
6.5	Net Change in Business Base by Industry for Northumberland 4 districts, 2005.....	23
6.6	VAT Registered Businesses by Industry: Tyne & Wear, North East and UK, Year end 2006.....	24
6.7	Cumulative Change in Business Numbers by Industry, 1994 -2006	25
6.8	Business Registrations, De-Registrations and Stocks in TWCR, 1998 -2006	26

APPENDICES

1	Business Registrations and De-Registration in Tyne & Wear City Region, 1994-2006.....	28
2	Business Registrations and De-Registrations in Leeds City Region, 1994-2006.....	40

CONTENTS

This report covers businesses registered for VAT in 2006 in Tyne & Wear (TW) and the City Region (TWCR). It also covers the Rest of the City Region (RoCR), plus three wider comparators; the North East (NE), Leeds City Region (Leeds CR) and the UK. District-level data are also given for 2006 only.

The report is one of three published by TWRI expanded to cover TWCR:

- 'Manufacturing Performance in Tyne & Wear and its City Region 2001-2005'
- 'Market Services Performance in Tyne & Wear and its City Region 2001-2005'
- 'Businesses Registered for VAT in Tyne & Wear and its City Region 2006'

This report gives insight into the number and mix of businesses registered for VAT at the City Region (CR) level, which had not previously been covered by TWRI.

It is an important advance to have such data for TWCR given that the need for information and analysis about dynamics in the economy at this level was identified by the OECD¹. This is in order to support public policies to increase City Region competitiveness.

The inclusion of data for Leeds CR also makes a major step to meet the suggestion by the OECD that City Region research should provide a view which places changes in the local economy in the context of activities in other areas.

The data set for this report is taken from the Inter-Departmental Business Register (IDBR), held by the Office for National Statistics (ONS). Contextual and technical notes on the data and comments on recent revisions are included in the report.

Caution:

The VAT series has been revised in the past. The figures include a degree of estimation (by ONS) for de-registrations, as some firms which are inactive become active again.

Nevertheless, this report provides a significant insight into business registration and de-registration in TWCR, TW and RoCR, compared through time and with the NE, Leeds CR and the UK.

This is, almost certainly, TWRI's last report on the VAT series. From autumn 2008, ONS is due to replace the VAT series with a new 'business' series, including firms registered for PAYE.

TWRI

April 2008

Whilst every effort has been taken to ensure the accuracy and reliability of the information presented in this report, TWRI does not accept responsibility for any errors in either the data or its analysis, howsoever they may have been caused.

¹ 'Building a Competitive City Region: The Case of Newcastle in The North East', Organisation for Economic Co-Operation and Development, 29-30 June 2006 (GOV/TDPC(2006)10). At www.newcastle.gov.uk

KEY POINTS

- This report shows firstly, and above all, that growth of the business base² has been significantly faster than in the UK. This has been helped by population stability (§1.1) and, particularly, by strong economic growth (§1.2).
- Secondly, business growth in TWCR has been led by Construction (in terms of percentage growth rates) – whereas in Leeds CR, Business Services have been more clearly the leading industry for growth of the business base.
- Thirdly, the Rest of the City Region (RoCR) is more important in terms of the business base (adding a very significant 61% to the Tyne & Wear business base) than in population (adds 54%), or the output of Construction (adds 44%), Manufacturing (adds 33%) and Market Services (adds 29%)³.
- Fourthly, since 2001, growth of the business base in both TW and RoCR has been at a similar rate which suggests similar drivers. This is a great improvement for TW since the 1990s, and especially 1980s, when population decline depressed the rate of growth of business numbers.

TYNE & WEAR CITY REGION PERFORMANCE

- Growth of TWCR's business base accelerated to 2.7% in 2006 (2.0% in the UK). (Table 6.1)
- Since 2002, **growth** in TWCR's **business base** has **consistently out-performed the UK** (§6.5.2). TWCR's medium-term (2001-06) growth rate (13.1%), has outperformed the UK (10.7%) [by a ratio of 1.22] (§3.3). It has out-performed Leeds CR since 1999.
- This faster growth in TWCR has been led by construction (§ 6.2.1).
- In each year, 2002–2006, TWCR's overall **business stock** grew by at least 1.8%. Aggregate growth over the five years was 12.2%, outperforming the UK (up 7.3%) by 4.9pp. Leeds CR had slower aggregate growth than TWCR (10.4%) (§6.2.1).
- Since, 1994, TWCR's **under-performance has fallen** (relative to the previous 14 years⁴) by three-fifths to 3.6 percentage points less growth than the UK [to 0.83 of UK's 20.7% growth], and 1.4 pp *more* growth than Leeds CR (§6.5.2).
- 'Top performers' long-term (1994-2006) were Gateshead, Blyth Valley and Durham [City] each with 25%+ growth (§3.4).

FALLS IN DE-REGISTRATIONS DRIVE GROWTH

- The **main process** driving **growth** in the **stock** of businesses since 1994 for all the comparator areas is the **improvement (fall) in de-registrations** –but especially in TWCR and the NE⁵. In the UK, and Leeds CR, the ratio of fall in de-registrations to the rise in registrations was around 2:1; but was near 3.1 in TWCR and 6.1 in the NE (§5.1). This suggests improved economic conditions (e.g. strong demand and low interest rates), and possibly better management, have been stronger drivers than any rise in entrepreneurship.

² 'Business base' is used throughout this report, for short, to mean the 'stock (number) of VAT registered businesses'.

³ Details in the TWRI reports 'Manufacturing Performance in Tyne & Wear City Region, 2001-05' and 'Market Services Performance in Tyne & Wear City Region, 2001-05'.

⁴ In 1980-1993, growth in TWCR was 9.5 percentage points slower than the UK and 3.6 pp below Leeds CR.

⁵ This effect was particularly strong in the North East (+215 registrations, -1,315 de-registrations). It has more effect in TWCR (+255 registrations, -725 de-registrations) than in Leeds CR (+885 registrations, -1,430 de-registrations) and the UK (+15, 335 registrations, -29,820 de-registrations)

- Business de-registrations in TWCR fell (improved) between 1994 and 2006 by over -24%, 5pp faster than Leeds CR, and 7pp faster than the UK, but 3pp slower than in the NE (§5.1).
- In 2005-06 there was little change in de-registrations in TWCR, down 25 firms (-1.1%), but faster than the UK (-0.3%). Leeds CR's de-registrations fell twice as quickly as TWCR's (down -2.3%). De-registrations rose marginally in the NE, up 0.1% (§5.2).

DRIVERS OF CHANGE

- **Weak Population:** TWCR's population growth (just 0.4% from 2002 to 2006) has been much slower than in the UK (growth of 2.1%). Thus, slower growth in business stock would be expected in TWCR than in the UK. But, TWCR's business stock grew *more quickly* than the UK (12.2% from 2002 to 2006, UK, 9.4%) (Table 6.1).
- But **very rapid growth in Construction** is also an important driver. 'Construction' was the industry with the fastest annual growth in TWCR in 2003, 2004 and 2006 (§6.2.1).

CONTRIBUTION OF THE REST OF THE CITY REGION

- RoCR adds a huge 61% to the stock of businesses registered for VAT (at the end of 2006), rather more than its 54% contribution to TW's population (§3.1).
- RoCR had 255 businesses registered for VAT for every 10,000 adults, 0.64 of the UK ratio, out-performing TW (214 businesses, 0.54 of UK) (§3.1).
- RoCR's medium-term (2001-2006) growth rate of 13.2% was only very marginally faster than TW (13.0%). This suggests that when TW's population was stable, growth of the business base was similar in both areas. In 2006, however, RoCR's business base grew faster; 3.1% (up 360), TW grew 2.5% (up 465) (§3.1)
- TWCR's medium-term growth was led by three districts; Gateshead, Derwentside and Blyth Valley, each with about 19% growth (§3.3). Gateshead has been particularly successful in expanding its base of Business Service firms. Growth in the latter two (in RoCR) seems to be linked to population growth.
- The fall in de-registrations in 1994-2006 was the same in TW and RoCR (both down about 24%). (§5.1)

DYNAMICS: TYNE & WEAR AND THE REST OF THE CITY REGION

- **Registrations are a bigger driver of change in RoCR** than in TW; in 1994-2006 annual registrations rose 22.4% in RoCR but just 2.6% in TW (§4.1).
- **TW's stronger population** (slower decline in the 1990s and stability since) **has limited its under-performance** (in 1994-2006) to just 1.4pp less growth than RoCR. In 1980-1993, TW had 9.7pp less growth than RoCR –probably largely driven by TW's population decline in the 1980s. (§6.5.2).

1. INTRODUCTION

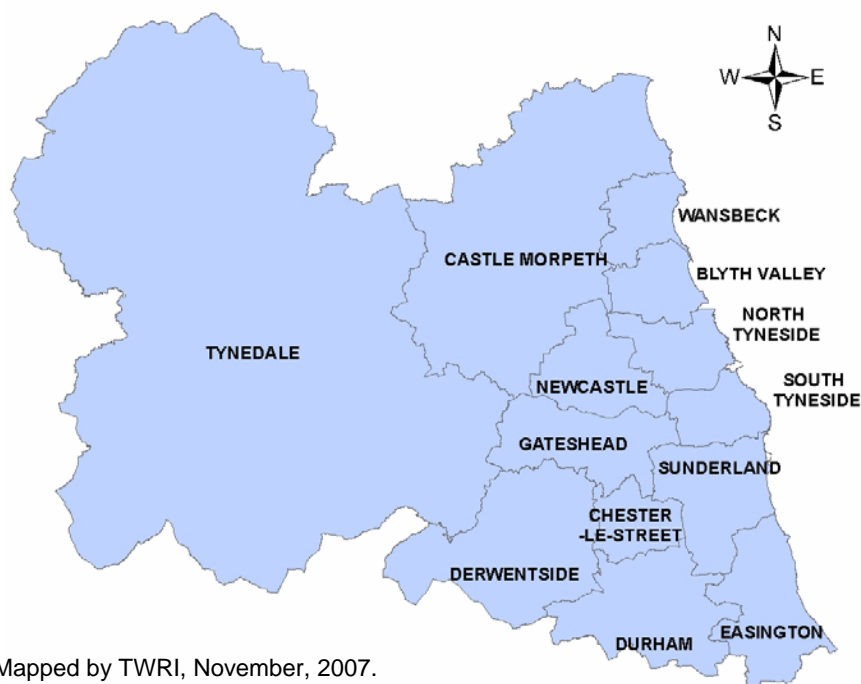
This report provides an analysis of businesses registered for VAT in Tyne & Wear (TW) and the City Region (TWCR), also with the Rest of the City Region (RoCR). Leeds City Region (Leeds CR) and UK data are provided for comparison, and analysis extends to district-level data.

This report covers mainly stock of businesses, registrations and de-registrations in 2006 and changes in these over various timescales. The main focus of this paper is on levels in 2006, with levels in previous years being used as time-series comparators.

This report shows that TWCR's business base grew 2.7% in 2006, faster than growth in Leeds CR (2.3%) and, particularly, the UK (2.0%). Growth in TWCR was stronger in RoCR (3.1%) than TW (2.5%), although all thirteen districts in RoCR and TW saw growth in their business base. TWCR's medium-term (2001-2006) growth rate (13.1%) out-performed both Leeds CR (11.1%) and the UK (10.7%). Medium-term growth in both RoCR (13.2%) and TW (13.0%) also out-performed the UK.

There are numerous earlier reports in this series, which covered the number of businesses registered for VAT in TW since the 1980s.

This is the first report in this series to cover TWCR (see map). TWCR includes the five TW Local Authority Districts (LADs) of Gateshead, Newcastle, North Tyneside, South Tyneside and Sunderland, with the addition of eight shire LADs; Blyth Valley, Castle Morpeth, Chester-le-Street, Derwentside, Durham, Easington, Tynedale and Wansbeck (which form RoCR).



Mapped by TWRI, November, 2007.
© Crown Copyright. All rights reserved
(Tyne & Wear Research and Information) Licence No. 10002987 (2007)

This is also the first report to give a Leeds CR comparison. This has been introduced to provide a benchmark for the TWCR data. Leeds CR⁶ includes the Local Authority Districts of Bradford, Calderdale, Kirklees, Leeds and Wakefield (effectively West Yorkshire) plus five additional districts of Craven, Harrogate, Selby and York in North Yorkshire and Barnsley in South Yorkshire.

This report continues to use data from the Inter-Departmental Business Register (IDBR), held by the Office for National Statistics (ONS), as supplied by the Small Business Service (SBS).

⁶ TWRI's series of Annual Monitoring Reports for Tyne Wear Partnership have, hitherto, benchmarked Tyne & Wear with West Yorkshire.

1.1 POPULATION COVERED

TWCR has a population of approximately 1.7 million, of which around 1 million are of working age⁷. The population in TWCR is equivalent to 58% of Leeds CR, which has a total population of 2.9 million. Around 1.7 million of these are of working age, meaning that the population of working age in TWCR is equivalent to around 59% of that in Leeds City Region.

Within TWCR, nearly two-thirds (65%) of the population are located in TW, 19% are in the four Durham districts and the remaining 15% in the four Northumberland districts (Table 1.1).

Table 1.1 Distribution of Population within Tyne & Wear City Region, 2005

Tyne & Wear	65.4%	Durham (4)	19.5%	Northumberland (4)	15.2%
Gateshead	11.5%	Chester-le-Street	3.2%	Blyth Valley	4.9%
Newcastle-upon-Tyne	16.2%	Derwentside	5.2%	Castle Morpeth	3.0%
North Tyneside	11.7%	Durham	5.4%	Tynedale	3.6%
South Tyneside	9.1%	Easington	5.6%	Wansbeck	3.7%
Sunderland	16.9%				

Source: ONS Mid-Year Population Estimates, 2005

TWCR's population during the period covered by this report was stable, rising by a very marginal 0.2% in 2001-2005. Population growth in Leeds CR was more than ten times larger than TWCR, but was still a fairly small increase of 2.9% over four years.

1.2 ECONOMIC GROWTH

The period 2001-05 was one of strong economic growth in Tyne & Wear, which TWRI believes continued into 2006. In the four years to 2005, the output (GVA) of Manufacturing in Tyne & Wear grew by an average of over 1% pa, that of Market Services by 3½% pa, and Construction by nearly 8% pa (These estimates use the GVA deflators to derive real growth rates from data in nominal terms)⁸

⁷ Population figures taken from ONS Mid-Year Population Estimates for 2005. Working-Age Population figures taken from ONS Annual Population Survey for the year to end-Dec 2005.

⁸ Details in TWRI's reports 'Manufacturing Performance in Tyne & Wear City Region 2001-2005' and Market Services Performance in Tyne & Wear City Region 2001-2005'. Use of GVA deflators may cause slight under-statement of manufacturing growth and slight over-statement of market services growth. The GVA deflators were for the UK.

2. TECHNICAL INTRODUCTION

This report presents the latest (2006) information for Tyne & Wear City Region (TWCR) on businesses registered for VAT from the Inter-Departmental Business Register (IDBR), held by the Office for National Statistics (ONS). The VAT data are derived from HM Customs and Excise records and supplied by the Small Business Service (SBS). The main focus is on changes during 2006 in the 'business base' (businesses registered for VAT).

It is important to note that many 'micro-businesses' (normally single-person businesses) fall below the VAT turnover threshold. There will be thousands of these in TWCR and its comparator Leeds CR.

Only broad comparisons can be made for 1980-2006. This is because of large increases in the VAT threshold in 1991 and 1993, as well as other changes to the estimates. Since 1994 the estimates have been based on counts of VAT registered *enterprises*; earlier counts were based on VAT *legal units*. An enterprise, as defined by the DTI, is a person, or group of people producing goods and services under their control and with their own legal identity. A branch of a larger organisation would not itself be an enterprise.

Comparisons are made geographically and industrially; TWCR with the North East, Leeds CR and the UK, between industries. TWCR is also sub-divided into Tyne & Wear (TW) and the Rest of the City Region (RoCR).

It should be noted that registrations and de-registrations do not equate to business start-ups and closures. Enterprises may have been trading for some time before reaching the registration threshold, or may fall below the threshold and continue to trade.

Caution: the numbers are rounded to the nearest 5, by SBS. This means percentage changes of low numbers are especially rough, e.g. a reported rise from 5 to 10 ('100%') could actually be from 7 to 8 (up 14%).

3. CHANGES IN THE BUSINESS BASE

3.1 STOCK OF BUSINESSES

At the end of 2006, TWCR had 31,260 businesses registered for VAT (Table 3.1). This is a relatively small business base of 229 businesses for every 10,000 adults, only 57% of the UK average of 399. Within the City Region, Tyne & Wear (214) was outperformed by RoCR (255; 64% of UK), with Northumberland 4 strongest. Castle Morpeth is very close to the UK average (96%), Tynedale exceeds it by 40%.

Table 3.1: Business Registrations, De-registrations and Stocks: Tyne & Wear and Local Authority Districts, 2006

Area	Stock at start 2006	Registrations	De-registrations	Stock at end 2006	Adult Population*	Ratio of stock at end of 2006 per 10,000 of adult population	Net Change (No.)	% Change
TWCR	30,430	3,070	2,240	31,260	1,367,900	229	830	2.7
RoCR	11,755	1,120	760	12,115	474,900	255	360	3.1
Leeds CR	77,420	7,670	5,890	79,195	2,312,400	342	1,775	2.3
North East GOR	48,280	4,630	3,475	49,435	2,086,300	237	1,155	2.4
England	1,635,845	159,315	124,660	1,670,500	41,089,000	407	34,655	2.1
UK	1,917,615	182,205	143,070	1,956,750	49,050,200	399	39,135	2.0
Tyne & Wear	18,675	1,950	1,485	19,140	893,000	214	465	2.5
Gateshead	3,745	345	265	3,825	156,000	245	80	2.1
Newcastle	5,535	555	440	5,650	224,400	252	115	2.1
North Tyneside	3,155	390	250	3,295	159,900	206	140	4.4
South Tyneside	1,990	210	150	2,050	123,500	166	60	3.0
Sunderland	4,250	450	375	4,325	229,200	189	75	1.8
C Dur 4	5,445	565	365	5,645	268,500	210	200	3.7
Chester-le-Street	885	100	65	920	43,500	211	35	4.0
Derwentside	1,645	190	90	1,745	70,800	246	100	6.1
Durham	1,660	160	130	1,690	78,500	215	30	1.8
Easington	1,255	115	80	1,290	75,700	170	35	2.8
Northumberland 4	6,310	555	395	6,470	206,400	313	160	2.5
Blyth Valley	1,270	140	90	1,320	65,800	201	50	3.9
Castle Morpeth	1,525	145	95	1,575	41,100	383	50	3.3
Tynedale	2,680	190	145	2,725	49,000	556	45	1.7
Wansbeck	835	80	65	850	50,500	168	15	1.8

Note: * Aged 16 and over. Population figures are taken from the 2006 Mid-Year Estimates

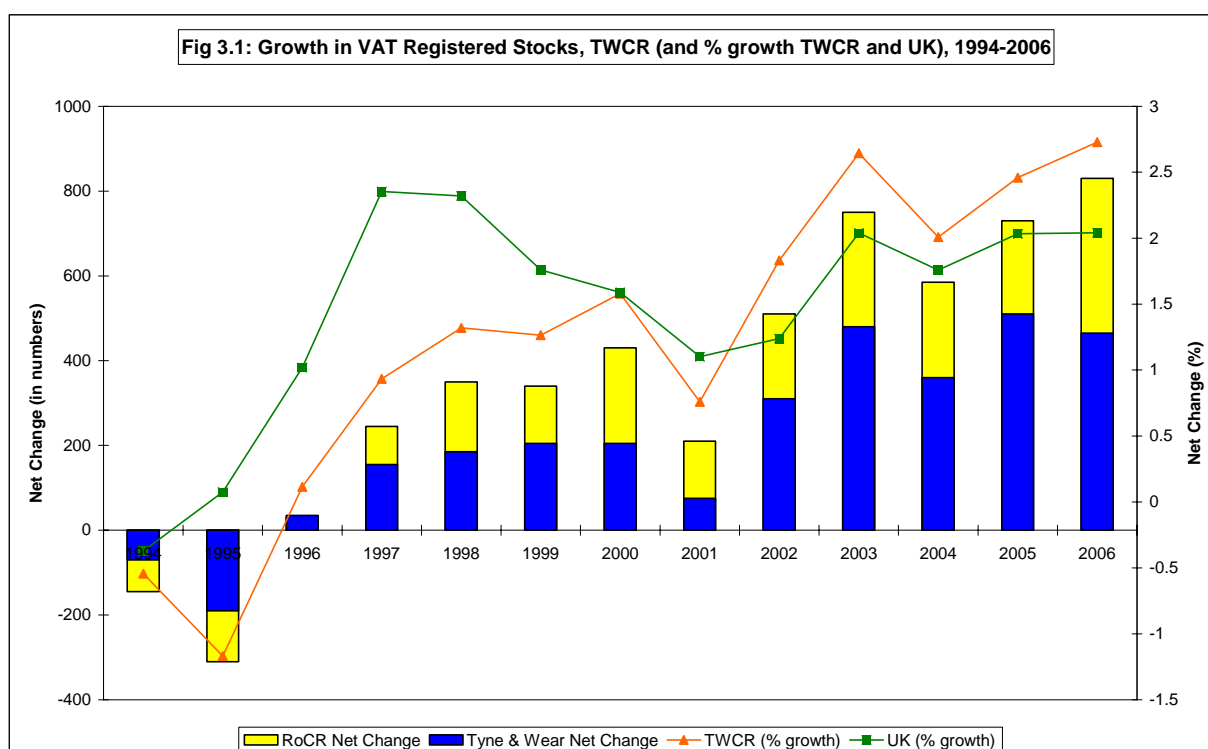
Figures may not tally exactly due to rounding. Stocks, Registration, De-Registrations and Net Change are taken from SBS dataset, not calculated by TWRI

Source: Small Business Service

In relation to population, Leeds CR has a huge 50% more businesses than TWCR. Leeds CR had 79,200 businesses registered for VAT, 342 businesses for every 10,000 adults (86% of the UK average). TWCR's business base is under-represented in relation to population. It has 2.8% of the UK population but only 1.6% of UK businesses registered for VAT. In TWCR, Tyne & Wear contributes 61% of stock and 65% of the population.

3.2 NET CHANGE DURING 2006

During 2006, growth of TWCR's business base accelerated to (a record) 2.7% or 830 firms, from 2.5% (730 firms) in the previous year (2005) (Fig 3.1). This was faster than the growth in Leeds CR (2.4%, 1,155 firms). RoCR's business base grew faster than Tyne & Wear in 2006 (3.1% and 2.5% respectively) but Tyne & Wear's growth was still historically strong. UK growth was slower than NE and TWCR with growth of 2.0% in 2006 (39,135 firms), and 2005 (38,200 firms). The revisions which were made to the 2005 VAT data (from those originally published in 2006) show that growth in Tyne & Wear was faster than first recorded.



3.3 NET CHANGE, 2001 – 2006

Table 3.2: Total and % Net Change in Number of Businesses Registered for VAT; 2001-2006

Area	Stock Start 2001	Stock End 2006	No.	% Change
TWCR	27,650	31,260	3,610	13.1
RoCR	10,705	12,115	1,410	13.2
Leeds CR	71,310	79,195	7,885	11.1
North East GOR	44,335	49,435	5,100	11.5
England	1,503,765	1,670,500	166,735	11.1
UK	1,768,405	1,956,750	188,345	10.7
Tyne and Wear	16,945	19,140	2,195	13.0
Gateshead	3,210	3,825	615	19.2
Newcastle	5,170	5,650	480	9.3
North Tyneside	2,855	3,295	440	15.4
South Tyneside	1,810	2,050	240	13.3
Sunderland	3,900	4,325	425	10.9
C Dur 4	4,875	5,645	770	15.8
Chester-le-Street	835	920	85	10.2
Derwentside	1,470	1,745	275	18.7
Durham	1,450	1,690	240	16.6
Easington	1,120	1,290	170	15.2
Northumberland 4	5,830	6,470	640	11.0
Blyth Valley	1,110	1,320	210	18.9
Castle Morpeth	1,515	1,575	60	4.0
Tynedale	2,470	2,725	255	10.3
Wansbeck	735	850	115	15.6

Source: Small Business Service

TWCR's medium-term (2001-06) growth rate was 13.1%, outperforming the UK growth (10.7%) [by a ratio of 1.22] (Table 3.2). TWCR's medium-term growth was also faster than the North East (11.5%) and Leeds CR (11.1%). Growth was only very slightly faster in RoCR than Tyne & Wear (13.2% and 13.0% respectively). Growth was led principally by the fast rates of growth in Gateshead (19.2%), Derwentside (18.7%) and Blyth Valley (18.9%). [Gateshead's fast growth reflects its success in attracting particularly Business Services firms, §3.4. Business growth in Derwentside and Blyth Valley correlates with new house-building and population growth – Ed.]

3.4 DISTRICT CHANGES

In 2006, all thirteen districts saw a rise in their business base (Table 3.1). The North Durham 4 districts experienced the fastest growth in stock at 3.7% (up 200 firms), with Derwentside accounting for half of this and leading the growth at 6.1% (100 firms) [possibly reflecting its population growth]⁹. Numerically, North Tyneside had the largest growth with 140 net registrations (up 4.4%).

Over the long-term, between 1994 and 2006, overall growth in the business base in TWCR was 17.1% (4,560 firms) (Table 3.3). As a ratio to UK growth, this is 0.83 of the UK's 20.7%. This 'slow' growth, however, still outperformed Leeds CR (up 15.6% or 10,715 firms) (a ratio of 0.75 to UK). Nevertheless, annual growth of the business base in all the areas is highly correlated, strongly suggesting a single main factor¹⁰ which operates at national and City Region level (Fig. 3.2).

Table 3.3: Total and Net % Change in Number of Businesses Registered for VAT; 1994-2006

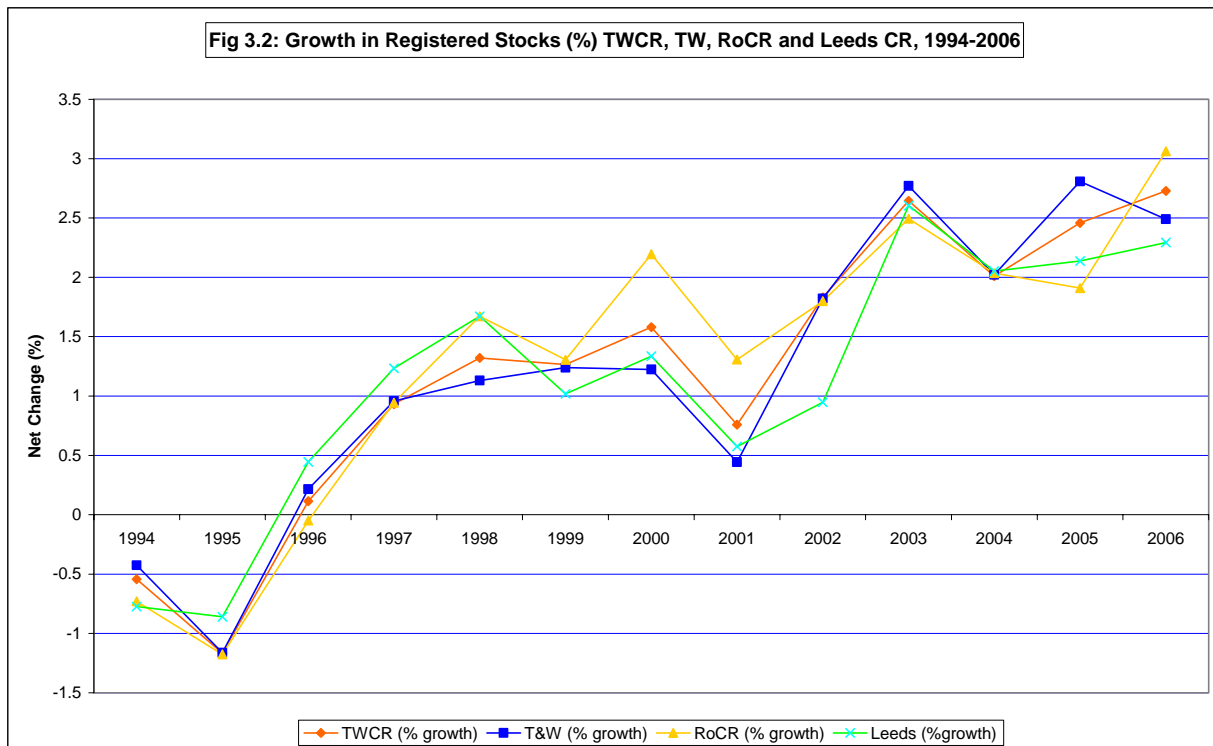
Area	Stock Start 1994	Stock End 2006	No.	% Change
TWCR	26,700	31,260	4,560	17.1
RoCR	10,285	12,115	1,830	17.8
Leeds CR	68,480	79,195	10,715	15.6
North East GOR	43,525	49,435	5,910	13.6
England	1,367,250	1,670,500	303,250	22.2
UK	1,621,760	1,956,750	334,990	20.7
Tyne and Wear	16,415	19,140	2,725	16.6
Gateshead	3,060	3,825	765	25.0
Newcastle	5,035	5,650	615	12.2
North Tyneside	2,820	3,295	475	16.8
South Tyneside	1,755	2,050	295	16.8
Sunderland	3,745	4,325	580	15.5
C Dur 4	4,745	5,645	900	19.0
Chester-le-Street	780	920	140	17.9
Derwentside	1,460	1,745	285	19.5
Durham	1,350	1,690	340	25.2
Easington	1,155	1,290	135	11.7
Northumberland 4	5,540	6,470	930	16.8
Blyth Valley	1,035	1,320	285	27.5
Castle Morpeth	1,440	1,575	135	9.4
Tynedale	2,340	2,725	385	16.5
Wansbeck	725	850	125	17.2

Source: Small Business Service

In TWCR, the long-term top performers were Blyth Valley, Durham [City] and Gateshead, each with 25%+ growth. Blyth Valley had the fastest rise in businesses registered for VAT over the period (up 27.5% or 285 firms). This was followed by Durham (up 25.2% or 340 firms), and Gateshead (up 25.0% or 765 firms). Castle Morpeth experienced the slowest rate of growth (up 9.4% or 135 firms). Within Tyne & Wear, Newcastle had the slowest rate of growth (up 12.2% or 615 firms).

⁹ ONS estimates 2001 and 2006 imply 1.5% population growth.

¹⁰ Such as the annual real growth rate of the UK economy and/or interest rates.



‘Business Services’ was the industry with the largest growth in its business base between 1994 and 2006 in all large areas (TWCR, the North East, Leeds CR and nationally). Of all the districts, Newcastle had the largest numerical rise in businesses in this sector (up 845 firms) and Gateshead had the fastest rise (up a very rapid 136%, up 560 firms).

By industry, between 1994 and 2006, ‘Retailing & Wholesale’ had the largest numerical falls in 11 of the 13 districts of TWCR (excluding Chester-le-Street and Tynedale), in the North East, Leeds CR and nationally (§6). Castle Morpeth had a particularly fast fall in Retailing (-90, -23%) [contributing a large part to its overall weakness]. Newcastle and Durham both experienced a fast fall in ‘Retail & Wholesale’, -240, -16% in Newcastle and -55, -13% in Durham.

Although most districts gained ‘Manufacturing’ firms, Newcastle suffered a big loss of 140 (-27.2%) firms. Newcastle was also the only district to suffer a loss in ‘Construction’, with a small fall of 10 firms (down 1.9%).

‘Agriculture, Forestry & Fishing’ fell in each district (apart from Sunderland and Blyth Valley), Leeds CR, the North East and nationally with the largest (district) numerical fall in Castle Morpeth (down 30 firms, -8.6%). Within Tyne & Wear, Agriculture’s largest numerical fall was in Newcastle (down 20 firms, -33.3%). [Part of this will reflect some of land-use change from farming into development in Newcastle’s Great Park].

4. REGISTRATION ('BUSINESS STARTS')

Registrations are not the same as business starts because businesses can exist below the VAT threshold before registering.

4.1 REGISTRATION CHANGE, 1994-2006

Between 1994 and 2006, annual total registrations in TWCR rose by [only] 9.1% (Table 4.1 and Figure 4.1) which was virtually the same as the UK (up 9.2%) (Appendix Table A1.1). [Once TWCR's weaker-than-UK trend in population is taken into account, TWCR's registrations were stronger than the UK.] This was led principally by RoCR (rise of 22.4%). Registrations in Tyne & Wear rose only 2.6%. Leeds CR saw a rise of 13.0% in this period (Appendix Table A2.4.1). Registrations in the North East rose 4.9% (Appendix Table A1.3).

Table 4.1: Business Registrations in TWCR, 1994-2006

SIC 92	Industry	1994	1995	1996	1997	1998	1999	2000	2001	2002	2003	2004	2005	2006	Total
A,B	Agriculture	50	40	30	25	50	35	35	30	75	35	35	50	35	525
C,E	Mining & Utilities	0	0	0	0	0	0	0	0	0	0	0	0	0	0
D	Manufacturing	215	230	245	220	205	215	200	190	225	210	165	170	185	2,675
F	Construction	235	230	270	295	255	290	290	300	320	405	400	415	405	4,110
G	Retailing & Wholesale	720	630	685	630	610	660	575	590	655	715	675	650	675	8,470
H	Hotels & Catering	410	385	395	395	375	450	485	465	465	480	475	420	460	5,660
I	Transport & Comms.	145	160	135	140	155	140	155	160	185	160	150	205	180	2,070
J	Finance	30	10	5	20	0	10	10	10	15	10	5	15	5	145
K	Business Services	560	615	650	680	780	720	825	745	820	935	840	855	880	9,905
L,O	Public Admin & Other	335	275	180	235	205	160	165	130	125	140	155	140	150	2,395
M,N	Education & Health	95	45	30	30	30	25	40	35	35	40	30	30	55	520
	Total	2,815	2,650	2,630	2,675	2,655	2,745	2,790	2,685	2,950	3,150	2,960	3,005	3,070	36,780

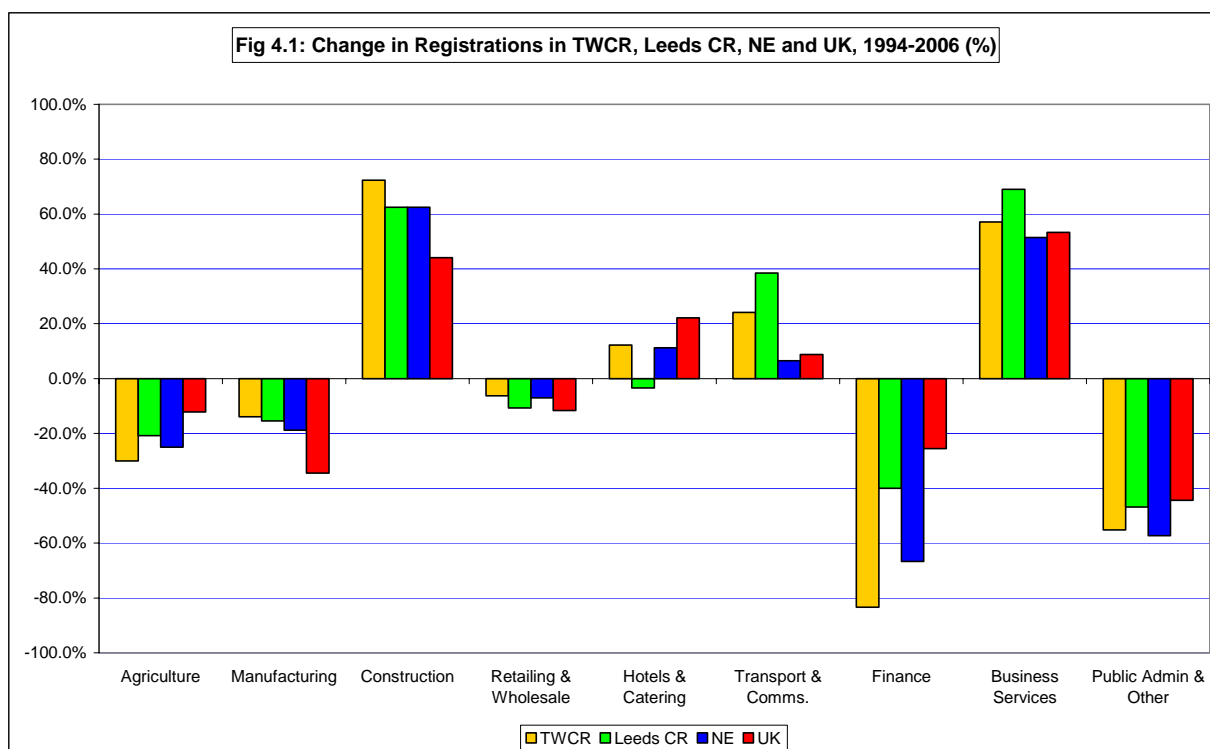
Note: Figures may not tally exactly due to rounding

Registration of 2 or less are recorded as 0

Source: Small Business Service

Registrations in TWCR *rose* between 1994 and 2006 (Table 4.1) in four industries:

- These were led by 'Business Services' (up 320, 57%)
- 'Construction' (up 170, 72%)
- 'Transport & Communications' (up 35, 24%)
- 'Hotels & Catering' (up 50, 12%)



(Note: ‘Mining & Utilities’ and ‘Education & Health’ are excluded from Figure 4.1 because they are small and had numerically very small changes in registrations)

In TWCR the *falls* in registrations were:

- Largest numerically in ‘Public Admin. & Other Services’ (down 185, -55%)
- Large also in ‘Retailing & Wholesale’ (down 45, -6%) and ‘Education & Health’ (down 40, -42%)
- Smaller in ‘Manufacturing’ (down 30, -14%) and ‘Finance’ (down 25, -83%)

‘Business Services’ had the highest *rate of registration* (239%) [measured as a % of the stock in 1994], followed by ‘Hotels & Catering’ (217%) (Table 4.2).

Table 4.2: Registration Rate in TWCR, by Industry (% of base at start of year)

SIC 92	Industry	1994	1995	1996	1997	1998	1999	2000	2001	2002	2003	2004	2005	2006	Total (1994-2006)
A,B	Agriculture	2.7	2.2	1.6	1.4	2.8	2.0	2.0	1.7	4.3	2.0	2.0	2.8	2.0	28.1
C,E	Mining & Utilities	0.0	0.0	0.0	0.0	0.0	0.0	0.0	0.0	0.0	0.0	0.0	0.0	0.0	0.0
D	Manufacturing	7.9	8.4	9.1	8.0	7.4	7.7	7.2	6.8	8.1	7.5	5.9	6.1	6.6	97.8
F	Construction	7.6	7.8	9.6	10.6	9.0	10.3	10.1	10.2	10.6	13.0	12.2	12.0	11.2	133.0
G	Retailing & Wholesale	8.5	7.7	8.7	8.1	7.9	8.7	7.6	8.0	9.0	9.8	9.1	8.7	9.0	99.8
H	Hotels & Catering	15.7	15.1	15.6	15.6	14.5	17.2	18.0	16.6	16.3	16.3	15.7	13.6	14.5	216.9
I	Transport & Comms.	11.2	12.3	10.1	10.5	11.6	10.2	11.3	11.6	13.3	11.2	10.4	14.1	11.8	160.5
J	Finance	19.4	5.6	3.3	14.3	0.0	7.4	6.9	6.3	9.4	5.9	2.9	8.3	2.7	93.5
K	Business Services	13.5	14.2	14.4	14.2	15.4	13.2	14.4	12.2	13.0	14.3	12.1	11.9	11.9	239.3
L,O	Public Admin & Other	18.7	14.8	9.6	13.0	11.1	8.6	8.9	7.0	6.8	7.8	8.6	7.7	8.2	133.8
M,N	Education & Health	20.0	8.4	6.3	6.4	6.9	5.9	9.3	7.9	7.9	8.7	6.2	5.9	10.5	109.5
	Total	10.5	10.0	10.0	10.2	10.0	10.2	10.2	9.7	10.6	11.1	10.2	10.1	10.1	137.8

Source: Small Business Service

By industry, TWCR's registrations have been stronger than all comparator areas (Leeds CR, NE and the UK) in three industries:

- 'Construction' had a large rise in registrations in TWCR (up 170, 73%). This was faster than Leeds CR (up 400, 63%) (See Table A.2.4.1) and the North East (up 250, 63%). The UK saw a much slower rise of 44% (7,020). 'Construction' also rose significantly in Tyne & Wear (up 100, 65%) (Table 4.3).
- 'Manufacturing' saw a large UK fall (down 4,885, or -35%) (See Table A1.1). The fall in TWCR was much less than half as fast -14% (-30).
- 'Retailing & Wholesale' fell slightly in all comparator areas, with TWCR having the smallest fall of -6% (-45).

Table 4.3: Business Registrations in T&W, 1994-2006

SIC 92	Industry	1994	1995	1996	1997	1998	1999	2000	2001	2002	2003	2004	2005	2006	Total
A,B	Agriculture	10	10	10	5	15	5	10	5	15	15	10	10	10	130
C,E	Mining & Utilities	0	0	0	0	5	5	0	5	0	0	0	0	0	15
D	Manufacturing	150	155	180	155	140	150	135	130	150	150	105	130	120	1,850
F	Construction	155	155	180	185	160	185	180	180	200	260	240	275	255	2,610
G	Retailing & Wholesale	505	425	460	435	400	445	375	405	455	470	445	425	430	5,675
H	Hotels & Catering	275	265	235	265	245	290	305	325	310	330	310	270	300	3,725
I	Transport & Comms.	90	100	75	85	100	85	95	100	125	85	85	110	100	1,235
J	Finance	20	5	5	15	10	15	10	10	20	5	10	20	10	155
K	Business Services	415	420	455	460	490	500	535	505	580	630	580	580	590	6,740
L,O	Public Admin & Other	220	180	125	160	135	100	110	75	80	105	100	100	100	1,590
M,N	Education & Health	60	30	25	20	25	20	20	25	25	35	25	20	30	360
	Total	1,900	1,750	1,750	1,790	1,720	1,805	1,780	1,760	1,955	2,085	1,910	1,940	1,950	24,095

Note: Figures may not tally exactly due to rounding

Registration of 2 or less are recorded as 0

Source: Small Business Service

TWCR performed better than the UK (and the North East) but not as fast as Leeds CR in two industries, 'Business Services' and 'Transport & Communications':

- 'Business Services' had the fastest rise in registrations (57%) for all of the comparator areas, except Leeds CR. Registrations rose in Leeds CR's [very strong] 'Business Services' (up 1,070, 69%) [This is 12pp faster rise than in TWCR and over 3.3 times the numerical growth]. The UK saw a rise of 53%, or 23,660. The North East was slower than the UK (up 435, 51%).
- In 'Transport & Communications', Leeds was the strongest comparator with a rise of 38% (up 125). TWCR's rise of 24% (up 35) was still much faster than the UK and the North East (9% and 7% respectively).

The largest *falls* in registrations for TWCR, Leeds CR, the North East and the UK were in 'Finance' and 'Public Admin. & Other Services'.

- TWCR suffered the (proportionally) largest fall in registrations in 'Finance' of -83% (down ['just'] 25 firms). [The North East also saw a large fall of -67% (down 30 firms) but this was nearly all due to TWCR]. Leeds CR and the UK saw much slower falls of -40% (-40) and -26% (-560) respectively.
- 'Public Admin & Other Services' [presumably mainly Other Services] suffered a large numerical fall in all comparator areas. The North East had the fastest fall of -57% (-315), followed by TWCR (-55%, -185). Leeds CR fared slightly better with a fall of 295, or -47%. In the UK, registrations fell by 8,680 (-44%). In Tyne & Wear the largest numerical fall in registrations was in 'Public Admin. & Other Services' (down 120, or -55%).

4.2 REGISTRATIONS – CHANGE DURING 2006

Overall, TWCR registrations rose by 2.2% in 2006 [compared with 2005] (up 65 firms) (Table 4.4).

Table 4.4: Change in Registrations* by Industry: TWCR, Leeds CR, North East and UK, 2006 compared with 2005

SIC 92	Industry	TWCR Change		Leeds CR Change		NE Change		UK Change	
		No.	%	No.	%	No.	%	No.	%
A,B	Agriculture	-15	-30.0	-15	-13.6	-45	-37.5	-95	-2.4
C,E	Mining & Utilities	0	0.0	0	0.0	5	100.0	-25	-13.5
D	Manufacturing	15	8.8	-25	-5.1	-5	-1.8	-265	-2.8
F	Construction	-10	-2.4	45	4.5	-25	-3.7	125	0.5
G	Retailing & Wholesale	25	3.8	-110	-6.3	30	2.9	-1135	-3.2
H	Hotels & Catering	40	9.5	-10	-1.2	30	4.5	40	0.2
I	Transport & Comms.	-25	-12.2	-20	-4.3	-60	-19.7	-255	-2.9
J	Finance	-10	-66.7	5	9.1	-15	-50.0	-200	-10.9
K	Business Services	25	2.9	150	6.1	0	0.0	1005	1.5
L,O	Public Admin & Other	10	7.1	20	6.3	20	9.3	705	6.9
M,N	Education & Health	25	83.3	25	23.8	35	58.3	580	25.1
	Total	65	2.2	25	0.3	-35	-0.8	470	0.3

Note: na - base year zero, percentage change not applicable

* Registrations do not equate to 'business starts' because they include changes for other reasons, e.g. change of name, change of proprietor, re-opening of existing business.

All figures are rounded to the nearest 5 (by SBS). Change means a change of 0-2

Caution: these figures are very vulnerable to cumulative rounding errors (max about ±65 for TWCR, ± 50 for Leeds CR)

Source: Small Business Service

Registrations rose in six industries [with some correlation with consumer spending, marked *]:

- The largest numerical rise was in 'Hotels & Catering'* (up 40, 9.5%)
- 'Education & Health'* (up 25, 83.3%)
- 'Business Services' (up 25, 2.9%)
- 'Retailing & Wholesale'* (up 25, 3.8%)
- 'Manufacturing' (up 15, 8.8%)
- 'Public Admin. & Other Services'* (up 10, 7.1%).

Registrations fell in four industries:

- The largest numerical fall was in 'Transport & Communications' (down 25, -12.2%)
- 'Agriculture' (down 15, -30.0%)
- 'Finance' (down 10, -66.7%)
- 'Construction' (down 10, -2.4%).

Registrations remained the same in 'Mining & Utilities'

In Leeds CR, total registrations rose by just 0.3% [as in the UK] (up 25 firms). Registrations rose in five industries with the largest numerical rise in 'Business Services' (up 150 firms, or 6.1%). There was no change in 'Mining & Utilities'. Registrations fell in five industries in Leeds CR. The largest fall was in 'Retailing & Wholesale' (down 110, -6.3%).

In the UK, overall, rises in registrations in 2006 were much weaker than in TWCR at 0.3%. [Indeed, in the North East, registrations fell 0.8%]. Registrations rose in five industries in the UK. As in Leeds CR, the largest rise numerically was in 'Business Services' (up 1,005 firms, 1.5%). Other large UK rises occurred in 'Public Admin. & Other Services' (up 705, 6.9%) and 'Education & Health' (up 580, [a remarkable] 25.1% [perhaps linked to growing private sector and 'third sector' provision of these 'Public Services']).

UK registrations fell in six industries. The largest fall was in 'Retailing & Wholesale' (down 1,135, -3.2%). Other large falls were in 'Manufacturing' (down 265, -2.8%), 'Transport & Communications' (down 255, -2.9%) and [particularly] 'Finance' (down 200, -10.9%).

In the North East, registrations actually fell, by 35 (-0.8%) in 2006. As in TWCR, the largest fall in registrations was in 'Transport & Communications' (down 60, -19.7%) [possibly fewer call-centres etc.]. Other large falls occurred in 'Agriculture' (down 45, -37.5%), and 'Construction' (down 25, -3.7%). The NE's largest rise in registrations was in 'Education & Health' (up 35, 58.3%).

5. DE-REGISTRATION ('BUSINESS FAILURES')

Note: De-Registrations can occur for reasons other than business failure. The reasons include:

- Takeover
- Retirement
- Change of proprietor
- Change of business name
- Decline below the VAT threshold

5.1 DE- REGISTRATION CHANGE, 1994-2006

Importantly, the improvement (fall) in de-registrations is the *main reason* for the growth in the stock of the businesses since 1994 for all the comparator areas; Between 1994 and 2006, annual de-registrations have improved (fallen) in TWCR, the North East, the UK and Leeds CR. Business de-registrations in TWCR fell (improved) by 24.5%, down 725, to 2,240 in 2006 (Table 5.1 and Fig 5.1). De-registrations fell in Tyne & Wear and RoCR over the period at similar rates (24.6%,-485 and 23.6%, -235 respectively).

Table 5.1: Business De-Registrations in TWCR, 1994-2006

SIC 92	Industry	1994	1995	1996	1997	1998	1999	2000	2001	2002	2003	2004	2005	2006	Total
A,B	Agriculture	55	60	70	65	50	55	35	55	45	35	65	55	50	695
C,E	Mining & Utilities	0	0	0	0	0	0	0	0	0	0	0	0	0	0
D	Manufacturing	250	240	200	195	195	220	190	195	235	190	185	165	190	2,650
F	Construction	420	345	295	265	260	245	235	225	240	220	230	265	250	3,495
G	Retailing & Wholesale	980	950	810	755	695	685	705	725	630	650	615	565	530	9,295
H	Hotels & Catering	460	415	380	340	340	380	370	420	385	385	415	340	330	4,960
I	Transport & Comms.	140	140	135	135	110	135	150	150	145	170	140	130	120	1,800
J	Finance	5	35	10	10	0	5	10	5	10	5	5	5	0	105
K	Business Services	370	420	375	390	405	455	450	540	585	560	575	605	605	6,335
L,O	Public Admin & Other	250	265	250	195	190	160	190	135	160	125	135	110	115	2,280
M,N	Education & Health	30	80	50	65	30	30	15	45	10	35	15	5	5	415
	Total	2,965	2,960	2,585	2,435	2,285	2,385	2,365	2,475	2,450	2,420	2,375	2,265	2,240	32,205

Note: Figures may not tally exactly due to rounding

Registration of 2 or less are recorded as 0

Source: Small Business Service

Overall UK de-registrations fell by 17.2% (-29,820) between 1994 and 2006. TWCR, the North East, Leeds CR and Tyne & Wear all fared better than the UK. In the North East de-registrations fell by about 10pp more than the UK, -27.5% (-1,315) (see Tables A1.2 and A1.4 in Appendices). Leeds CR did about 2pp better than the UK with a fall of -19.5% (-1,430) (Table A2.5.1).

Generally, de-registrations amongst TWCR *industries* improved (fell) between 1994 and 2006. The largest numerical falls were in 'Retailing & Wholesale' (down 450, -45.9% [reflecting stronger growth of retail sales, and a diminished base of retail firms]). Relatively large falls were also recorded in 'Construction' (down 170, -40.5%), 'Public Admin. & Other' (down 135, -54.0%) and in 'Hotels & Catering' (down 130, -28.3%) [These all reflect the boom in consumer spending, and in construction-Ed].

'Business Services' was the only industry where de-registrations rose in TWCR (up 235, 63.5%). The number of de-registrations remained the same in 'Mining & Utilities'.

The highest rates of de-registration in TWCR in 1994-2006 were in ‘Hotels & Catering’ (190.0%) and ‘Business Services’ (153.0%) (Table 5.2). [These rates suggest that the average Hotel or Catering business de-registers within 6 years and that in Business Services in 8 years]. [Restaurants are famous for high failure rates/short business life expectancy.]

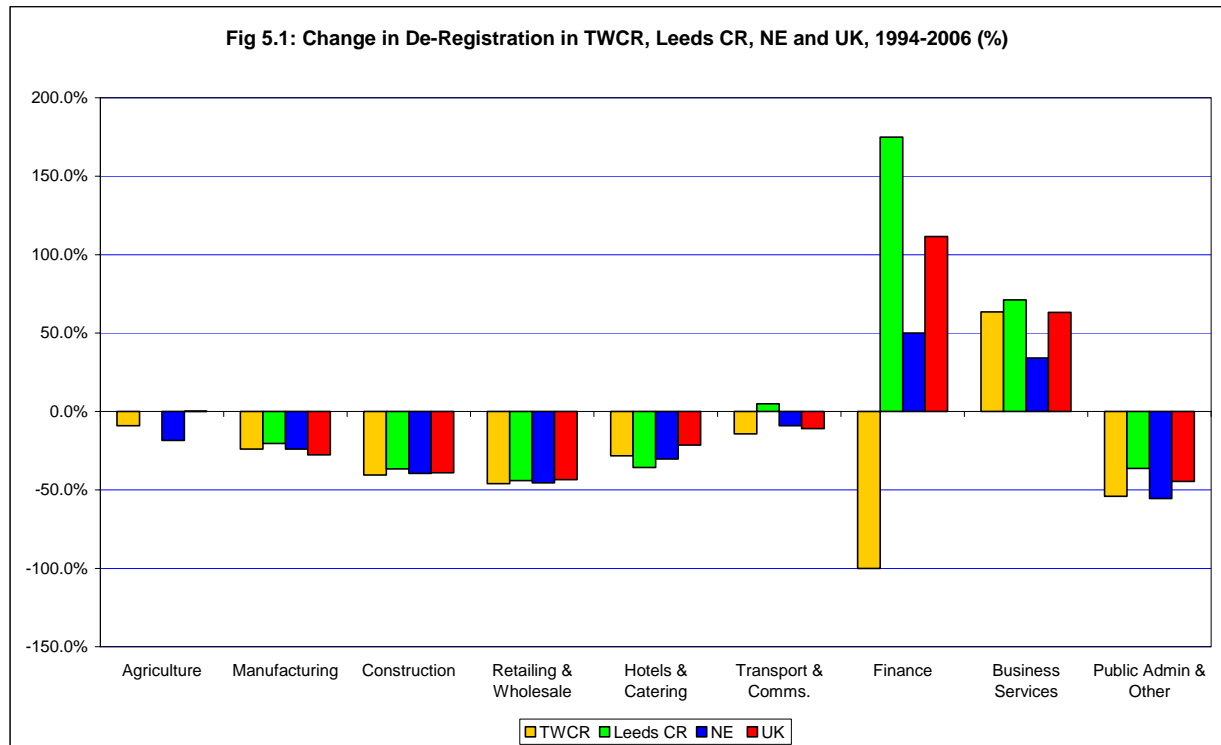
Table 5.2: De-Registration Rate in TWCR, by Industry (% of base at start of year)

SIC 92	Industry	1994	1995	1996	1997	1998	1999	2000	2001	2002	2003	2004	2005	2006	Total (1994-2006)
A,B	Agriculture	2.9	3.2	3.8	3.6	2.8	3.1	2.0	3.1	2.6	2.0	3.7	3.1	2.8	37.2
C,E	Mining & Utilities	0.0	0.0	0.0	0.0	0.0	0.0	0.0	0.0	0.0	0.0	0.0	0.0	0.0	0.0
D	Manufacturing	9.1	8.8	7.4	7.1	7.0	7.9	6.8	7.0	8.4	6.8	6.6	5.9	6.8	96.9
F	Construction	13.6	11.8	10.4	9.5	9.2	8.7	8.2	7.7	7.9	7.1	7.0	7.7	6.9	113.1
G	Retailing & Wholesale	11.5	11.6	10.2	9.7	9.0	9.0	9.4	9.8	8.6	8.9	8.3	7.6	7.0	109.5
H	Hotels & Catering	17.6	16.2	15.0	13.4	13.2	14.5	13.8	15.0	13.5	13.1	13.7	11.0	10.4	190.0
I	Transport & Comms.	10.9	10.7	10.1	10.2	8.2	9.9	10.9	10.9	10.4	11.9	9.7	9.0	7.9	139.5
J	Finance	3.2	19.4	6.7	7.1	0.0	3.7	6.9	3.1	6.3	2.9	2.9	2.8	0.0	67.7
K	Business Services	8.9	9.7	8.3	8.1	8.0	8.4	7.9	8.9	9.3	8.6	8.3	8.4	8.2	153.0
L,O	Public Admin & Other	14.0	14.2	13.3	10.8	10.3	8.6	10.2	7.3	8.7	7.0	7.5	6.0	6.3	127.4
M,N	Education & Health	6.3	15.0	10.5	13.8	6.9	7.1	3.5	10.1	2.2	7.6	3.1	1.0	1.0	87.4
	Total	11.1	11.2	9.9	9.3	8.6	8.9	8.7	9.0	8.8	8.5	8.2	7.6	7.4	120.6

Source: Small Business Service

In Leeds CR, de-registrations fell in six industries between 1994 and 2006 (Table A2.5.1). As in TWCR, the largest numerical fall was in ‘Retailing & Wholesale’ (down 1,125, -44.0%). Large falls also occurred in ‘Construction’ (down 375, -36.6%) and ‘Hotels & Catering’ (down 335, -35.6%).

Rises in Leeds CR de-registrations were led by ‘Business Services’ (up 705, 71.2%). Smaller rises were in ‘Finance’ (up 35, 175.0%), and ‘Transport & Communications’ (up 15, 4.8%). There was no change in ‘Agriculture’.



[Note: ‘Mining & Utilities’ and ‘Education & Health’ are excluded from Figure 5.1 because they are small and had numerically very small changes in registrations]

North East de-registration falls were led, as in TWCR and the UK, by 'Retailing & Wholesale' (down 705, -45.5%). Other large numerical falls were in 'Construction' (down 260, -39.4%), 'Public Admin. & Other' (down 230, -55.4%) and 'Hotels & Catering' (down 215, -30.3%).

North East de-registration rises were biggest in 'Business Services' (up 225, 34.1%). There was a small rise in 'Finance' (up 5, 50.0%). The number of registrations remained the same in 'Mining & Utilities' and 'Education & Health'.

UK de-registrations fell across the majority of industries between 1994 and 2006. As in TWCR, the largest numerical falls were also more than -30%; they were in 'Retailing & Wholesale' (down 22,725 or -43.4%) and 'Construction' (down 9,895, -39.0%). 'Public Admin. & Other Services' had a relatively large fall (down 7,930, -44.6%).

Rises in UK de-registrations 1994-2006 were dominated by 'Business Services' (up 18,420, 63.3%). Smaller numerical rises occurred in 'Finance' (up 775, 111.5%), and 'Education & Health' (up 290, 24.1%).

TYNE & WEAR

In Tyne & Wear, de-registrations fell across most industries between 1994 and 2006 (Table 5.3). As in TWCR, the largest numerical falls were in 'Retailing & Wholesale' (down 305, -46.2%), 'Construction' (down 95, -35.2%), 'Hotels & Catering' (down 95, -30.2%), and 'Public Admin. & Other' (down 85, -51.5%). These Tyne & Wear rates of decline of de-registrations are similar to TWCR, except that the decline (improvement) in construction was 5pp faster in TWCR.

Table 5.3: Business De-Registrations in T&W, 1994-2006

SIC 92	Industry	1994	1995	1996	1997	1998	1999	2000	2001	2002	2003	2004	2005	2006	Total
A,B	Agriculture	20	15	25	15	10	15	10	10	10	10	15	10	15	180
C,E	Mining & Utilities	0	5	0	0	5	0	0	0	5	5	0	0	0	20
D	Manufacturing	170	190	135	140	150	170	140	135	170	135	125	120	130	1,910
F	Construction	270	210	185	185	170	165	150	155	150	145	155	145	175	2,260
G	Retailing & Wholesale	660	640	545	500	480	465	490	495	430	435	400	370	355	6,265
H	Hotels & Catering	315	270	250	225	225	240	235	285	260	265	285	230	220	3,305
I	Transport & Comms.	80	65	85	85	70	90	90	95	90	105	80	70	80	1,085
J	Finance	5	25	10	15	5	10	15	5	10	10	5	5	5	125
K	Business Services	265	285	280	285	275	320	315	375	405	390	385	395	410	4,385
L,O	Public Admin & Other	165	190	160	140	115	105	120	100	100	85	85	75	80	1,520
M,N	Education & Health	15	50	35	40	25	20	15	25	15	25	10	5	10	290
	Total	1,970	1,940	1,710	1,635	1,535	1,600	1,580	1,690	1,645	1,605	1,550	1,430	1,485	21,375

Note: Figures may not tally exactly due to rounding

Registration of 2 or less are recorded as 0

Source: Small Business Service

'Business Services' was the only industry in Tyne & Wear (as in TWCR) where de-registrations rose (up 145, 54.7%) [but this rise in de-registrations is less than the growth of Business Services. The rate of Business Services de-registrations in TWCR fell from 8.9% to 8.2%] (Table 5.2). The number of de-registrations remained the same in 'Mining & Utilities', 'Transport & Communications', and 'Finance'.

5.2 DE- REGISTRATION CHANGES DURING 2006

Between 2005 and 2006, de-registrations fell in TWCR by 25 firms (down 1.1%) (Table 5.4). De-registrations, however, in Leeds CR fell twice as quickly (down 2.3%). In the UK, the fall was slower at 0.3%. Conversely, in NE the de-registrations rose slightly by 0.1%.

In TWCR, de-registrations rose in only two industries. 'Manufacturing' rose 15.2% (25 firms). 'Public Admin. & Other Services' had a small rise of 4.5% (up 5). The largest *fall* in de-registrations was in 'Retailing & Wholesale' (down 35, -5.7%).

In Leeds CR, de-registrations fell in most industries in 2005-06. The largest numerical fall was in 'Hotels & Catering' (down 90, -12.9%). Large falls also occurred in 'Transport & Communications' (down 55, -14.5%) and 'Retailing and Wholesale' (down 40, -3.1%). There was a rise in de-registrations in three industries. 'Public Admin. & Other Services' had the largest rise of 50 (16.1%).

In the North East, de-registrations rose, but by just 0.1% (5 firms). De-registrations in the North East fell in only three industries between 2005-6. The largest numerical fall was in 'Retailing & Wholesale' (down 30, -3.4%). De-registrations remained the same in 'Mining & Utilities', 'Construction', 'Finance' and 'Business Services'. Rises in de-registrations were generally small, with the largest in 'Manufacturing' (up 25, 9.6%) [equal to the rise in TWCR manufacturing de-registrations— meaning all the deterioration in manufacturing de-registrations in 2006 was in TWCR].

Table 5.4: Change in De-Registrations* by Industry:TWCR, Leeds CR, North East and UK, 2006 compared with 2005

SIC 92	Industry	TWCR Change		Leeds CR Change		NE Change		UK Change	
		No.	%	No.	%	No.	%	No.	%
A,B	Agriculture	-5	-9.1	20	16.7	15	15.8	1,375	29.8
C,E	Mining & Utilities	0	0	0	0.0	0	0.0	-5	-2.9
D	Manufacturing	25	15.2	-30	-5.0	25	9.6	-340	-3.1
F	Construction	-15	-5.7	-40	-5.8	0	0.0	525	3.5
G	Retailing & Wholesale	-35	-6.2	-45	-3.1	-30	-3.4	-1,580	-5.1
H	Hotels & Catering	-10	-2.9	-90	-12.9	-25	-4.8	-1,015	-6.8
I	Transport & Comms.	-10	-7.7	-55	-14.5	-20	-9.1	-175	-2.5
J	Finance	-5	-100.0	-5	-8.3	0	0.0	130	9.7
K	Business Services	0	0.0	45	2.7	0	0.0	945	2.0
L,O	Public Admin & Other	5	4.5	50	16.1	5	2.8	-320	-3.1
M,N	Education & Health	0	0.0	-20	-26.7	20	80.0	-5	-0.3
	Total	-25	-1.1	-140	-2.3	5	0.1	-465	-0.3

Note: na - base year zero, percentage change not applicable

All figures are rounded to the nearest 5 (by SBS). Change means a change of 0-2

Source: Small Business Service

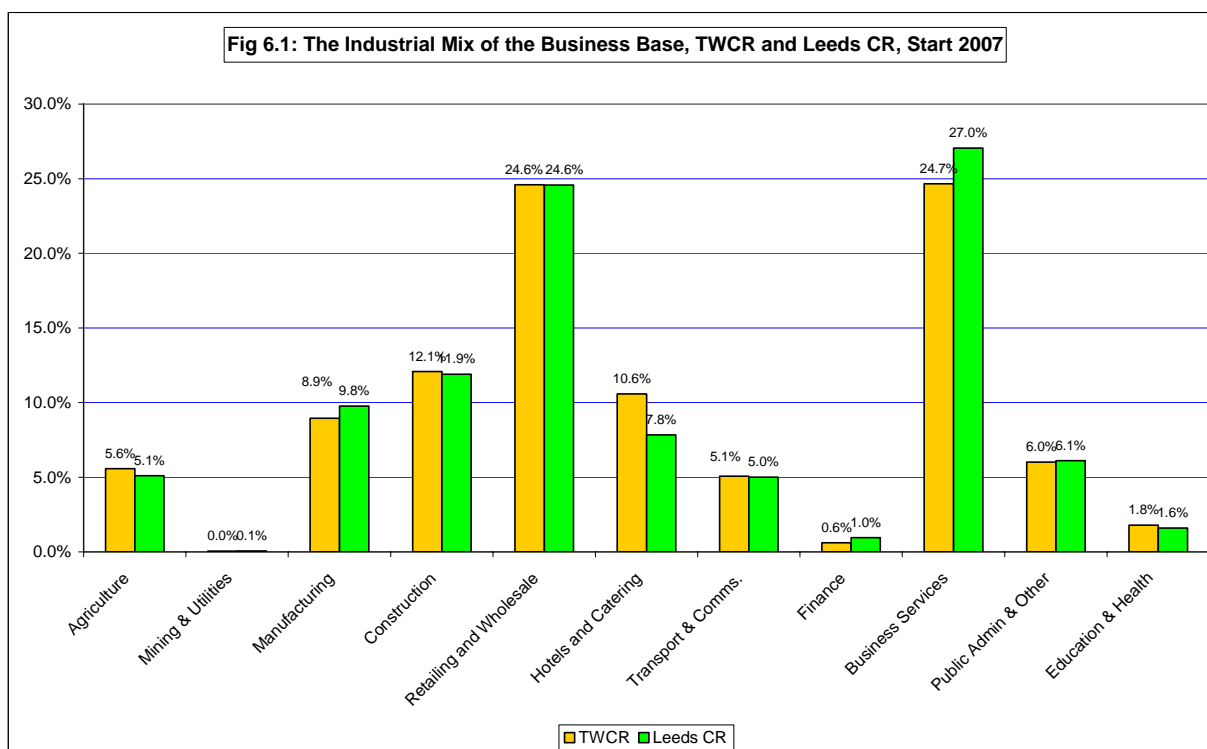
De-registrations in the UK fell by 0.3% (-465) between 2005 and 2006. Like Tyne & Wear, the largest numerical fall in de-registrations was in 'Retailing & Wholesale' (down 1,580, -5.1%). A large fall also occurred in 'Hotels & Catering' (as in Leeds CR) of 1,015 (-6.8%). There was a large rise in de-registrations in 'Agriculture' (up 1,375, 29.8%) [probably linked to financial difficulties in farming, at least before the big rises in cereal prices particularly in 2007].

For an account of Business Deprived Areas (BDAs) see the previous year's report. This summarised some evidence from an IPPR report, 'City Markets'.

6 INDUSTRIAL STRUCTURE OF THE BUSINESS BASE

6.1 THE INDUSTRIAL MIX OF BUSINESSES

Half of TWCR's business base was in its two major industries at the start of 2007; 'Business Services' and 'Retailing & Wholesale' (24.6%) (Fig 6.1). In Leeds CR, these industries also dominate (Fig A2.6.1). TWCR's 'Business Services' are a higher share of all businesses than the North East (23.7%) [by 1pp] but over 2pp less than Leeds CR (27.0%) and 5pp less than the UK (30.4%). Since 2002, TWCR's 'Business Services' sector has grown in size relative to the business base as a whole (Table 6.1).

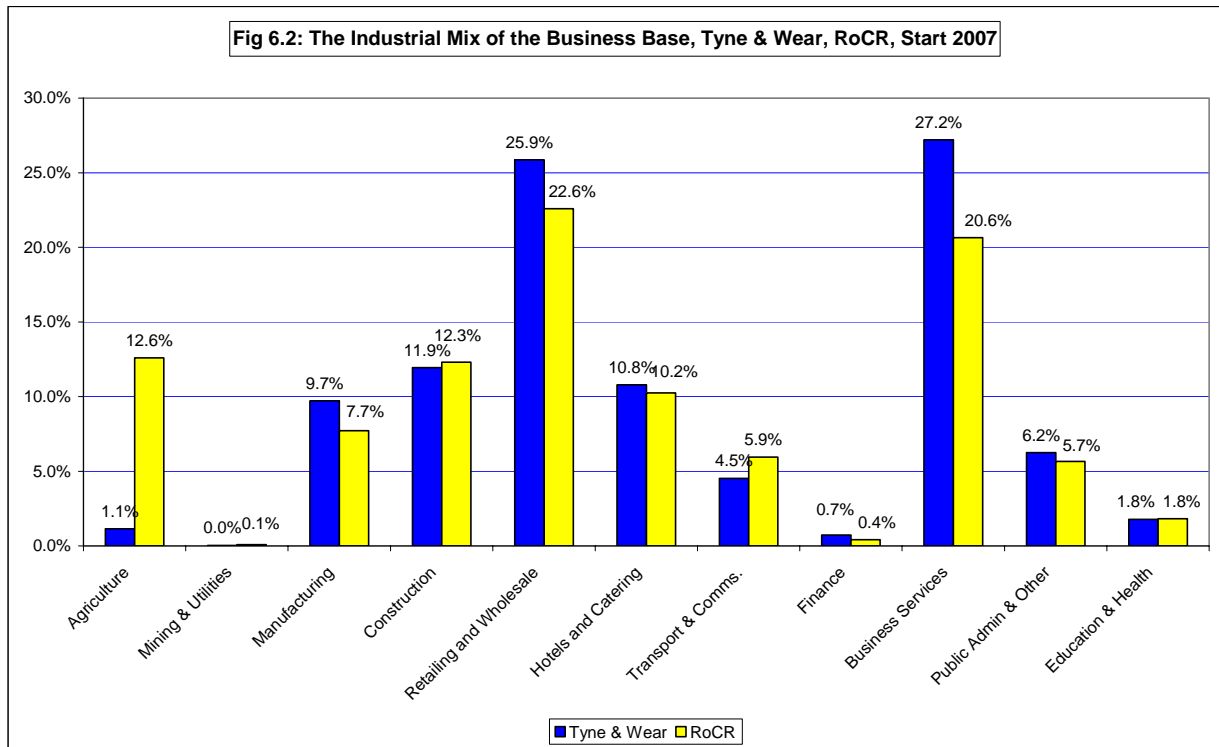


'Retailing & Wholesale' as a proportion of TWCR's industrial mix has been declining since 2002 but did not change in 2006, remaining at 24.6% at the start of 2007. In Leeds CR, 'Retailing & Wholesale' has also been declining and also accounted for 24.6% of the business base at the start of 2007. Both TWCR and Leeds CR are Retail Centres with higher proportions than the North East (24.0%) and especially the UK (20.6%).

Overall, proportions for the 11 industries making up the business base are similar in TWCR and Leeds CR. The main differences are that 'Business Services' is over 2pp higher in Leeds CR. Conversely, 'Hotels & Catering' is nearly 3pp higher (at 10.6%) in TWCR and only 7.8% in Leeds CR. [Perhaps reflecting relatively more pubs and clubs in TWCR.]

Within TWCR, proportions for the 11 industries making up the business base vary between Tyne & Wear and RoCR (Fig 6.2). Proportions are similar for 'Mining & Utilities', 'Construction', 'Hotels & Catering', 'Public Admin. & Other', 'Education & Health' and 'Finance'.

In RoCR, 'Agriculture' is a relatively large industry with 12.6% of the business base, but has only 1.1% in Tyne & Wear. This 'Agricultural effect' thus depresses the RoCR proportions in all other industries by about a tenth. Conversely, Tyne & Wear has a much larger proportion of 'Business Services' (27.2%) than RoCR (20.6%). It also has a higher proportion of firms involved in 'Retailing & Wholesale' (25.9%, compared to 22.6%), and in 'Manufacturing' (9.7%, compared to 7.7%).



6.2 NET CHANGE BY INDUSTRY

6.2.1 CHANGES 2001-2006

Over the five-year period, start 2002–end 2006, every year the overall business stock grew by at least 1.8% in TWCR (Table 6.1). Aggregate growth over the five years was 3,405 (up 12.2% or an average growth of 2.4% p.a.), outperforming the UK (up 7.3%) by 4.9pp over the last five years. Leeds CR also outperformed the UK, but had slower aggregate growth in 2002-6 than TWCR (up 7,480, 10.4%).

Table 6.1: Stock of Business and Annual Change in TWCR, 2002-2006

SIC 92	Industry	2002			2003			2004			2005			2006		
		start	end	% change	start	end	% change	start	end	% change	start	end	% change	start	end	% change
A,B	Agriculture	1,735	1,760	1.4	1,755	1,755	0.0	1,770	1,750	-1.1	1,755	1,755	0.0	1,755	1,730	-1.4
C,E	Mining & Utilities	20	20	0.0	20	20	0.0	20	20	0.0	15	15	0.0	15	15	0.0
D	Manufacturing	2,795	2,790	-0.2	2,800	2,810	0.4	2,810	2,795	-0.5	2,800	2,800	0.0	2,800	2,795	-0.2
F	Construction	3,020	3,115	3.1	3,110	3,290	5.8	3,280	3,445	5.0	3,445	3,625	5.2	3,630	3,795	4.5
G	Retailing & Wholesale	7,285	7,310	0.3	7,325	7,395	1.0	7,385	7,450	0.9	7,440	7,545	1.4	7,540	7,680	1.9
H	Hotels & Catering	2,860	2,955	3.3	2,940	3,030	3.1	3,035	3,090	1.8	3,090	3,170	2.6	3,170	3,310	4.4
I	Transport & Comms.	1,390	1,420	2.2	1,430	1,430	0.0	1,440	1,460	1.4	1,450	1,510	4.1	1,520	1,575	3.6
J	Finance	160	165	3.1	170	170	0.0	175	175	0.0	180	195	8.3	185	190	2.7
K	Business Services	6,300	6,545	3.9	6,545	6,920	5.7	6,920	7,185	3.8	7,180	7,420	3.3	7,420	7,690	3.6
L,O	Public Admin & Other	1,830	1,795	-1.9	1,795	1,805	0.6	1,805	1,825	1.1	1,820	1,845	1.4	1,835	1,870	1.9
M,N	Education & Health	445	460	3.4	460	475	3.3	485	500	3.1	505	515	2.0	525	570	8.6
	Total	27,855	28,365	1.8	28,360	29,110	2.6	29,115	29,700	2.0	29,690	30,420	2.5	30,430	31,260	2.7

Note: % change may not tally with changes in business stock due to rounding of stock.

Source: Small Business Service

TWCR’s five consistent growth industries (i.e. with a rise in their business stock each year) were; ‘Construction’, ‘Retailing & Wholesale’, ‘Hotels & Catering’, ‘Business Services’, and ‘Education & Health’. The other six industries experienced at least one year of either no growth, or a fall in their stock, over the period.

In Leeds CR, the same five industries [as in TWCR] were those with consistent growth.

Between 2002 and 2006 in TWCR, the fastest growth was seen in ‘Construction’ and in ‘Business Services’. Growth was led by ‘Construction’ in 2003, 2004 and 2006 but by ‘Finance’ in 2005. In contrast, Leeds CR growth was dominated by ‘Business Services’. In 4 of the last 5 years Leeds CR’s fastest growing business stock has been ‘Business Services’ (at least 4% growth every year). In Tyne & Wear, ‘Business Services’ growth was over 4% in 3 of the 5 years (2002-2004) (Table 6.2).

Table 6.2: Stock of Business and Annual Change in Tyne & Wear, 2002-2006

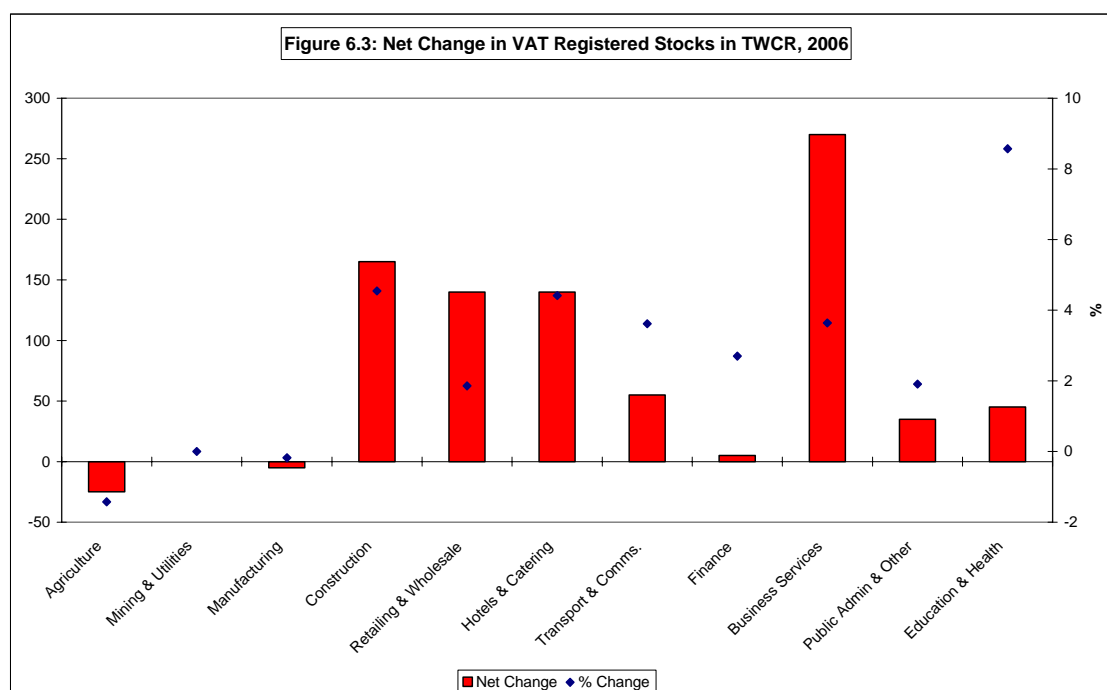
SIC 92	Industry	2002			2003			2004			2005			2006		
		start	end	% change	start	end	% change	start	end	% change	start	end	% change	start	end	% change
A,B	Agriculture	220	225	2.3	220	225	2.3	230	225	-2.2	225	230	2.2	225	220	-2.2
C,E	Mining & Utilities	15	10	-33.3	15	10	-33.3	10	10	0.0	10	10	0.0	10	10	0.0
D	Manufacturing	1,890	1,870	-1.1	1,865	1,880	0.8	1,880	1,855	-1.3	1,855	1,870	0.8	1,870	1,860	-0.5
F	Construction	1,835	1,885	2.7	1,885	1,995	5.8	1,995	2,080	4.3	2,080	2,205	6.0	2,205	2,285	3.6
G	Retailing & Wholesale	4,715	4,740	0.5	4,740	4,775	0.7	4,770	4,815	0.9	4,820	4,870	1.0	4,870	4,950	1.6
H	Hotels & Catering	1,805	1,855	2.8	1,855	1,920	3.5	1,920	1,945	1.3	1,945	1,985	2.1	1,985	2,065	4.0
I	Transport & Comms.	790	825	4.4	825	810	-1.8	805	810	0.6	810	845	4.3	845	865	2.4
J	Finance	115	120	4.3	125	125	0.0	120	120	0.0	125	140	12.0	140	145	3.6
K	Business Services	4,230	4,405	4.1	4,405	4,645	5.4	4,645	4,840	4.2	4,835	5,020	3.8	5,020	5,205	3.7
L,O	Public Admin & Other	1,135	1,120	-1.3	1,120	1,135	1.3	1,135	1,150	1.3	1,150	1,175	2.2	1,175	1,190	1.3
M,N	Education & Health	270	280	3.7	280	290	3.6	290	310	6.9	310	325	4.8	320	335	4.7
	Total	17,020	17,330	1.8	17,330	17,810	2.8	17,805	18,165	2.0	18,165	18,675	2.8	18,675	19,140	2.5

Note: % change may not tally with changes in business stock due to rounding of stock.

Source: Small Business Service

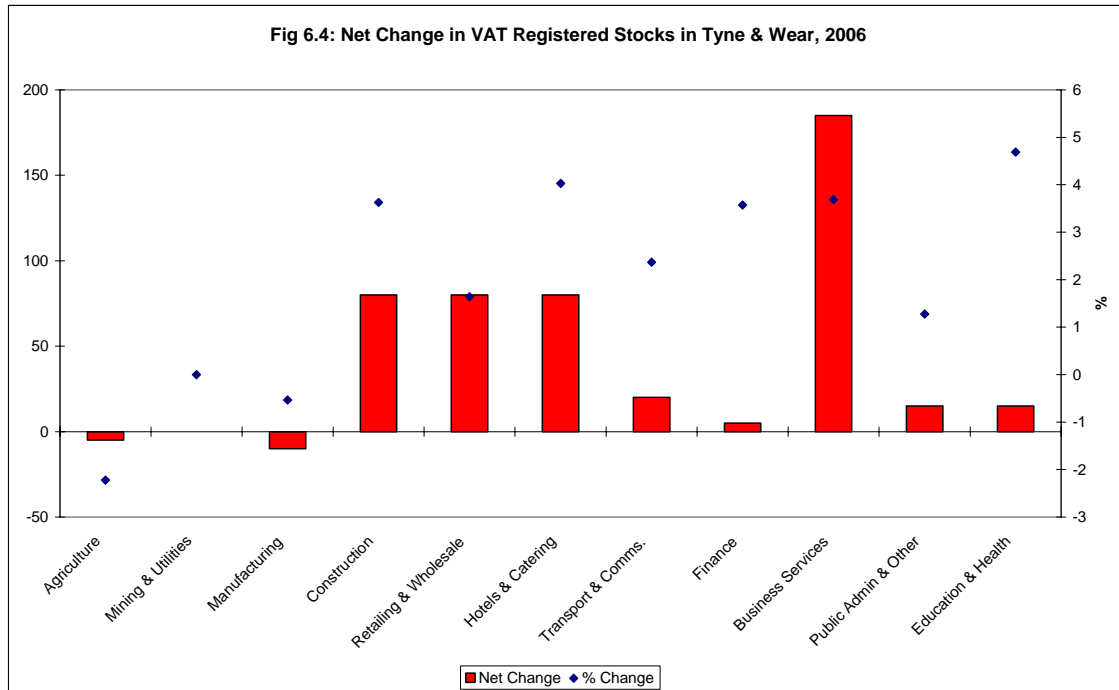
6.2.2 CHANGES IN 2006

The stock of businesses rose strongly overall in TWCR during 2006; up 2.7% [the fastest annual growth recorded since 1994] or 830 (Fig 6.3). The greatest numerical growth in stock was in Business Services (up 270, 3.6%) then ‘Construction’ (up 165, 4.5%). The fastest rise in stock was in ‘Education & Health’, which rose 8.6% (45). Only two industries experienced a fall in stock- ‘Agriculture’ (-25, -1.4%) and ‘Manufacturing’ (-5, -0.2%). ‘Mining & Utilities’ had no change.



Leeds CR’s stock of business grew by 2.3% (1,775) in 2006 (Table A.2.6.1). The greatest numerical growth was in ‘Business Services’ (925, 4.5%). The fastest rise in stock in 2006 was in ‘Education & Health’, which rose 5.5% (up 65). Only three industries experienced a fall in stock- ‘Agriculture’, ‘Manufacturing’ and ‘Public Admin. & Other’. There was no change in ‘Finance’ and ‘Mining & Utilities’.

Tyne & Wear's stock of businesses grew during 2006 by a rapid 2.5% (465) (Fig 6.4). In RoCR, stock rose 3.1% (360). The largest numerical growth in stock in Tyne & Wear and in RoCR was in 'Business Services' (up 185, 3.7% and 85, 3.5% respectively). The fastest growth in stock in 2006 was in 'Education & Health', which rose 4.7% (up 15) in Tyne & Wear and 12.5% (+25) in RoCR. Tyne & Wear also had a loss in 'Manufacturing'. Tyne & Wear and RoCR both saw a loss in 'Agriculture'.



6.2.3 CHANGES BY INDUSTRY AND DISTRICT, 2006

District rises in 2006 were faster than in the previous year (Tables 6.3-6.5). The business base grew in all districts. The greatest acceleration in growth in 2006, compared with 2005, was in Derwentside (up 4.2 percentage points to 6.1% growth).

The fastest growth in the business base in 2006 was Derwentside, up 6.1%, or 100. The largest numerical rise was in North Tyneside, up 140 (4.4%).

Comparison with 2005 (revised figures) shows slower growth in overall (total) stock in 5 of the 13 districts: Gateshead, Newcastle, Sunderland, Tynedale and Wansbeck. The most extreme examples were in Wansbeck (slowing down 1.3 percentage points from 3.1% to 1.8%), and Gateshead (slowing down 1.2 percentage points from 3.3% to 2.1%).

The biggest growth was in 'Business Services' and 'Construction'. Only Easington saw a fall in 'Construction'. 'Business Services' grew in all districts (excluding Chester-le-Street and Wansbeck, where there was no change). The largest numerical rise was for 'Education & Health' in Wansbeck (33.3%, up 5). The fastest growth in Tyne & Wear was also in 'Education & Health' in South Tyneside (20.0%, up 5).

Table 6.3: Net Change in Business Base by Industry for Tyne & Wear districts, 2006

SIC 92	Industry	Gateshead		Newcastle		North Tyneside		South Tyneside		Sunderland	
		Net Change	% Change	Net Change	% Change	Net Change	% Change	Net Change	% Change	Net Change	% Change
A,B	Agriculture	0	0.0	0	0.0	-5	-10.0	0	0.0	-5	-9.1
C,E	Mining & Utilities	0	0.0	0	0.0	0	0.0	0	0.0	0	0.0
D	Manufacture	-5	-1.1	0	0.0	0	0.0	5	2.2	-15	-3.1
F	Construction	10	2.2	15	3.1	25	6.0	15	6.3	20	3.3
G	Retailing & Wholesale	20	2.0	5	0.4	25	3.0	5	0.9	20	1.7
H	Hotels & Catering	5	1.4	25	4.4	30	8.7	10	4.0	15	3.1
I	Transport & Comms.	0	0.0	10	4.8	0	0.0	5	5.6	10	4.9
J	Finance	0	0.0	5	7.7	0	0.0	0	0.0	0	0.0
K	Business Services	45	4.9	50	2.6	55	6.9	10	2.4	25	2.7
L,O	Public Admin & Other	5	2.5	5	1.2	5	2.8	5	4.0	0	0.0
M,N	Education & Health	5	8.3	0	0.0	5	9.1	5	20.0	5	6.7
	Total	80	2.1	115	2.1	140	4.4	60	3.0	75	1.8
	2004 total										

Source: Small Business Service

Table 6.4: Net Change in Business Base by Industry for Durham 4 districts, 2006

SIC 92	Industry	Chester-le-Street		Derwentside		Durham		Easington	
		Net Change	% Change	Net Change	% Change	Net Change	% Change	Net Change	% Change
A,B	Agriculture	0	0.0	0	0.0	0	0.0	0	0.0
C,E	Mining & Utilities	0	0.0	0	0.0	0	0.0	0	0.0
D	Manufacture	0	0.0	5	3.0	-5	-4.8	-5	-3.4
F	Construction	15	12.0	20	8.7	15	7.5	-5	-3.7
G	Retailing & Wholesale	10	4.0	25	6.0	5	1.4	5	1.3
H	Hotels & Catering	5	5.6	10	6.1	0	0.0	15	9.1
I	Transport & Comms.	0	0.0	5	3.7	0	0.0	10	9.1
J	Finance	0	0.0	0	0.0	0	0.0	0	0.0
K	Business Services	0	0.0	25	8.8	5	1.1	5	3.2
L,O	Public Admin & Other	0	0.0	0	0.0	5	5.3	0	0.0
M,N	Education & Health	0	0.0	5	20.0	0	0.0	5	25.0
	Total	35	4.0	100	6.1	30	1.8	35	2.8

Source: Small Business Service

Table 6.5: Net Change in Business Base by Industry for Northumberland 4 districts, 2006

SIC 92	Industry	Blyth Valley		Castle Morpeth		Tynedale		Wansbeck	
		Net Change	% Change	Net Change	% Change	Net Change	% Change	Net Change	% Change
A,B	Agriculture	0	0.0	5	1.6	-15	-1.9	-5	-11.1
C,E	Mining & Utilities	0	0.0	0	0.0	0	0.0	0	0.0
D	Manufacture	5	3.1	0	0.0	5	3.3	5	7.1
F	Construction	10	4.3	10	6.1	5	2.3	10	8.3
G	Retailing & Wholesale	-5	-1.6	10	3.4	15	3.6	0	0.0
H	Hotels & Catering	5	4.0	5	4.3	15	7.0	0	0.0
I	Transport & Comms.	15	23.1	0	0.0	-5	-3.6	5	14.3
J	Finance	0	0.0	0	0.0	0	0.0	0	0.0
K	Business Services	15	6.1	20	5.2	15	2.7	0	0.0
L,O	Public Admin & Other	5	7.7	0	0.0	5	3.3	0	0.0
M,N	Education & Health	0	0.0	5	25.0	5	12.5	5	33.3
	Total	50	3.9	50	3.3	45	1.7	15	1.8

Source: Small Business Service

6.3 INDUSTRIAL NET CHANGES RELATIVE TO THE NORTH EAST, LEEDS CITY REGION AND THE UK

In 2006, TWCR's business base grew by 2.7%. This was faster than Leeds CR (2.3%), the North East (2.4%) and the UK (2.0%) (Table 6.6).

In 2006, 'Business Services' and 'Retailing & Wholesale' formed the biggest proportion of the business base in TWCR, 24.6% each. ('Retail & Wholesale' had the highest proportion in 2005, 25.0%).

'Business Services' held the largest proportion of the business base in Leeds CR (27.0%) and in the UK (30.4%), and the second-largest in the North East (23.7%). Growth in 'Business Services' therefore has a quite significant impact on the overall business base. In TWCR, this industry's base grew by 3.6% in 2006, the same rate as the UK, and slightly faster than the North East (3.5%). Leeds CR's 'Business Services' grew significantly faster at 4.5%.

'Retailing & Wholesale's base rose in all four geographic areas, TWCR fastest (1.9%), followed by the North East (1.8%), Leeds and the UK saw slower rates (1.1% and 1.3% respectively). It held the largest proportion of the business base in the North East (24.0%) in 2006. It held the second-largest proportion in Leeds CR (24.6%), and in the UK (20.6%).

Table 6.6: VAT Registered Businesses by Industry: Tyne & Wear, North East and UK, Year end 2006

SIC 92	Industry	Number at end 2006				% of Total				% Change (during 2006)			
		TWCR	LCR	NE	UK	TWCR	LCR	NE	UK	TWCR	LCR	NE	UK
A,B	Agriculture	1,730	4,040	3,730	146,965	5.5	5.1	7.5	7.5	-1.4	-1.1	-0.9	-1.4
C,E	Mining & Utilities	15	50	60	1,885	0.0	0.1	0.1	0.1	0.0	0.0	9.1	-0.3
D	Manufacturing	2,795	7,755	4,330	153,510	8.9	9.8	8.8	7.8	-0.2	-1.1	-0.1	-0.9
F	Construction	3,795	9,420	6,040	228,770	12.1	11.9	12.2	11.7	4.5	4.4	4.2	3.4
G	Retailing & Wholesale	7,680	19,465	11,860	404,050	24.6	24.6	24.0	20.6	1.9	1.1	1.8	1.3
H	Hotels & Catering	3,310	6,215	5,145	141,730	10.6	7.8	10.4	7.2	4.4	4.1	4.0	3.9
I	Transport & Comms.	1,575	3,955	2,480	85,305	5.0	5.0	5.0	4.4	3.6	3.0	1.8	2.1
J	Finance	190	770	270	20,645	0.6	1.0	0.5	1.1	2.7	0.0	-1.8	0.8
K	Business Services	7,690	21,415	11,715	595,450	24.6	27.0	23.7	30.4	3.6	4.5	3.5	3.6
L,O	Public Admin & Other	1,870	4,850	2,905	147,820	6.0	6.1	5.9	7.6	1.9	-0.4	1.8	0.7
M,N	Education & Health	570	1,255	895	30,440	1.8	1.6	1.8	1.6	8.6	5.5	5.9	4.8
	Total	31,260	79,195	49,435	1,956,750	100.0	100.0	100.0	100.0	2.7	2.3	2.4	2.0

Source: Small Business Service

Four additional industries (other than 'Business Services' and 'Retailing & Wholesale') grew their business base during 2006 in all four areas and in every case growth was fastest in TWCR:

- 'Construction' (up 4.5%, Leeds CR 4.4%, UK 3.4% respectively)
- 'Hotels & Catering' (up 4.4%, 4.1%, and 3.9%)
- 'Transport & Communications' (up 3.6%, 3.0%, and 2.1%)
- 'Education & Health' (up 8.6%, 5.5%, and 4.8%)

Industries whose business stocks fell during 2006 in all four areas were:

- 'Agriculture' (down 1.4%, UK down 1.4%)
- 'Manufacturing' (down 0.2%, UK down 0.9%)

Leeds CR additionally experienced a fall in business stocks in 'Public Admin. & Other Services' (-0.4%). The North East saw a fall in 'Finance' (-1.8%).

6.4 CUMULATIVE INDUSTRIAL CHANGE FROM THE START OF 1994 TO THE END OF 2006

Over the 13-year period to end 2006 TWCR's business base grew 17.1% (4,560 businesses), an annual average of about 1.3% (Table 6.7). TWCR's growth rate was 0.83 of the UK's 20.7%, but faster than both the North East 13.6%, and Leeds CR's 15.6%. Within TWCR, RoCR's business base grew just 1.2pp faster than Tyne & Wear's (17.8% and 16.6% respectively).

Note: Changes over this period give a better indication of the performance of particular industries than single year changes.

Table 6.7: Cumulative Change in Business Numbers from Start 1994 - End 2006, by Industry (%)

SIC 92	Industry	Tyne & Wear		RoCR		TWCR		Leeds CR		NE		UK		Difference (TWCR-UK) (percentage points)
		No.	%	No.	%	No.	%	No.	%	No.	%	No.	%	
A,B	Agriculture	-40	-15.4	-95	-5.9	-140	-7.5	-415	-9.3	-350	-8.6	-17,180	-10.5	3.0
C,E	Mining & Utilities	-10	-50.0	-5	-33.3	-15	-50.0	-30	-37.5	-5	-7.7	130	7.4	-57.4
D	Manufacturing	-60	-3.1	120	14.6	60	2.2	-680	-8.1	55	1.3	-9,565	-5.9	8.1
F	Construction	350	18.1	345	29.9	705	22.8	1,200	14.6	970	19.1	34,615	17.8	5.0
G	Retailing & Wholesale	-580	-10.5	-210	-7.1	-805	-9.5	-2,415	-11.0	-1,290	-9.8	-30,920	-7.1	-2.4
H	Hotels & Catering	410	24.8	280	29.3	700	26.8	865	16.2	1,095	27.0	29,445	26.2	0.6
I	Transport & Comms.	135	18.5	145	25.7	285	22.1	805	25.6	350	16.4	14,915	21.2	0.9
J	Finance	35	31.8	5	11.1	35	22.6	320	71.1	40	17.4	6,195	42.9	-20.3
K	Business Services	2,355	82.6	1,195	92.6	3,550	85.7	10,415	94.7	4,780	68.9	280,610	89.1	-3.4
L,O	Public Admin & Other	60	5.3	20	3.0	80	4.5	420	9.5	100	3.6	19,585	15.3	-10.8
M,N	Education & Health	65	24.1	20	9.8	95	20.0	230	22.4	155	20.9	7,160	30.8	-10.8
	Total	2,725	16.6	1,830	17.8	4,560	17.1	10,715	15.6	5,910	13.6	334,990	20.7	-3.6

Source: Small Business Service

Growth of the business stock in the 13 years to 2006 was led by 'Business Services' in all areas; in TWCR (up 85.7%, 3,550 businesses) within 3.5pp of the UK (89.1%, up 280,610). 'Business Services' grew most rapidly in Leeds CR (94.7%, up 10,415) [Note Leeds CR's numerical growth in Business Services was three times TWCR's], whereas growth was 'slowest' in the North East (68.9%, up 4,780). Within TWCR, 'Business Services' grew 10pp faster in RoCR (at 92.6%) than in Tyne & Wear (82.6%).

'Construction' also experienced a large numerical rise in the business base in TWCR (up 705, 22.8%). TWCR's 'Construction' growth was 5 pp faster than the UK (17.8%). Growth was 1.65 as fast in RoCR (29.9%) as in Tyne & Wear (18.1%). 'Construction' growth was slower in the North East (19.1%). TWCR was 8.2 percentage points faster than Leeds CR (14.6%).

'Hotels & Catering' also rose substantially in TWCR (up 700, 26.8%); [just] 0.6 percentage points faster than the UK (26.2%). The North East's growth rate was 0.2 percentage points faster than TWCR. TWCR's growth rate was 10.6 percentage points faster than Leeds CR (16.2%). In TWCR, 'Hotels & Catering' growth was faster in RoCR (29.3%) than Tyne & Wear (24.8%).

Business numbers fell in all four areas over the 13 years to 2006 in two industries; 'Retailing & Wholesale' and 'Agriculture'. In TWCR, Tyne & Wear, RoCR, Leeds CR and the North East, business numbers in 'Mining & Utilities' also fell. 'Manufacturing' business numbers fell in Leeds CR, Tyne & Wear and the UK.

The largest numerical fall in business stock in the 13 years to 2006 in TWCR was in 'Retailing & Wholesale' (down 805, -9.5%). These rates of decline in Retailing were faster than in the UK (down 30,920, -7.1%). but slower than the North East (down 1,290, -9.8%) and Leeds CR (down 2,415, -11.0%).

'Manufacturing' actually grew in TWCR (up 2.2%); whereas it fell in Leeds CR (down 680 businesses, -8.1%). The UK experienced a slower fall (-5.9%).

COMPARISONS WITH THE UK

Over the 13 years to 2006, TWCR's under-performance compared to the UK was -3.6 percentage points overall. Leeds CR's under-performance was -5.0 percentage points¹¹.

'Manufacturing' in TWCR out-performed the UK (8.1 percentage points). 'Construction' in TWCR also out-performed the UK (5.0 percentage points) with a large gain of 350 firms.

'Finance' under-performed in TWCR compared to the UK (-20.3 percentage points) with the numerical gain in TWCR being low (35 firms). 'Business Services', despite experiencing the largest growth in all TWCR industries, was weak relative to the growth in the UK (-3.4 percentage points).

Comparing Tyne & Wear to the UK, Tyne & Wear's under-performance was -4.1 percentage points. Each industry in Tyne & Wear, except for 'Manufacturing' and 'Construction' under-performed compared to the UK.

Over the 13 years to 2005, TWCR's overall performance was 1.4 percentage points higher than Leeds CR. However, TWCR was under-performing in comparison to LCR in six industries; 'Mining & Utilities', 'Transport & Communications', 'Finance', 'Business Services', 'Public Admin & Other Services', and 'Education & Health'. The largest percentage point difference between TWCR and Leeds CR was in 'Finance' (-48.5 percentage points).

Between 1994-2005, Leeds CR under-performed compared to the UK by -5.0 percentage points overall. Only four Leeds CR industries out-performed compared to the UK ('Agriculture', 'Transport & Communications', 'Finance', and 'Business Services'). The largest percentage point difference between Leeds CR and the UK was in 'Mining & Utilities' (-44.9 percentage points) although Leeds CR had only a small loss in this industry (30 firms). 'Hotels & Catering' also under-performed in Leeds CR compared to the UK (-10.1 percentage points).

'Finance' in Leeds CR out-performed the UK by 28.2 percentage points. Leeds CR's strong 'Business Services' also out-performed the UK (5.6 percentage points).

6.5 CHANGES SINCE 1980

As outlined in §2, only broad comparisons of totals can be made for the period 1980 to 2006, due to the changes in the VAT threshold, industry classification and register (Table 6.8).

6.5.1 1980s

In the 1980s TWCR's business base grew at 0.69 of the rate of the UK. In 1980, a year of recession, TWCR's business base fell 0.3%. During the remainder of 1980s, there was a rise in the business base every year. Overall, between 1981 and 1990, the stock of businesses in Tyne & Wear rose 20.1%, compared to a rise of 29% in the UK.

¹¹ The largest percentage point difference between TWCR and the UK was in 'Mining & Utilities' (-57.4pp) although TWCR's absolute loss in this industry is only 15 firms

Table 6.8: Business Registrations, De-registrations, and Stocks in TWCR, 1980-2006

Year	Stock at		De-registrations	Stock at		TWCR	Leeds CR	UK	Difference (TWCR-UK)
	Start	Registrations		End *	Net Change*	% change	% change	% change	
1980	23,850	2,985	3,050	23,800	-65	-0.3	0.9	1.2	-1.4
1981	23,800	3,035	2,410	24,420	625	2.6	2.2	2.4	0.2
1982	24,420	3,100	2,905	24,605	195	0.8	1.6	1.5	-0.7
1983	24,605	3,445	2,825	25,230	620	2.5	2.8	2.5	0.0
1984	25,230	3,495	3,210	25,515	285	1.1	1.9	2.1	-1.0
1985	25,515	3,320	3,220	25,610	100	0.4	0.0	1.3	-0.9
1986	25,610	3,480	3,305	25,795	175	0.7	0.1	1.7	-1.0
1987	25,795	3,630	3,260	26,160	370	1.4	1.2	2.7	-1.2
1988	26,160	4,230	3,505	26,900	725	2.8	3.4	4.4	-1.6
1989	26,900	4,590	3,525	27,965	1,065	4.0	4.3	4.9	-1.0
1990	27,965	4,120	3,490	28,595	630	2.3	2.3	2.8	-0.6
1991	28,595	3,500	3,540	28,555	-40	-0.1	0.2	-0.3	0.2
1992	27,300	3,105	3,595	26,805	-490	-1.8	-1.9	-2.4	0.6
1993	26,805	3,150	3,580	26,375	-430	-1.6	-0.9	-1.4	-0.2
1980-1993	23,850	49,185	45,420	26,375	3,765	10.6	14.2	20.1	-9.5
1994	26,700	2,815	2,965	26,555	-145	-0.5	-0.8	-0.4	-0.2
1995	26,545	2,650	2,960	26,235	-310	-1.2	-0.9	0.1	-1.2
1996	26,230	2,630	2,585	26,260	30	0.1	0.4	1.0	-0.9
1997	26,265	2,675	2,435	26,510	245	0.9	1.2	2.4	-1.4
1998	26,510	2,655	2,285	26,860	350	1.3	1.7	2.3	-1.0
1999	26,870	2,745	2,385	27,210	340	1.3	1.0	1.8	-0.5
2000	27,220	2,790	2,365	27,650	430	1.6	1.3	1.6	0.0
2001	27,650	2,685	2,475	27,860	210	0.8	0.6	1.1	-0.3
2002	27,855	2,950	2,450	28,365	510	1.8	0.9	1.2	0.6
2003	28,360	3,150	2,420	29,110	750	2.6	2.6	2.0	0.6
2004	29,115	2,960	2,375	29,700	585	2.0	2.1	1.8	0.3
2005	29,690	3,005	2,265	30,420	730	2.5	2.1	2.0	0.4
2006	30,430	3,070	2,240	31,260	830	2.7	2.3	2.0	0.7
1994-2006	26,700	36,780	32,205	31,260	4,555	17.1	15.6	20.7	-3.6

Note: The stock at the end of the year for the period 1980-1993 is simply the stock at start of the following year, except in 1991 and 1993 (when there were significant changes in the VAT threshold). For these two years (and those from 1994 onwards), the stock at the end of the year has been calculated by taking the stock at the beginning of the year, adding on the registrations, and removing the de-registrations.

* Net change has been taken directly from SBS datasets.

Source: Small Business Service

In Leeds CR, the business base grew in every year of the 1980s, with an overall rise in 1981-90 of 22.7% [2.6pp faster than TWCR]. Leeds CR performed better than TWCR in this period, but was under-performing compared to the UK (0.78 of UK).

In 1980, Tyne & Wear's business base fell 0.4%, and 0.1% in RoCR. During the remainder of the 1980s, Tyne & Wear and RoCR saw a rise in the business base each year. Tyne & Wear's business base grew at 17.7% in 1981-90 [0.61 of the UK rate] and RoCR's grew 24.4% [0.84 of the UK rate].

6.5.2 1990s AND EARLY 2000s

During 1991 (another year of severe recession and falling output), the stock of businesses fell -0.1% in TWCR and -0.3% in the UK (Table 6.8). In this year, a sharp rise in the VAT threshold reduced TWCR's stock by a further 1,255 (4.4%) to 27,300. In Leeds CR, the stock of business had a small rise (0.2%) in 1991, but the change in VAT threshold reduced stock by 4.6%.

Within TWCR, Tyne & Wear's stock fell by 0.2% in 1991, with a further reduction of 795 (4.5%) due to the rise in the VAT threshold. RoCR stock did not change in 1991, but fell due to the rise in the VAT threshold by 465 (4.3%) to 10,350.

Recovery of the business stock started in 1995 for the UK and 1996 for TWCR and Leeds CR. Between 1997 and 2006, there has been a slow but steady rise in the business stock every year in TWCR. Growth peaked in 2003 at 2.6% [in both TWCR and Leeds CR], with 2004-6 growth remaining high. In 2006, the TWCR business stock rose 2.7%, 0.7 percentage points above the rise recorded in the UK.

Business stock in Tyne & Wear and in RoCR rose steadily in each year from 1997 to 2006. Growth peaked in 2003 for Tyne & Wear (2.3%) and in 2006 for RoCR (3.1%).

TWCR's business base under-performed the UK most years between 1980 and 2001, however the under-performance more than halved in percentage terms between the first ('1980s') and the second ('1990s') part of the period. Since 2002, TWCR has consistently out-performed the UK in terms of growth of business base. Overall, between 1980 and 1993, TWCR saw 9.5 percentage points less growth than the UK. Between 1994 and 2006, this under-performance had fallen by over three-fifths to just 3.6 percentage points less growth than the UK.

TWCR generally under-performed Leeds CR between 1980 and 1999. However, since 1999 TWCR has consistently out-performed Leeds CR in terms of growth of business base. Between 1980 and 1993, TWCR had 3.6 percentage points less growth than Leeds CR. In the period 1994-2006, TWCR actually saw 1.4 percentage points *more* growth than Leeds CR.

Within TWCR, Tyne & Wear has under-performed compared to RoCR in most years between 1980 and 2001. RoCR however, under-performed TWCR in 2003 and 2005, and saw the same percentage of growth in 2002 and 2004. Overall, between 1980 and 1993, Tyne & Wear had 9.7 percentage points less growth than RoCR. Between 1994 and 2006, Tyne & Wear's under-performance had fallen to just 1.4 percentage points less growth.

APPENDIX 1: BUSINESS REGISTRATIONS AND DE-REGISTRATIONS IN TYNE & WEAR CITY REGION, 1994-2006

Table A1.1: UK Business Registrations, 1994-2006

SIC 92	Industry	1994	1995	1996	1997	1998	1999	2000	2001	2002	2003	2004	2005	2006	Total
A,B	Agriculture	4,435	4,275	4,495	4,605	4,000	3,680	3,480	3,225	4,000	4,055	3,845	3,990	3,895	51,980
C,E	Mining & Utilities	185	165	195	235	165	215	195	190	215	205	185	185	160	2,495
D	Manufacturing	14,155	14,110	14,250	14,140	13,300	12,595	12,340	11,075	10,775	11,085	10,000	9,535	9,270	156,630
F	Construction	15,920	15,260	14,915	19,450	18,140	17,985	17,795	18,360	19,565	22,600	22,225	22,815	22,940	247,970
G	Retailing & Wholesale	39,265	37,095	36,750	36,515	35,940	36,095	35,180	30,980	32,740	37,270	36,625	35,840	34,705	465,000
H	Hotels & Catering	15,705	15,055	15,495	16,380	16,295	17,355	17,830	18,850	19,420	20,980	20,310	19,140	19,180	231,995
I	Transport & Comms.	7,895	8,100	7,905	8,660	8,705	8,920	8,840	8,605	8,570	9,035	9,155	8,845	8,590	111,825
J	Finance	2,195	1,570	1,710	1,985	1,915	2,050	2,120	1,850	1,605	1,680	1,740	1,835	1,635	23,890
K	Business Services	44,400	47,855	53,545	63,435	67,510	62,085	64,685	60,885	63,535	68,660	66,765	67,055	68,060	798,475
L,O	Public Admin & Other	19,560	16,440	14,760	15,095	14,090	13,660	14,205	13,780	14,040	13,040	10,690	10,175	10,880	180,415
M,N	Education & Health	3,155	1,830	2,030	2,185	2,135	2,265	2,230	2,210	2,455	2,615	2,250	2,315	2,895	30,570
	Total	166,870	161,750	166,050	182,680	182,205	176,915	178,905	170,015	176,920	191,220	183,780	181,735	182,205	2,301,250

Note: Figures may not tally exactly due to rounding

Registration of 2 or less are recorded as 0

Source: Small Business Service

Table A1.2: UK Business De-Registrations, 1994-2006

SIC 92	Industry	1994	1995	1996	1997	1998	1999	2000	2001	2002	2003	2004	2005	2006	Total
A,B	Agriculture	5,980	5,680	5,740	5,575	5,690	5,595	5,595	4,780	4,080	5,015	4,835	4,610	5,985	69,160
C,E	Mining & Utilities	200	145	185	170	175	185	180	205	210	190	190	170	165	2,370
D	Manufacturing	14,790	13,735	13,130	12,705	13,530	13,385	12,720	12,650	13,140	12,595	12,075	11,045	10,705	166,205
F	Construction	25,395	19,855	17,495	16,550	14,985	15,315	14,200	14,035	14,620	15,120	15,315	14,975	15,500	213,360
G	Retailing & Wholesale	52,355	47,960	42,715	39,950	39,095	38,525	37,345	35,335	34,615	34,045	33,140	31,210	29,630	495,920
H	Hotels & Catering	17,725	16,770	15,385	15,020	14,925	15,110	14,700	15,370	16,065	16,335	16,295	14,930	13,915	202,545
I	Transport & Comms.	7,640	7,665	7,500	7,370	7,375	7,695	7,765	7,650	7,655	7,670	7,135	6,985	6,810	96,915
J	Finance	695	1,435	1,595	1,185	1,310	1,395	1,465	1,485	1,540	1,365	1,420	1,340	1,470	17,700
K	Business Services	29,120	28,365	29,265	30,660	32,425	36,540	43,970	46,510	49,855	48,775	48,250	46,595	47,540	517,870
L,O	Public Admin & Other	17,785	16,100	13,900	12,400	12,185	11,520	11,790	11,030	11,335	11,555	11,195	10,175	9,855	160,825
M,N	Education & Health	1,205	2,845	2,670	2,660	1,715	1,545	1,510	1,480	1,680	1,645	1,470	1,500	1,495	23,420
	Total	172,890	160,550	149,580	144,240	143,405	146,815	151,245	150,530	154,785	154,305	151,310	143,535	143,070	1,966,260

Note: Figures may not tally exactly due to rounding

Registration of 2 or less are recorded as 0

Source: Small Business Service

Table A1.3: North East Business Registrations, 1994-2006

SIC 92	Industry	1994	1995	1996	1997	1998	1999	2000	2001	2002	2003	2004	2005	2006	Total
A,B	Agriculture	100	85	80	65	95	80	80	70	115	90	90	120	75	1,145
C,E	Mining & Utilities	5	5	5	5	5	10	5	5	5	5	0	5	10	70
D	Manufacturing	345	345	360	325	350	330	305	310	315	310	260	285	280	4,120
F	Construction	400	365	405	435	430	435	430	465	475	645	640	675	650	6,450
G	Retailing & Wholesale	1,135	985	1,005	950	905	1,010	915	890	1,005	1,095	1,020	1,025	1,055	12,995
H	Hotels & Catering	625	605	585	590	560	675	725	755	705	745	725	665	695	8,655
I	Transport & Comms.	230	250	225	215	235	245	235	235	280	280	215	305	245	3,195
J	Finance	45	15	10	25	15	25	25	25	30	25	15	30	15	300
K	Business Services	845	905	1,005	1,035	1,170	1,090	1,220	1,140	1,200	1,400	1,225	1,280	1,280	14,795
L,O	Public Admin & Other	550	400	280	365	300	240	270	215	190	230	225	215	235	3,715
M,N	Education & Health	130	55	55	50	50	45	60	70	70	80	50	60	95	870
	Total	4,415	4,020	4,020	4,060	4,105	4,185	4,275	4,180	4,390	4,900	4,460	4,665	4,630	56,305

Note: Figures may not tally exactly due to rounding

Registration of 2 or less are recorded as 0

Source: Small Business Service

Table A1.4: North East Business De-Registrations, 1994-2006

SIC 92	Industry	1994	1995	1996	1997	1998	1999	2000	2001	2002	2003	2004	2005	2006	Total
A,B	Agriculture	135	125	155	110	120	130	100	130	95	85	100	95	110	1,490
C,E	Mining & Utilities	5	10	10	5	5	5	5	5	5	5	5	5	5	75
D	Manufacturing	375	380	295	305	310	325	280	310	355	305	275	260	285	4,060
F	Construction	660	530	475	420	410	365	350	385	365	355	355	400	400	5,470
G	Retailing & Wholesale	1,550	1,475	1,250	1,150	1,080	1,045	1,030	1,075	980	980	945	875	845	14,280
H	Hotels & Catering	710	665	570	540	525	555	550	635	580	595	625	520	495	7,565
I	Transport & Comms.	220	220	215	215	185	220	230	235	220	265	200	220	200	2,845
J	Finance	10	60	30	20	10	15	20	10	25	20	10	15	15	260
K	Business Services	660	655	620	625	655	710	750	935	915	885	845	885	885	10,025
L,O	Public Admin & Other	415	430	370	305	300	260	275	225	240	220	215	180	185	3,620
M,N	Education & Health	45	130	75	110	55	40	30	50	35	45	30	25	45	715
	Total	4,790	4,675	4,065	3,795	3,655	3,675	3,620	3,995	3,810	3,760	3,610	3,470	3,475	50,395

Note: Figures may not tally exactly due to rounding

Registration of 2 or less are recorded as 0

Source: Small Business Service

DISTRICT REGISTRATIONS AND DE-REGISTRATIONS

1994-2006

Between 1994 and 2006, numbers of businesses newly registered for VAT fell in four of the thirteen districts of TWCR. The largest numerical fall was in Newcastle (down 40 firms or -6.7%). A smaller but faster fall occurred in South Tyneside (-20, -8.7%). Small falls also occurred in Easington (-5, -4.2%) and Gateshead (down 5, -1.4%). The largest rise in registrations was in North Tyneside (up 115, 41.8%). [North Tyneside's big rise in new registrations partly reflects developments in the A19 corridor.] North Tyneside was the only Tyne & Wear district to see a rise in registrations- Sunderland saw no change. A large rise was also seen in Derwentside (up 75, 65.2%).

De-registrations fell (improved) in all TWCR districts. The largest numerical fall took place in Newcastle, where de-registrations fell by 125 (-22.1%). These falls can be largely attributed to falls in de-registrations in 'Retailing & Wholesale'. The largest numerical fall in 'Retailing' de-registrations was in Newcastle (down 100 firms, -27.4%). The fastest fall occurred in Derwentside (-45.5%, -75). Fast falls were also seen in Easington (-40.7%, -55) and in South Tyneside (-34.8%, -80).

2005-2006

Between 2005 and 2006, numbers of businesses newly registered for VAT fell in just four of the thirteen TWCR districts; Gateshead (down 40, -10.4%), Newcastle (-40, -6.7%), Tynedale (-35, -15.6%) and Durham (-15, -8.6%). The largest rise in registrations were in North Tyneside (up 45, 13%) and in Derwentside (40, 26.7%).

De-registrations fell (improved) in most of the TWCR districts. The largest numerical fall was seen in Derwentside (down 25, -27.8%). Disturbingly, de-registrations rose in four districts [including three in Tyne & Wear]; Sunderland (up [a big] 50, 13.3%), Wansbeck (10, 15.4%), South Tyneside (5, 3.3%) and Newcastle (5, 1.1%).

Table A1.5: Gateshead Business Registrations, 1994-2006

SIC 92	Industry	1994	1995	1996	1997	1998	1999	2000	2001	2002	2003	2004	2005	2006	Total
A,B	Agriculture	0	0	0	0	5	0	0	0	5	0	0	5	5	20
C,E	Mining & Utilities	0	0	0	0	0	0	0	0	0	0	0	0	0	0
D	Manufacturing	40	30	40	35	30	30	25	25	35	35	20	35	20	400
F	Construction	30	30	35	40	25	40	35	35	30	50	55	45	45	495
G	Retailing & Wholesale	95	90	85	70	80	75	80	80	95	95	100	95	80	1,120
H	Hotels & Catering	45	40	45	50	40	40	50	65	75	55	65	45	45	660
I	Transport & Comms.	15	20	15	15	20	10	15	25	30	20	20	25	20	250
J	Finance	5	5	0	5	0	0	0	0	5	0	0	0	0	20
K	Business Services	70	70	65	75	80	85	105	90	115	150	125	115	115	1,260
L,O	Public Admin & Other	35	30	25	25	25	20	15	15	10	15	15	15	20	265
M,N	Education & Health	15	5	5	0	5	5	5	5	5	10	5	0	5	70
	Total	350	320	320	315	305	310	335	350	405	430	405	385	345	4,575

Note: Figures may not tally exactly due to rounding

Registration of 2 or less are recorded as 0

Source: Small Business Service

Table A1.6: Gateshead Business De-Registrations, 1994-2006

SIC 92	Industry	1994	1995	1996	1997	1998	1999	2000	2001	2002	2003	2004	2005	2006	Total
A,B	Agriculture	5	5	5	0	0	0	0	0	0	5	5	0	0	25
C,E	Mining & Utilities	0	0	0	0	0	0	0	0	0	0	0	0	0	0
D	Manufacturing	30	40	25	30	30	25	25	15	30	25	25	25	20	345
F	Construction	55	40	45	25	25	30	25	20	30	30	25	30	35	415
G	Retailing & Wholesale	135	125	105	105	85	85	80	85	85	70	70	70	60	1,160
H	Hotels & Catering	50	40	30	40	45	45	40	50	50	55	50	45	40	580
I	Transport & Comms.	20	20	15	15	15	25	10	15	15	20	15	10	20	215
J	Finance	0	5	5	0	0	0	5	0	5	0	5	0	0	25
K	Business Services	35	35	35	35	40	40	35	55	75	85	95	70	70	705
L,O	Public Admin & Other	35	35	35	25	25	15	20	10	20	5	15	10	15	265
M,N	Education & Health	0	10	5	10	5	0	0	5	0	5	0	0	0	40
	Total	365	355	305	285	270	275	245	265	310	295	305	265	265	3,805

Note: Figures may not tally exactly due to rounding

Registration of 2 or less are recorded as 0

Source: Small Business Service

Table A1.7: Newcastle Business Registrations, 1994-2006

SIC 92	Industry	1994	1995	1996	1997	1998	1999	2000	2001	2002	2003	2004	2005	2006	Total
A,B	Agriculture	5	5	5	0	5	0	5	0	5	5	5	0	0	40
C,E	Mining & Utilities	0	0	0	0	0	0	0	0	0	0	0	0	0	0
D	Manufacturing	45	60	60	40	35	35	40	30	30	30	15	25	30	475
F	Construction	45	50	45	50	40	50	45	45	40	50	40	60	55	615
G	Retailing & Wholesale	130	115	135	140	110	125	105	110	110	130	120	110	110	1,550
H	Hotels & Catering	80	85	65	90	70	90	90	90	70	90	85	95	90	1,090
I	Transport & Comms.	25	30	15	25	25	20	25	20	30	20	20	25	25	305
J	Finance	10	5	0	0	0	5	5	5	10	5	5	10	5	65
K	Business Services	170	155	170	160	170	175	190	180	200	210	215	215	200	2,410
L,O	Public Admin & Other	70	80	40	55	45	30	40	35	40	40	40	40	30	585
M,N	Education & Health	20	15	10	10	5	5	10	5	5	10	10	5	5	115
	Total	595	595	550	575	505	535	555	520	545	585	555	595	555	7,265

Note: Figures may not tally exactly due to rounding

Registration of 2 or less are recorded as 0

Source: Small Business Service

Table A1.8: Newcastle Business De-Registrations, 1994-2006

SIC 92	Industry	1994	1995	1996	1997	1998	1999	2000	2001	2002	2003	2004	2005	2006	Total
A,B	Agriculture	5	5	5	5	5	5	5	5	0	0	5	5	5	55
C,E	Mining & Utilities	0	0	0	0	0	0	0	0	0	0	0	0	0	0
D	Manufacturing	45	50	40	50	50	65	55	50	55	45	35	30	30	600
F	Construction	60	55	40	60	80	55	45	50	45	35	40	30	40	635
G	Retailing & Wholesale	195	180	145	150	140	110	145	155	120	135	115	105	105	1,800
H	Hotels & Catering	100	75	70	75	60	80	65	90	65	85	80	65	65	975
I	Transport & Comms.	15	20	25	30	25	25	30	25	25	30	20	15	15	300
J	Finance	0	10	5	10	0	0	5	5	5	5	0	5	0	50
K	Business Services	85	120	100	110	110	130	125	135	125	120	110	140	150	1,560
L,O	Public Admin & Other	50	55	50	50	35	40	45	40	40	40	30	30	25	530
M,N	Education & Health	5	15	5	15	10	5	5	10	5	5	5	0	5	90
	Total	565	585	500	560	525	520	515	560	490	505	445	435	440	6,645

Note: Figures may not tally exactly due to rounding

Registration of 2 or less are recorded as 0

Source: Small Business Service

Table A1.9: North Tyneside Business Registrations, 1994-2006

SIC 92	Industry	1994	1995	1996	1997	1998	1999	2000	2001	2002	2003	2004	2005	2006	Total
A,B	Agriculture	5	0	0	0	5	0	5	0	5	5	0	5	0	30
C,E	Mining & Utilities	0	0	0	0	0	0	0	0	0	0	0	0	0	0
D	Manufacturing	15	20	20	30	15	30	25	25	25	35	20	25	25	310
F	Construction	20	25	25	35	35	25	30	30	50	55	40	65	55	490
G	Retailing & Wholesale	70	60	80	65	65	80	65	60	80	80	65	85	80	935
H	Hotels & Catering	45	40	40	35	30	55	65	55	65	60	65	35	60	650
I	Transport & Comms.	15	15	15	10	15	20	20	20	15	15	20	15	15	210
J	Finance	5	0	0	5	0	0	0	0	0	0	0	0	0	10
K	Business Services	60	80	75	75	90	90	95	80	80	95	90	95	120	1,125
L,O	Public Admin & Other	35	20	25	25	25	20	20	5	15	15	20	10	15	250
M,N	Education & Health	5	5	0	5	10	5	5	5	5	5	5	5	5	65
	Total	275	270	275	285	285	330	320	280	340	370	320	345	390	4,085

Note: Figures may not tally exactly due to rounding

Registration of 2 or less are recorded as 0

Source: Small Business Service

Table A1.10: North Tyneside Business De-Registrations, 1994-2006

SIC 92	Industry	1994	1995	1996	1997	1998	1999	2000	2001	2002	2003	2004	2005	2006	Total
A,B	Agriculture	5	5	5	5	0	0	0	0	5	0	5	0	5	35
C,E	Mining & Utilities	0	0	0	0	0	0	0	0	0	0	0	0	0	0
D	Manufacturing	25	30	25	15	25	20	25	20	20	20	20	20	25	290
F	Construction	50	35	30	40	25	20	25	20	25	35	30	35	35	405
G	Retailing & Wholesale	110	115	90	90	75	90	95	75	50	80	65	60	55	1,050
H	Hotels & Catering	40	55	45	25	40	30	35	50	60	40	55	45	35	555
I	Transport & Comms.	15	10	15	10	5	10	15	15	10	20	10	10	15	160
J	Finance	0	0	0	0	0	0	0	0	0	0	0	0	0	0
K	Business Services	50	55	55	55	40	55	40	70	70	75	65	70	65	765
L,O	Public Admin & Other	30	35	25	20	30	15	15	15	10	20	20	15	15	265
M,N	Education & Health	0	5	10	5	5	5	10	5	5	5	0	0	0	55
	Total	335	350	305	270	245	245	260	265	255	300	275	260	250	3,615

Note: Figures may not tally exactly due to rounding

Registration of 2 or less are recorded as 0

Source: Small Business Service

Table A1.11: South Tyneside Business Registrations, 1994-2006

SIC 92	Industry	1994	1995	1996	1997	1998	1999	2000	2001	2002	2003	2004	2005	2006	Total
A,B	Agriculture	0	0	0	0	0	0	0	0	0	0	0	0	0	0
C,E	Mining & Utilities	0	0	0	0	0	0	0	0	0	0	0	0	0	0
D	Manufacturing	20	15	20	15	15	20	15	10	15	15	15	15	20	210
F	Construction	15	10	20	20	20	15	20	25	25	25	30	35	30	290
G	Retailing & Wholesale	80	50	50	55	45	55	35	40	60	55	55	40	50	670
H	Hotels & Catering	35	30	30	30	40	40	35	45	25	50	30	30	35	455
I	Transport & Comms.	10	5	5	5	5	10	10	15	10	10	10	10	10	115
J	Finance	0	0	0	0	0	0	0	0	0	0	0	0	0	0
K	Business Services	35	40	35	45	45	45	40	50	65	55	40	55	50	600
L,O	Public Admin & Other	25	15	5	20	15	10	15	5	5	15	5	5	10	150
M,N	Education & Health	5	0	5	5	0	0	0	0	5	5	0	0	5	30
	Total	230	160	170	190	185	195	175	185	205	235	195	195	210	2,530

Note: Figures may not tally exactly due to rounding

Registration of 2 or less are recorded as 0

Source: Small Business Service

Table A1.12: South Tyneside Business De-Registrations, 1994-2006

SIC 92	Industry	1994	1995	1996	1997	1998	1999	2000	2001	2002	2003	2004	2005	2006	Total
A,B	Agriculture	5	0	0	0	0	5	0	0	0	0	0	0	0	10
C,E	Mining & Utilities	0	0	0	0	0	0	0	0	0	0	0	0	0	0
D	Manufacturing	20	25	20	15	10	15	10	15	25	15	10	10	15	205
F	Construction	30	15	20	20	15	20	15	15	20	20	10	15	15	230
G	Retailing & Wholesale	75	70	65	55	55	45	55	50	55	60	50	40	40	715
H	Hotels & Catering	35	30	40	30	20	30	40	25	30	30	30	25	30	395
I	Transport & Comms.	15	5	10	10	0	5	10	10	10	5	10	15	5	110
J	Finance	0	5	0	0	0	0	0	0	0	0	0	0	0	5
K	Business Services	30	20	40	20	25	25	30	35	40	40	30	35	40	410
L,O	Public Admin & Other	15	15	15	10	5	5	15	10	10	5	5	5	5	120
M,N	Education & Health	5	5	5	5	0	0	0	0	0	5	0	0	0	25
	Total	230	185	210	165	135	150	180	165	190	180	150	145	150	2,235

Note: Figures may not tally exactly due to rounding

Registration of 2 or less are recorded as 0

Source: Small Business Service

Table A1.13: Sunderland Business Registrations, 1994-2006

SIC 92	Industry	1994	1995	1996	1997	1998	1999	2000	2001	2002	2003	2004	2005	2006	Total
A,B	Agriculture	0	0	0	5	5	0	0	0	5	5	5	0	0	25
C,E	Mining & Utilities	0	0	0	0	0	0	0	0	0	0	0	0	0	0
D	Manufacturing	30	35	45	35	45	40	30	40	45	35	30	35	25	470
F	Construction	45	45	50	45	45	55	45	45	55	80	75	60	70	715
G	Retailing & Wholesale	125	105	110	105	100	115	90	110	105	105	105	90	115	1,380
H	Hotels & Catering	70	70	60	65	70	60	70	75	80	75	70	65	70	900
I	Transport & Comms.	25	25	25	25	30	25	20	25	35	25	15	35	35	345
J	Finance	5	0	5	5	0	5	0	0	0	0	0	5	0	25
K	Business Services	80	75	105	105	110	110	105	105	115	120	105	100	105	1,340
L,O	Public Admin & Other	55	40	30	30	30	20	25	15	15	20	20	25	20	345
M,N	Education & Health	15	5	5	5	5	5	5	10	5	5	10	5	5	85
	Total	450	405	435	420	440	435	395	425	460	465	435	425	450	5,640

Note: Figures may not tally exactly due to rounding

Registration of 2 or less are recorded as 0

Source: Small Business Service

Table A1.14: Sunderland Business De-Registrations, 1994-2006

SIC 92	Industry	1994	1995	1996	1997	1998	1999	2000	2001	2002	2003	2004	2005	2006	Total
A,B	Agriculture	0	0	5	0	0	0	0	5	5	0	5	5	5	30
C,E	Mining & Utilities	0	0	0	0	0	0	0	0	0	0	0	0	0	0
D	Manufacturing	50	45	25	35	35	45	30	35	45	30	35	30	40	480
F	Construction	80	65	50	40	30	40	40	50	35	30	50	40	50	600
G	Retailing & Wholesale	140	155	140	100	125	135	115	130	115	95	100	90	90	1,530
H	Hotels & Catering	85	70	60	55	55	55	55	75	55	55	65	50	55	790
I	Transport & Comms.	15	15	20	20	20	20	25	30	25	25	20	20	25	280
J	Finance	5	5	0	0	0	5	0	0	0	0	0	0	0	15
K	Business Services	65	55	45	65	60	65	80	85	95	75	85	75	80	930
L,O	Public Admin & Other	35	50	35	35	20	25	25	20	20	15	15	10	20	325
M,N	Education & Health	5	10	10	5	5	10	0	5	0	5	5	0	0	60
	Total	475	460	390	355	355	405	380	435	395	330	375	325	375	5,055

Note: Figures may not tally exactly due to rounding

Registration of 2 or less are recorded as 0

Source: Small Business Service

Table A1.15: Durham 4 Business Registrations, 1994-2006

SIC 92	Industry	1994	1995	1996	1997	1998	1999	2000	2001	2002	2003	2004	2005	2006	Total
A,B	Agriculture	15	5	5	0	5	15	5	10	10	5	5	5	5	90
C,E	Mining & Utilities	0	0	0	0	0	0	0	0	0	0	0	0	0	0
D	Manufacturing	30	30	35	30	30	15	30	35	40	25	35	15	30	380
F	Construction	45	35	50	55	45	60	65	60	60	70	75	90	75	785
G	Retailing & Wholesale	120	90	115	100	110	105	100	110	115	135	125	110	130	1,465
H	Hotels & Catering	75	65	75	70	70	90	90	70	75	85	90	80	85	1,020
I	Transport & Comms.	30	45	40	30	35	35	40	40	40	45	45	55	35	515
J	Finance	5	0	0	5	0	0	0	0	0	0	0	0	0	10
K	Business Services	50	85	85	100	135	100	130	110	115	145	130	120	145	1,450
L,O	Public Admin & Other	55	35	25	40	30	30	20	30	20	10	25	15	20	355
M,N	Education & Health	10	10	5	5	0	5	10	0	5	5	0	10	15	80
	Total	440	420	440	445	470	465	500	475	490	530	545	525	565	6,310

Note: Figures may not tally exactly due to rounding

Registration of 2 or less are recorded as 0

Source: Small Business Service

Table A1.16: Durham 4 Business De-Registrations, 1994-2006

SIC 92	Industry	1994	1995	1996	1997	1998	1999	2000	2001	2002	2003	2004	2005	2006	Total
A,B	Agriculture	15	10	15	20	15	10	5	10	15	0	20	20	0	155
C,E	Mining & Utilities	0	0	0	0	0	0	0	0	0	0	0	0	0	0
D	Manufacturing	45	20	35	25	20	25	20	25	30	25	35	25	35	365
F	Construction	75	60	55	40	40	40	45	40	40	40	40	65	35	615
G	Retailing & Wholesale	185	160	130	130	110	115	120	130	95	105	110	100	85	1,575
H	Hotels & Catering	75	90	75	65	75	70	70	70	65	60	75	65	60	915
I	Transport & Comms.	30	40	30	30	30	25	35	35	35	40	40	40	20	430
J	Finance	0	5	0	0	0	0	0	0	0	0	0	0	0	5
K	Business Services	45	60	45	45	60	55	60	70	75	80	85	110	100	890
L,O	Public Admin & Other	45	45	45	20	40	25	25	25	30	20	20	15	15	370
M,N	Education & Health	5	15	5	10	5	5	0	10	0	5	5	5	0	70
	Total	530	520	430	400	385	375	390	390	380	400	410	435	365	5,410

Note: Figures may not tally exactly due to rounding

Registration of 2 or less are recorded as 0

Source: Small Business Service

Table A1.17: Chester-le-Street Business Registrations, 1994-2006

SIC 92	Industry	1994	1995	1996	1997	1998	1999	2000	2001	2002	2003	2004	2005	2006	Total
A,B	Agriculture	0	0	0	0	0	0	0	0	0	0	0	0	0	0
C,E	Mining & Utilities	0	0	0	0	0	0	0	0	0	0	0	0	0	0
D	Manufacturing	5	5	5	5	10	5	0	5	5	0	0	0	5	50
F	Construction	10	5	10	15	10	5	10	15	15	15	20	10	15	155
G	Retailing & Wholesale	20	20	25	25	25	25	25	20	15	20	25	20	30	295
H	Hotels & Catering	15	5	10	10	15	15	10	15	15	15	10	10	15	160
I	Transport & Comms.	10	15	5	5	10	10	5	5	15	5	5	5	0	95
J	Finance	0	0	0	0	0	0	0	0	0	0	0	0	0	0
K	Business Services	10	20	15	20	25	15	30	20	15	20	20	25	20	255
L,O	Public Admin & Other	15	5	10	10	5	5	5	10	5	0	5	0	0	75
M,N	Education & Health	5	5	0	0	0	0	0	0	0	0	0	5	0	15
	Total	90	80	85	95	100	75	90	90	85	75	95	85	100	1,145

Note: Figures may not tally exactly due to rounding

Registration of 2 or less are recorded as 0

Source: Small Business Service

Table A1.18: Chester-le-Street Business De-Registrations, 1994-2006

SIC 92	Industry	1994	1995	1996	1997	1998	1999	2000	2001	2002	2003	2004	2005	2006	Total
A,B	Agriculture	0	5	0	0	0	0	0	0	0	0	5	5	0	15
C,E	Mining & Utilities	0	0	0	0	0	0	0	0	0	0	0	0	0	0
D	Manufacturing	10	0	5	5	5	5	5	5	5	5	10	5	5	70
F	Construction	15	10	10	5	5	10	10	5	10	10	10	10	5	115
G	Retailing & Wholesale	25	30	25	20	20	20	30	25	10	15	20	20	20	280
H	Hotels & Catering	10	15	5	10	10	15	15	20	10	10	15	15	10	160
I	Transport & Comms.	5	10	5	5	5	5	10	5	5	15	10	10	5	95
J	Finance	0	0	0	0	0	0	0	0	0	0	0	0	0	0
K	Business Services	5	10	15	10	15	10	15	15	15	15	10	20	20	175
L,O	Public Admin & Other	10	10	5	5	10	5	5	5	5	5	5	0	5	75
M,N	Education & Health	5	5	0	5	0	0	0	0	0	0	0	0	0	15
	Total	85	90	75	65	75	75	90	80	65	80	75	85	65	1,005

Note: Figures may not tally exactly due to rounding

Registration of 2 or less are recorded as 0

Source: Small Business Service

Table A1.19: Derwentside Business Registrations, 1994-2006

SIC 92	Industry	1994	1995	1996	1997	1998	1999	2000	2001	2002	2003	2004	2005	2006	Total
A,B	Agriculture	5	5	0	0	0	5	0	0	5	5	0	0	5	30
C,E	Mining & Utilities	0	0	0	0	0	0	0	0	0	0	0	0	0	0
D	Manufacturing	10	10	10	5	10	5	10	10	10	10	15	5	15	125
F	Construction	10	10	20	10	15	25	20	20	15	25	25	35	30	260
G	Retailing & Wholesale	35	25	25	35	35	25	35	40	30	40	40	25	45	435
H	Hotels & Catering	20	25	20	25	20	30	25	20	20	30	25	25	25	310
I	Transport & Comms.	5	10	10	10	15	10	10	10	5	15	15	20	10	145
J	Finance	0	0	0	0	0	0	0	0	0	0	0	0	0	0
K	Business Services	10	20	25	30	30	25	25	30	35	40	35	30	50	385
L,O	Public Admin & Other	15	10	5	5	10	10	5	5	5	0	5	5	5	85
M,N	Education & Health	5	0	0	0	0	0	5	0	5	0	0	0	5	20
	Total	115	120	120	125	135	140	135	140	140	165	160	150	190	1,835

Note: Figures may not tally exactly due to rounding

Registration of 2 or less are recorded as 0

Source: Small Business Service

Table A1.20: Derwentside Business De-Registrations, 1994-2006

SIC 92	Industry	1994	1995	1996	1997	1998	1999	2000	2001	2002	2003	2004	2005	2006	Total
A,B	Agriculture	5	5	5	10	5	5	5	5	5	0	5	5	0	60
C,E	Mining & Utilities	0	0	0	0	0	0	0	0	0	0	0	0	0	0
D	Manufacturing	15	10	15	10	5	10	5	10	10	5	10	5	10	120
F	Construction	20	15	15	15	5	10	10	15	10	10	15	25	10	175
G	Retailing & Wholesale	60	45	30	40	30	35	40	35	35	35	25	30	20	460
H	Hotels & Catering	25	30	25	25	25	20	20	20	20	25	25	20	15	295
I	Transport & Comms.	10	15	5	5	5	5	10	10	10	5	10	5	5	100
J	Finance	0	0	0	0	0	0	0	0	0	0	0	0	0	0
K	Business Services	15	15	5	10	15	15	15	20	20	20	30	25	20	225
L,O	Public Admin & Other	15	10	15	5	10	5	5	10	5	5	5	5	5	100
M,N	Education & Health	0	0	0	0	0	0	0	5	0	5	0	0	0	10
	Total	165	150	120	125	100	105	120	115	115	115	125	115	90	1,560

Note: Figures may not tally exactly due to rounding

Registration of 2 or less are recorded as 0

Source: Small Business Service

Table A1.21: Durham Business Registrations, 1994-2006

SIC 92	Industry	1994	1995	1996	1997	1998	1999	2000	2001	2002	2003	2004	2005	2006	Total
A,B	Agriculture	5	0	5	0	5	5	0	5	0	0	5	5	0	35
C,E	Mining & Utilities	0	0	0	0	0	0	0	0	0	0	0	0	0	0
D	Manufacturing	5	5	10	10	5	0	10	10	15	5	10	5	5	95
F	Construction	15	10	10	15	10	15	20	15	20	15	15	25	25	210
G	Retailing & Wholesale	25	20	30	20	25	25	20	25	35	40	25	35	25	350
H	Hotels & Catering	15	20	30	20	25	20	35	20	20	20	30	30	20	305
I	Transport & Comms.	5	10	15	5	5	5	10	15	10	10	15	10	5	120
J	Finance	5	0	0	5	0	0	0	0	0	0	0	0	0	10
K	Business Services	25	35	30	35	55	45	60	40	50	65	55	50	55	600
L,O	Public Admin & Other	10	15	5	10	10	10	5	10	5	5	10	5	10	110
M,N	Education & Health	0	5	5	5	0	5	5	0	0	5	0	5	5	40
	Total	115	130	135	130	140	135	170	140	155	170	170	175	160	1,925

Note: Figures may not tally exactly due to rounding

Registration of 2 or less are recorded as 0

Source: Small Business Service

Table A1.22: Durham Business De-Registrations, 1994-2006

SIC 92	Industry	1994	1995	1996	1997	1998	1999	2000	2001	2002	2003	2004	2005	2006	Total
A,B	Agriculture	5	0	5	5	5	5	0	5	5	0	5	5	0	45
C,E	Mining & Utilities	0	0	0	0	0	0	0	0	0	0	0	0	0	0
D	Manufacturing	10	5	5	5	5	5	5	5	5	10	5	10	10	85
F	Construction	20	15	20	10	15	10	10	10	10	10	10	15	10	165
G	Retailing & Wholesale	50	40	40	25	25	30	30	25	25	35	35	20	20	400
H	Hotels & Catering	20	20	25	15	25	20	20	20	20	15	20	20	20	260
I	Transport & Comms.	5	5	10	10	10	10	10	10	10	10	10	15	5	120
J	Finance	0	5	0	0	0	0	0	0	0	0	0	0	0	5
K	Business Services	15	25	15	20	20	25	15	25	30	35	35	45	50	355
L,O	Public Admin & Other	15	15	15	5	10	5	5	5	10	5	5	5	5	105
M,N	Education & Health	0	10	5	0	5	5	0	5	0	0	0	5	0	35
	Total	145	145	130	105	115	115	95	100	115	130	120	140	130	1,585

Note: Figures may not tally exactly due to rounding

Registration of 2 or less are recorded as 0

Source: Small Business Service

Table A1.23: Easington Business Registrations, 1994-2006

SIC 92	Industry	1994	1995	1996	1997	1998	1999	2000	2001	2002	2003	2004	2005	2006	Total
A,B	Agriculture	5	0	0	0	0	5	5	5	5	0	0	0	0	25
C,E	Mining & Utilities	0	0	0	0	0	0	0	0	0	0	0	0	0	0
D	Manufacturing	10	10	10	10	5	5	10	10	10	10	10	5	5	110
F	Construction	10	10	10	15	10	15	15	10	10	15	15	20	5	160
G	Retailing & Wholesale	40	25	35	20	25	30	20	25	35	35	35	30	30	385
H	Hotels & Catering	25	15	15	15	10	25	20	15	20	20	25	15	25	245
I	Transport & Comms.	10	10	10	10	5	10	15	10	10	15	10	20	20	155
J	Finance	0	0	0	0	0	0	0	0	0	0	0	0	0	0
K	Business Services	5	10	15	15	25	15	15	20	15	20	20	15	20	210
L,O	Public Admin & Other	15	5	5	15	5	5	5	5	5	5	5	5	5	85
M,N	Education & Health	0	0	0	0	0	0	0	0	0	0	0	0	5	5
	Total	120	90	100	95	95	115	105	105	110	120	120	115	115	1,405

Note: Figures may not tally exactly due to rounding

Registration of 2 or less are recorded as 0

Source: Small Business Service

Table A1.24: Easington Business De-Registrations, 1994-2006

SIC 92	Industry	1994	1995	1996	1997	1998	1999	2000	2001	2002	2003	2004	2005	2006	Total
A,B	Agriculture	5	0	5	5	5	0	0	0	5	0	5	5	0	35
C,E	Mining & Utilities	0	0	0	0	0	0	0	0	0	0	0	0	0	0
D	Manufacturing	10	5	10	5	5	5	5	5	10	5	10	5	10	90
F	Construction	20	20	10	10	15	10	15	10	10	10	5	15	10	160
G	Retailing & Wholesale	50	45	35	45	35	30	20	45	25	20	30	30	25	435
H	Hotels & Catering	20	25	20	15	15	15	15	10	15	10	15	10	15	200
I	Transport & Comms.	10	10	10	10	10	5	5	10	10	10	10	10	5	115
J	Finance	0	0	0	0	0	0	0	0	0	0	0	0	0	0
K	Business Services	10	10	10	5	10	5	15	10	10	10	10	20	10	135
L,O	Public Admin & Other	5	10	10	5	10	10	10	5	10	5	5	5	0	90
M,N	Education & Health	0	0	0	5	0	0	0	0	0	0	5	0	0	10
	Total	135	135	105	105	95	80	85	95	85	75	90	95	80	1,260

Note: Figures may not tally exactly due to rounding

Registration of 2 or less are recorded as 0

Source: Small Business Service

Table A1.25: Northumberland 4 Business Registrations, 1994-2006

SIC 92	Industry	1994	1995	1996	1997	1998	1999	2000	2001	2002	2003	2004	2005	2006	Total
A,B	Agriculture	25	30	20	20	25	20	20	20	45	15	20	35	25	320
C,E	Mining & Utilities	0	0	0	0	0	0	0	0	0	0	0	0	0	0
D	Manufacturing	35	40	25	35	35	45	35	25	35	35	30	20	35	430
F	Construction	35	35	45	50	45	45	50	60	60	75	85	60	75	720
G	Retailing & Wholesale	100	120	110	95	100	105	100	80	90	115	105	120	110	1,350
H	Hotels & Catering	60	55	80	55	55	75	85	65	75	65	70	70	75	885
I	Transport & Comms.	25	20	20	30	25	20	25	15	25	25	20	40	40	330
J	Finance	0	0	0	0	0	0	5	5	0	5	0	0	0	15
K	Business Services	95	110	115	120	150	115	160	130	130	160	135	155	145	1,720
L,O	Public Admin & Other	60	55	30	40	35	30	30	25	20	25	30	30	35	445
M,N	Education & Health	25	5	0	0	5	0	5	10	5	0	0	5	15	75
	Total	475	480	440	445	465	475	510	450	505	535	505	535	555	6,375

Note: Figures may not tally exactly due to rounding

Registration of 2 or less are recorded as 0

Source: Small Business Service

Table A1.26: Northumberland 4 Business De-Registrations, 1994-2006

SIC 92	Industry	1994	1995	1996	1997	1998	1999	2000	2001	2002	2003	2004	2005	2006	Total
A,B	Agriculture	20	35	35	35	30	35	25	35	20	30	25	25	35	385
C,E	Mining & Utilities	0	0	0	0	0	0	0	0	0	0	0	0	0	0
D	Manufacturing	35	30	30	25	25	25	25	35	30	30	25	25	25	365
F	Construction	70	75	55	40	45	40	40	30	45	30	35	50	40	595
G	Retailing & Wholesale	140	145	135	125	105	105	95	100	110	105	105	100	95	1,465
H	Hotels & Catering	75	55	60	50	45	70	65	60	60	60	60	45	45	750
I	Transport & Comms.	30	30	20	20	15	25	25	20	25	30	25	20	20	305
J	Finance	0	5	0	0	0	0	0	0	0	0	0	0	0	5
K	Business Services	60	75	55	60	70	85	80	90	105	85	105	105	100	1,075
L,O	Public Admin & Other	40	30	45	35	35	35	45	15	30	20	30	25	20	405
M,N	Education & Health	10	20	10	15	0	5	0	10	0	5	0	0	0	75
	Total	465	505	445	400	370	415	395	395	430	410	415	400	395	5,440

Note: Figures may not tally exactly due to rounding

Registration of 2 or less are recorded as 0

Source: Small Business Service

Table A1.27: Blyth Valley Business Registrations, 1994-2006

SIC 92	Industry	1994	1995	1996	1997	1998	1999	2000	2001	2002	2003	2004	2005	2006	Total
A,B	Agriculture	0	0	0	0	0	0	0	0	0	0	0	0	0	0
C,E	Mining & Utilities	0	0	0	0	0	0	0	0	0	0	0	0	0	0
D	Manufacturing	10	10	5	15	10	15	10	5	10	10	15	5	15	135
F	Construction	15	10	15	25	15	15	15	30	25	30	30	15	25	265
G	Retailing & Wholesale	25	35	30	30	25	30	25	25	35	25	40	30	30	385
H	Hotels & Catering	10	10	20	15	15	15	25	20	20	10	20	15	15	210
I	Transport & Comms.	10	10	10	10	10	10	5	5	10	5	5	5	20	115
J	Finance	0	0	0	0	0	0	0	0	0	0	0	0	0	0
K	Business Services	15	25	15	25	35	25	40	25	35	30	20	25	30	345
L,O	Public Admin & Other	10	15	5	10	5	5	10	5	5	10	5	5	10	100
M,N	Education & Health	5	0	0	0	0	0	0	5	0	0	0	0	0	10
	Total	105	120	100	125	110	115	125	125	150	125	135	105	140	1,580

Note: Figures may not tally exactly due to rounding

Registration of 2 or less are recorded as 0

Source: Small Business Service

Table A1.28: Blyth Valley Business De-Registrations, 1994-2006

SIC 92	Industry	1994	1995	1996	1997	1998	1999	2000	2001	2002	2003	2004	2005	2006	Total
A,B	Agriculture	0	0	0	0	0	0	0	0	0	0	5	0	0	5
C,E	Mining & Utilities	0	0	0	0	0	0	0	0	0	0	0	0	0	0
D	Manufacturing	10	10	5	5	10	10	5	10	5	5	10	5	10	100
F	Construction	20	25	20	10	15	15	15	10	15	15	10	20	15	205
G	Retailing & Wholesale	40	40	40	30	30	20	25	25	20	25	30	30	30	385
H	Hotels & Catering	15	15	20	15	5	15	15	20	15	10	10	10	10	175
I	Transport & Comms.	10	5	5	5	5	10	15	10	5	10	5	5	5	95
J	Finance	0	5	0	0	0	0	0	0	0	0	0	0	0	5
K	Business Services	10	15	15	10	15	15	20	25	25	15	15	20	15	215
L,O	Public Admin & Other	10	10	15	5	5	5	10	5	10	5	0	5	5	90
M,N	Education & Health	0	5	5	5	0	0	0	5	0	0	0	0	0	20
	Total	110	130	125	80	85	90	100	105	100	95	90	95	90	1,295

Note: Figures may not tally exactly due to rounding

Registration of 2 or less are recorded as 0

Source: Small Business Service

Table A1.29: Castle Morpeth Business Registrations, 1994-2006

SIC 92	Industry	1994	1995	1996	1997	1998	1999	2000	2001	2002	2003	2004	2005	2006	Total
A,B	Agriculture	10	5	10	0	5	5	0	5	10	5	5	5	10	75
C,E	Mining & Utilities	0	0	0	0	0	0	0	0	0	0	0	0	0	0
D	Manufacturing	10	10	5	10	10	10	5	5	5	10	0	5	5	90
F	Construction	5	5	10	10	10	10	10	15	15	10	15	15	20	150
G	Retailing & Wholesale	30	20	30	20	25	20	30	20	15	20	15	25	25	295
H	Hotels & Catering	15	10	20	15	10	15	15	15	15	15	15	15	15	190
I	Transport & Comms.	5	5	0	10	5	5	5	5	5	5	0	10	5	65
J	Finance	0	0	0	0	0	0	5	5	0	0	0	0	0	10
K	Business Services	35	40	30	40	50	35	35	35	35	45	40	45	50	515
L,O	Public Admin & Other	20	15	10	10	15	10	5	5	5	5	10	10	10	130
M,N	Education & Health	5	0	0	0	0	0	5	0	0	0	0	0	5	15
	Total	140	110	115	110	130	120	115	110	110	115	110	125	145	1,555

Note: Figures may not tally exactly due to rounding

Registration of 2 or less are recorded as 0

Source: Small Business Service

Table A1.30: Castle Morpeth Business De-Registrations, 1994-2006

SIC 92	Industry	1994	1995	1996	1997	1998	1999	2000	2001	2002	2003	2004	2005	2006	Total
A,B	Agriculture	10	10	10	10	10	10	10	10	5	10	5	10	5	115
C,E	Mining & Utilities	0	0	0	0	0	0	0	0	0	0	0	0	0	0
D	Manufacturing	5	10	10	5	5	5	10	10	10	10	5	0	5	90
F	Construction	15	20	10	5	10	5	5	5	10	5	10	10	10	120
G	Retailing & Wholesale	30	30	30	45	15	40	30	35	40	30	25	25	20	395
H	Hotels & Catering	15	10	10	10	10	20	10	10	15	10	20	10	10	160
I	Transport & Comms.	5	5	5	5	5	5	0	0	5	5	5	0	5	50
J	Finance	0	0	0	0	0	0	0	0	0	0	0	0	0	0
K	Business Services	20	25	15	20	25	25	25	30	30	20	30	35	30	330
L,O	Public Admin & Other	10	5	10	10	10	10	15	5	10	5	10	5	10	115
M,N	Education & Health	5	5	0	0	0	0	0	5	0	0	0	0	0	15
	Total	115	125	95	115	90	115	105	115	125	105	115	100	95	1,415

Note: Figures may not tally exactly due to rounding

Registration of 2 or less are recorded as 0

Source: Small Business Service

Table A1.31: Tynedale Business Registrations, 1994-2006

SIC 92	Industry	1994	1995	1996	1997	1998	1999	2000	2001	2002	2003	2004	2005	2006	Total
A,B	Agriculture	15	20	10	15	20	15	20	15	30	10	10	25	15	220
C,E	Mining & Utilities	0	0	0	0	0	0	0	0	0	0	0	0	0	0
D	Manufacturing	10	10	10	5	10	10	15	10	15	15	10	10	10	140
F	Construction	10	15	15	10	15	15	15	10	10	20	20	15	15	185
G	Retailing & Wholesale	30	35	35	25	35	30	30	20	30	45	20	45	35	415
H	Hotels & Catering	20	20	20	10	20	30	30	25	30	20	30	30	35	320
I	Transport & Comms.	10	5	10	10	5	0	10	5	10	15	10	20	10	120
J	Finance	0	0	0	0	0	0	0	0	0	5	0	0	0	5
K	Business Services	35	35	55	45	50	45	65	55	45	65	55	65	55	670
L,O	Public Admin & Other	25	20	10	20	10	10	10	10	5	10	10	10	15	165
M,N	Education & Health	10	0	0	0	5	0	0	5	5	0	0	5	5	35
	Total	170	165	160	145	165	165	195	155	185	205	165	225	190	2,290

Note: Figures may not tally exactly due to rounding

Registration of 2 or less are recorded as 0

Source: Small Business Service

Table A1.32: Tynedale Business De-Registrations, 1994-2006

SIC 92	Industry	1994	1995	1996	1997	1998	1999	2000	2001	2002	2003	2004	2005	2006	Total
A,B	Agriculture	10	20	25	20	15	25	10	25	15	15	15	15	25	235
C,E	Mining & Utilities	0	0	0	0	0	0	0	0	0	0	0	0	0	0
D	Manufacturing	15	5	10	10	10	5	5	10	10	10	10	15	5	120
F	Construction	20	20	20	15	15	15	15	10	10	5	10	15	10	180
G	Retailing & Wholesale	40	40	35	30	30	30	25	30	30	35	30	30	25	410
H	Hotels & Catering	30	15	15	15	15	20	25	20	20	25	20	15	15	250
I	Transport & Comms.	10	15	10	10	5	5	5	5	10	10	10	10	10	115
J	Finance	0	0	0	0	0	0	0	0	0	0	0	0	0	0
K	Business Services	25	25	20	20	25	35	25	25	35	40	50	40	40	405
L,O	Public Admin & Other	15	10	15	15	15	15	15	5	10	10	15	15	5	160
M,N	Education & Health	5	5	5	5	0	5	0	0	0	5	0	0	0	30
	Total	170	155	155	140	135	155	130	125	145	150	155	150	145	1,910

Note: Figures may not tally exactly due to rounding

Registration of 2 or less are recorded as 0

Source: Small Business Service

Table A1.33: Wansbeck Business Registrations, 1994-2006

SIC 92	Industry	1994	1995	1996	1997	1998	1999	2000	2001	2002	2003	2004	2005	2006	Total
A,B	Agriculture	0	5	0	5	0	0	0	0	5	0	5	5	0	25
C,E	Mining & Utilities	0	0	0	0	0	0	0	0	0	0	0	0	0	0
D	Manufacturing	5	10	5	5	5	10	5	5	5	0	5	0	5	65
F	Construction	5	5	5	5	5	5	10	5	10	15	20	15	15	120
G	Retailing & Wholesale	15	30	15	20	15	25	15	15	10	25	30	20	20	255
H	Hotels & Catering	15	15	20	15	10	15	15	5	10	20	5	10	10	165
I	Transport & Comms.	0	0	0	0	5	5	5	0	0	0	5	5	5	30
J	Finance	0	0	0	0	0	0	0	0	0	0	0	0	0	0
K	Business Services	10	10	15	10	15	10	20	15	15	20	20	20	10	190
L,O	Public Admin & Other	5	5	5	0	5	5	5	5	5	0	5	5	0	50
M,N	Education & Health	5	5	0	0	0	0	0	0	0	0	0	0	5	15
	Total	60	85	65	65	60	75	75	60	60	90	95	80	80	950

Note: Figures may not tally exactly due to rounding

Registration of 2 or less are recorded as 0

Source: Small Business Service

Table A1.34: Wansbeck Business De-Registrations, 1994-2006

SIC 92	Industry	1994	1995	1996	1997	1998	1999	2000	2001	2002	2003	2004	2005	2006	Total
A,B	Agriculture	0	5	0	5	5	0	5	0	0	5	0	0	5	30
C,E	Mining & Utilities	0	0	0	0	0	0	0	0	0	0	0	0	0	0
D	Manufacturing	5	5	5	5	0	5	5	5	5	5	0	5	5	55
F	Construction	15	10	5	10	5	5	5	5	10	5	5	5	5	90
G	Retailing & Wholesale	30	35	30	20	30	15	15	10	20	15	20	15	20	275
H	Hotels & Catering	15	15	15	10	15	15	15	10	10	15	10	10	10	165
I	Transport & Comms.	5	5	0	0	0	5	5	5	5	5	5	5	0	45
J	Finance	0	0	0	0	0	0	0	0	0	0	0	0	0	0
K	Business Services	5	10	5	10	5	10	10	10	15	10	10	10	15	125
L,O	Public Admin & Other	5	5	5	5	5	5	5	0	0	0	5	0	0	40
M,N	Education & Health	0	5	0	5	0	0	0	0	0	0	0	0	0	10
	Total	70	95	70	65	60	55	60	50	60	60	55	55	65	820

Note: Figures may not tally exactly due to rounding

Registration of 2 or less are recorded as 0

Source: Small Business Service

APPENDIX 2: BUSINESS REGISTRATIONS AND DE-REGISTRATIONS IN LEEDS CITY REGION, 1994-2006

Table A2.4.1: Business Registrations in Leeds CR, 1994-2006

SIC 92	Industry	1994	1995	1996	1997	1998	1999	2000	2001	2002	2003	2004	2005	2006	Total
A,B	Agriculture	120	90	120	110	85	95	80	95	90	95	110	110	95	1,295
C,E	Mining & Utilities	5	0	5	0	0	5	0	0	0	0	0	0	0	15
D	Manufacturing	550	600	635	645	595	560	650	575	545	605	500	490	465	7,415
F	Construction	640	645	700	720	650	655	670	735	795	1,050	995	995	1,040	10,290
G	Retailing & Wholesale	1,830	1,725	1,675	1,565	1,655	1,625	1,650	1,435	1,625	1,810	1,835	1,745	1,635	21,810
H	Hotels & Catering	880	710	690	750	790	795	835	920	895	925	945	860	850	10,845
I	Transport & Comms.	325	355	350	335	385	385	430	425	400	465	465	470	450	5,240
J	Finance	100	75	45	70	65	65	75	75	45	65	60	55	60	855
K	Business Services	1,550	1,690	1,820	2,005	2,225	2,085	2,115	2,100	2,380	2,555	2,370	2,470	2,620	27,985
L,O	Public Admin & Other	630	545	455	740	510	450	475	385	380	370	300	315	335	5,890
M,N	Education & Health	145	65	65	95	75	90	100	85	100	95	80	105	130	1,230
	Total	6,785	6,505	6,570	7,065	7,065	6,845	7,115	6,810	7,300	8,075	7,680	7,645	7,670	93,130

Note: Figures may not tally exactly due to rounding

Registration of 2 or less are recorded as 0

Source: Small Business Service

Table A2.5.1: Business De-Registrations in Leeds CR, 1994-2006

SIC 92	Industry	1994	1995	1996	1997	1998	1999	2000	2001	2002	2003	2004	2005	2006	Total
A,B	Agriculture	140	125	135	140	155	140	140	130	125	120	110	120	140	1,720
C,E	Mining & Utilities	5	0	0	5	5	0	0	0	0	0	10	0	0	25
D	Manufacturing	710	635	615	585	590	605	610	650	665	665	630	595	565	8,120
F	Construction	1,025	875	735	715	645	680	610	610	630	630	645	690	650	9,140
G	Retailing & Wholesale	2,555	2,390	2,105	2,070	1,930	1,840	1,770	1,705	1,785	1,580	1,615	1,475	1,430	24,250
H	Hotels & Catering	940	895	805	720	720	720	730	785	860	740	765	695	605	9,980
I	Transport & Comms.	310	340	335	310	350	375	340	365	340	345	315	380	325	4,430
J	Finance	20	65	40	45	30	30	45	50	60	35	30	60	55	565
K	Business Services	990	1,035	975	1,040	1,020	1,235	1,460	1,595	1,685	1,605	1,620	1,650	1,695	17,605
L,O	Public Admin & Other	565	570	435	450	420	440	405	430	410	385	375	310	360	5,555
M,N	Education & Health	50	160	105	150	65	55	65	75	70	65	55	75	55	1,045
	Total	7,320	7,085	6,280	6,220	5,920	6,110	6,175	6,400	6,610	6,190	6,170	6,030	5,890	82,400

Note: Figures may not tally exactly due to rounding

Registration of 2 or less are recorded as 0

Source: Small Business Service

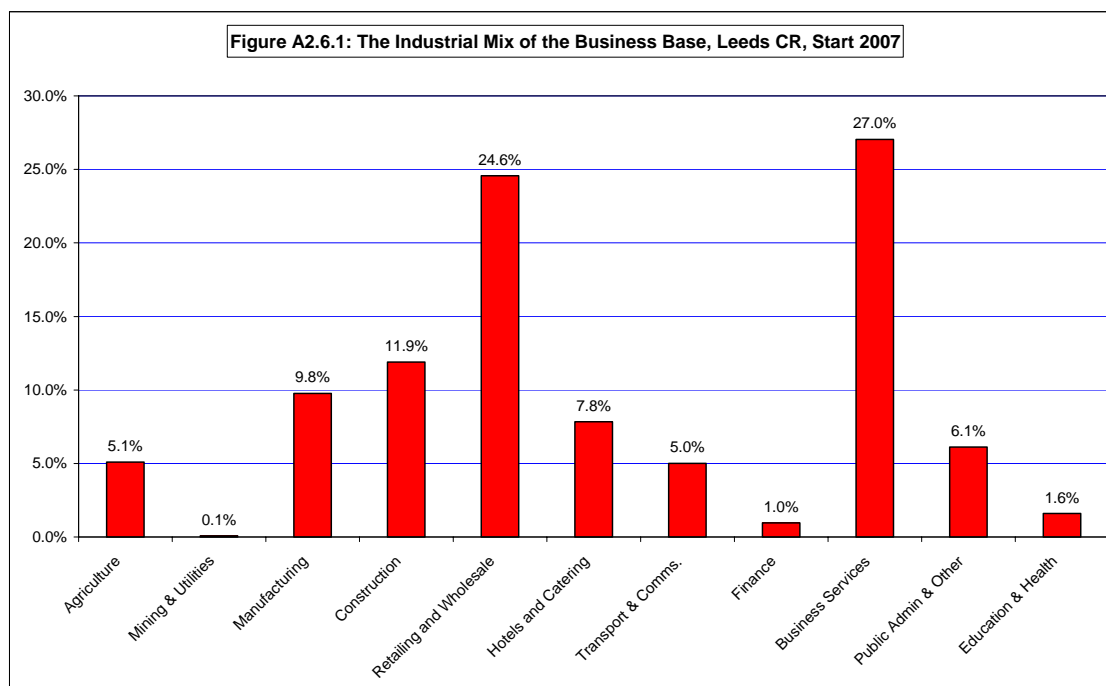


Table A.2.6.1: Stock of Business and Annual Change in Leeds CR, 2002-2006

SIC 92	Industry	2002			2003			2004			2005			2006		
		start	end	% change	start	end	% change	start	end	% change	start	end	% change	start	end	% change
A,B	Agriculture	4,135	4,105	-0.7	4,110	4,085	-0.6	4,080	4,085	0.1	4,085	4,085	0.0	4,085	4,040	-1.1
C,E	Mining & Utilities	55	55	0.0	55	55	0.0	55	50	-9.1	55	55	0.0	50	50	0.0
D	Manufacturing	8,260	8,140	-1.5	8,155	8,110	-0.6	8,095	7,960	-1.7	7,960	7,850	-1.4	7,845	7,755	-1.1
F	Construction	7,755	7,925	2.2	7,920	8,350	5.4	8,355	8,715	4.3	8,705	9,020	3.6	9,020	9,420	4.4
G	Retailing & Wholesale	18,705	18,540	-0.9	18,540	18,760	1.2	18,765	18,980	1.1	18,975	19,250	1.4	19,260	19,465	1.1
H	Hotels & Catering	5,405	5,440	0.6	5,430	5,620	3.5	5,620	5,805	3.3	5,810	5,970	2.8	5,970	6,215	4.1
I	Transport & Comms.	3,425	3,480	1.6	3,480	3,610	3.7	3,610	3,750	3.9	3,755	3,855	2.7	3,840	3,955	3.0
J	Finance	705	705	0.0	700	725	3.6	730	760	4.1	770	765	-0.6	770	770	0.0
K	Business Services	17,260	17,965	4.1	17,955	18,915	5.3	18,920	19,670	4.0	19,670	20,495	4.2	20,490	21,415	4.5
L,O	Public Admin & Other	4,955	4,935	-0.4	4,940	4,935	-0.1	4,935	4,860	-1.5	4,860	4,875	0.3	4,870	4,850	-0.4
M,N	Education & Health	1,055	1,090	3.3	1,095	1,130	3.2	1,115	1,135	1.8	1,145	1,185	3.5	1,190	1,255	5.5
	Total	71,715	72,395	0.9	72,400	74,285	2.6	74,285	75,810	2.1	75,810	77,430	2.1	77,420	79,195	2.3

Note: % change may not tally with changes in business stock due to rounding of stock.

Source: Small Business Service

