

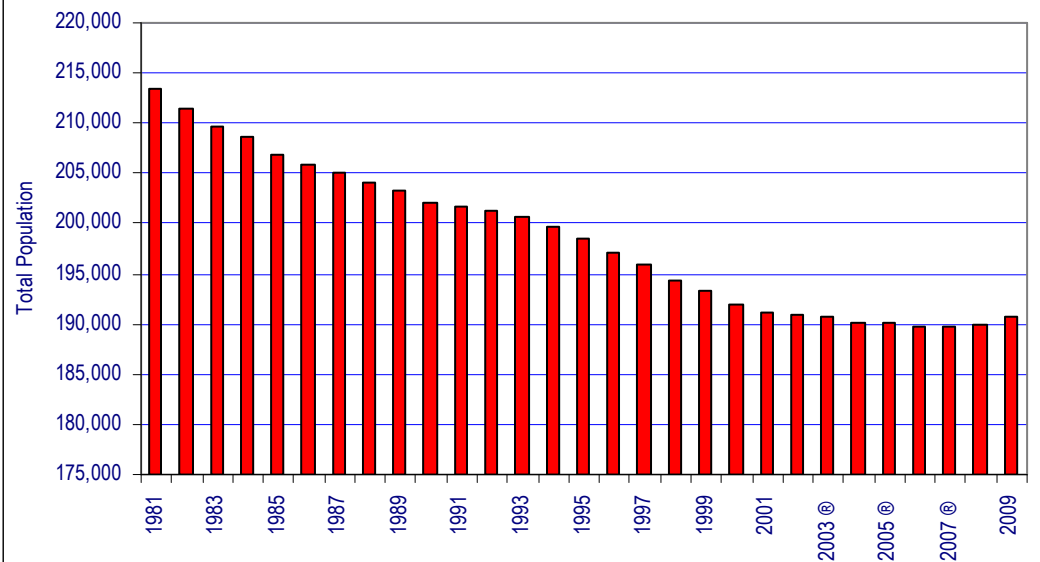
This bulletin provides a summary of key demographic points for Gateshead

KEY POINTS

Baseline population...

- Gateshead's population rose by 900 (or 0.5%) in the year to mid-2009**, to 190,800. This is a fall of -10.6% since 1981. Over the same period there was a fall of -4.3% in Tyne and Wear. Over the period 2001-2009 the population of Gateshead fell by -0.2%, compared to growth in Tyne and Wear of 1.8%.

Total Population; Gateshead, 1981-2009



Source: ONS Mid-Year Estimates

Ethnic minority representation...

- Experimental statistics for mid-2007¹ show that ethnic minority groups in Gateshead made up 3.9% of the total population, compared with 5.8% for Tyne and Wear.
- The largest single ethnic minority groups in Gateshead are Black African and Indian, each accounting for 0.6% of the total population. (The 'Other White'² group accounts for 1.6%.)

Natural change...

- From mid-2008 to mid-2009 natural change was positive in Gateshead, at 300. In Tyne and Wear the figure was 1,500 (based on ONS 2009 Components of Change).

Migration...

Internal (Domestic)

- In 2009, Gateshead had a net loss of -118 through internal migration, compared with a net loss of -404 in 2002. In Tyne and Wear net internal migration has remained negative over the same period, but rose from -1,950 in 2002 to -2,364 in 2009.

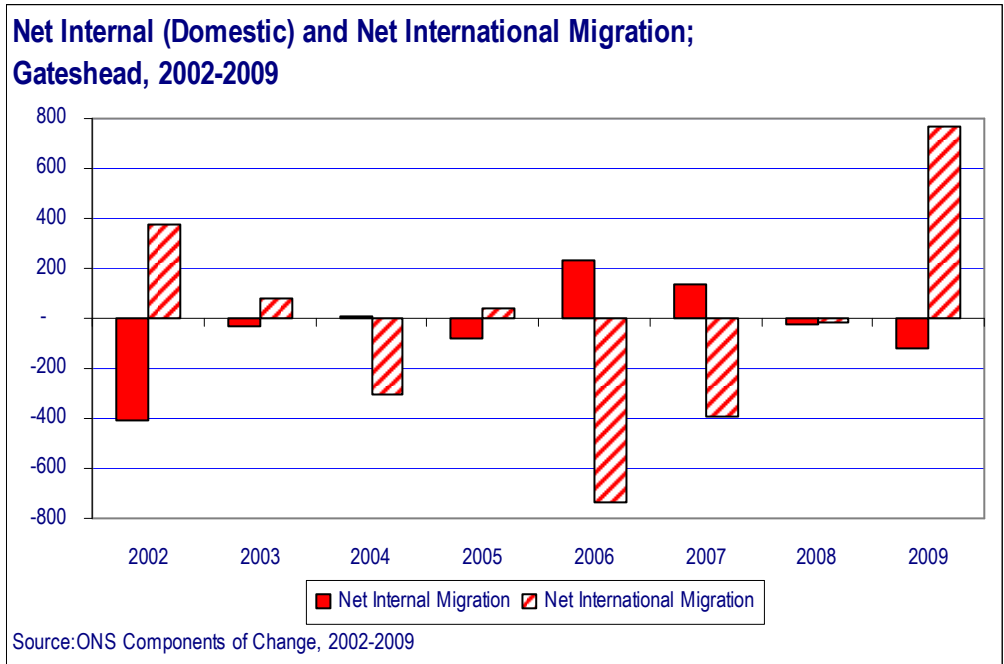
International

- Net Total International Migration (TIM) was positive in 2009, at +767. This reflects an increase from +380 in 2002, but also a reversal of the losses experienced between 2006-2008.

¹ 2008 data are due around July/August 2010

² This refers to those who are neither White British, nor White Irish, but White.

- In 2002-03 the number of new National Insurance numbers (NINos) issued to non-UK nationals resident in Gateshead was 450. The main groups represented were Iraqi and Chinese, (both 8.9%). In 2008-09 there were 790 new numbers issued to non-UK nationals in Gateshead, and the main groups were Polish (24.1%), and Indian and Chinese (both 6.3%).



Population projections...

- The ONS projected population for Gateshead to 2033 (based on their 2008 Mid-Year Estimates) is 204,900. This is a growth of 7.9% (or 15,000) from 2008. Tyne and Wear is projected to have a 10.3% (or 113,300) growth over the same period.

