

POPULATION IN SOUTH TYNESIDE [based on revised MYEs 2002-2008]

This bulletin provides a summary of key demographic points for South Tyneside

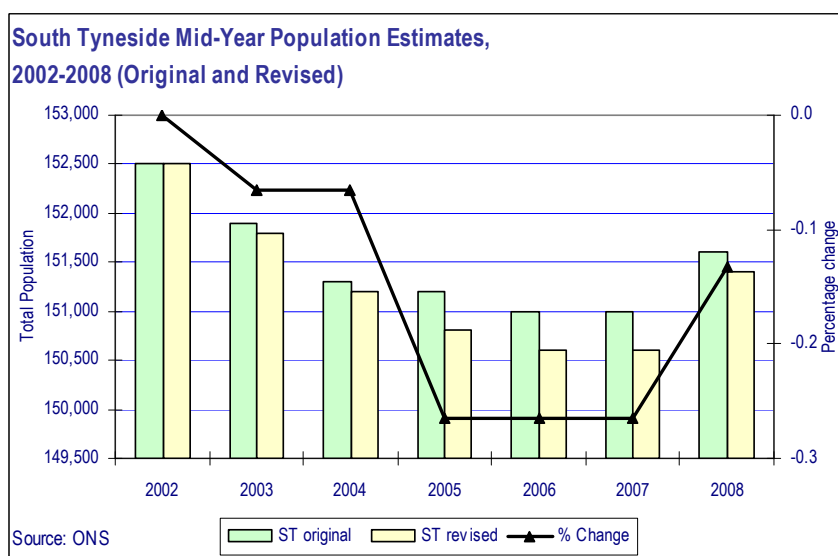
KEY POINTS

ONS has published revised Mid-Year Estimates for 2002-2008. These data are now the official population data for England & Wales.

TWRI has produced bulletins for Tyne & Wear and each of the five Tyne & Wear Districts.

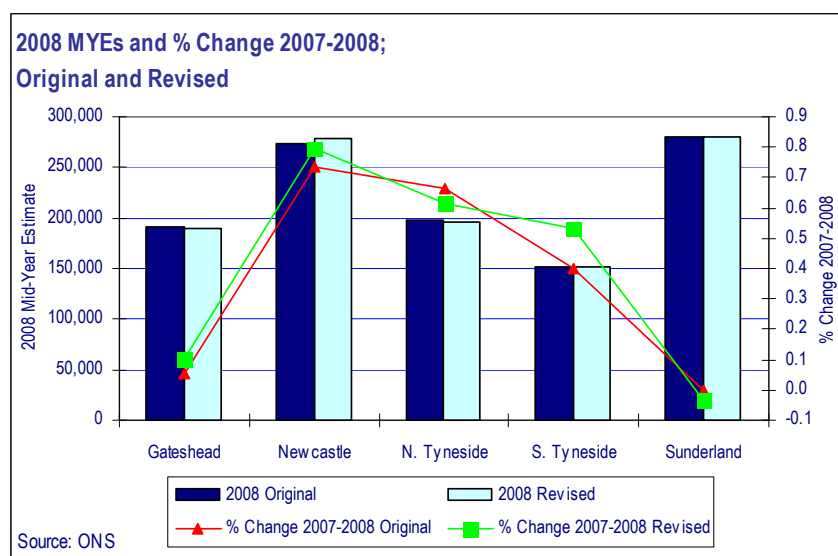
Impact of revisions...

- Over the period 2002-2008 the population in South Tyneside fell by -0.7% , compared to growth of 0.8% in Tyne and Wear.
- The population of South Tyneside has been revised down by 0.1% (or -200) in the latest data. In Tyne & Wear, the population was revised up by 0.2% (or $+2,600$).



Baseline population...

- Between 2007 and 2008, the revised data show that **South Tyneside's population rose by 800 (or $+0.5\%$)**, to 151,400. Among the Tyne & Wear Districts, population growth was fastest in Newcastle (at $+0.8\%$) and slowest in Sunderland (slightly negative, at -0.04%).



Natural change...

- From mid-2007 to mid-2008 natural change was zero in South Tyneside. In Tyne and Wear the figure was 1,300. [Based on ONS revised 2008 Components of Change.] These figures remain unchanged from the originally published data.

Migration...

- ONS states that 'net migration & other changes' in South Tyneside in 2007-2008 were revised up by +200, to +900. The revised 2002-2008 data, including migration data, by Local Authority District is available from the ONS website via the following link <http://www.statistics.gov.uk/statbase/Product.asp?vlnk=15106>