



State of the Tyne & Wear Labour Market Report Winter 2009/10

This edition covers developments
mainly in the period
Oct—Dec 2009.

Ref:LMR 10/1

March 2010

CONTENTS

Summary and Key Points	1
§1:Employment Expectations	2
§2 Job Change Announcements	3
§3: Claimant Unemployment	4
Unemployment Forecasts, Vacancies, Change by Industry	7
Tables of itemised Job Gains and Losses	9

TWRI
1st Floor Provincial House
Northumberland Street
Newcastle upon Tyne
NE1 7DQ
Tel: (0191) 277 1912
Fax: (0191) 277 1911
E-MAIL: twri@twri.org.uk
WEBSITE: www.twri.org.uk

SUMMARY and KEY POINTS

Labour Market Overview

In the 3 months to December 2009 all three of Tyne & Wear's labour market indicators improved; surveys, press reports of jobs and, remarkably, claimant unemployment fell (partly seasonally) by a few hundred. Caution: the fall in claimant unemployment to December was small and temporary; it was reversed in January by a rise of about 2,400 or about 700 more than 'normal' seasonal rise¹.

- 1 TW firms reported in the Q4 survey² much smaller workforce reductions in services** and, remarkably, **in manufacturing³, a small growth.**
- 2 Job Change announcements by firms in TW were quite strongly positive** (gains exceeded losses by about 1,200 as in Q3). These two consecutive quarters of strong growth appear to mark a break with the mostly weak or shrinking employment of the 5 previous quarters from spring 2008. This press-based series is thus consistent with a resumption of modest employment growth. [Caution: this source omits many job losses and timings of the gains coming into effect are variable. See §2 for more details.]
- 3 Claimant unemployment in TW fell over the 3 months** from Sept-Dec (by nearly 300); this is a better performance than the UK, where the rise has been very modest. Nevertheless, in Jan. TW was 18% higher than 12 months before - a rise of around 6,200 to almost 40,000 – to a rate of 8.0%.
 - Over the year to January, claimant unemployment rates in TW have risen by about 1.3 percentage points; they have risen by over 3.3 percentage points in two Gateshead wards and one Sunderland ward (map shows this).
 - Notified vacancies to JobCentre Plus in Q4 were down about another 15% from a year before. They are down by about a third from 2 years ago. Vacancies were down by about 40% from 2 years ago in Sunderland and in North Tyneside.

Caution: normally, the fall in employment associated with a recession can be expected to continue for some quarters after output begins to rise again. This boost productivity and profitability. Consensus forecasts for the UK claimant count

are consistent with a further rise in Tyne & Wear of about 2,000 over the year to Q4 – which would take it to about 40,000. This is similar to the January total.

Unemployment

Over the 9 months to January, claimant **unemployment rose in all Districts (by hundreds) except in Sunderland** (down over 400). The rises were fastest in Newcastle and North Tyneside, perhaps indicating some modest spread of losses to the services sector. Sunderland has been rebounding from its earlier steeper fall into recession. It and South Tyneside might also have benefited from any modest rise in construction employment.

In the UK **seasonally adjusted claimant unemployment has risen only 2,000 over the 3 months to January**; it fell in Nov and Dec., but rose in January. The changes were -6,300 in Nov., -15,200 in Dec and +23,500 in January. This pattern is to be expected given the VAT rise in January (bringing forward some activity). The prolonged snow in January may also have temporarily hit some employment, especially in construction.

Also, official UK unemployment (using the LFS definition, which is wider than the claimant count) is estimated to have fallen in the 3 months to Dec compared with the previous 3 months⁴ by 3,000.

The **main change in the UK labour market** (numerically) is not in unemployment or employment; rather **economic inactivity has risen**. In particular, students may have given up looking for jobs (whilst they are studying).

Local Job Gains

Large gains in Q4 included 1,000 at Tesco (its Financial Services) in North Tyneside, 350 re-hirings at Nissan in Sunderland and 250 at The Listening Company in Newcastle (a call centre).

Additionally, 100 jobs at Sage (in customer support, for the software firm) in Newcastle.

Local Job Losses

The biggest loss was at North Tyneside council (300 job cuts). Others over 100 were Twinings 263, National Grid 189 (both in North Tyneside), plus BAE 167 and NE Bakery 120 (both in Newcastle).

Date: 16th March 2010.

¹ Based on 2005 and 2006.

² Business Survey NE (TW results only used here).

³ Business Survey North East's TW results (for the Chamber of Commerce).

⁴ Than the claimant count.

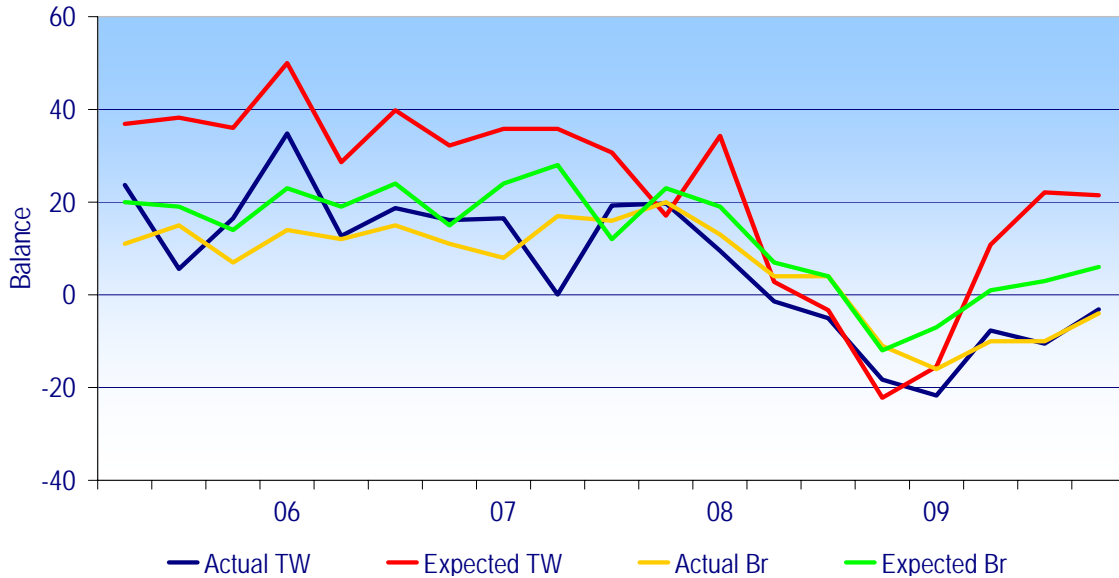
§1: Employment Expectations

In Q4 2009, Tyne & Wear *service* firms' employment continued to fall (blue line below zero), but this halved from Q3 (to about 5pp) like for British service firms (yellow).

Service firms' employment change has been negative in the last 5 quarters (Britain, yellow line) and 6 quarters (TW, blue line).

Caution: TW's high level of expected employment change, at about +20pp as in Q3 (red) may not mean much growth: historically, TW service firms have usually been over-optimistic by around 15-20pp, whereas British service firms have been so by around 10pp.

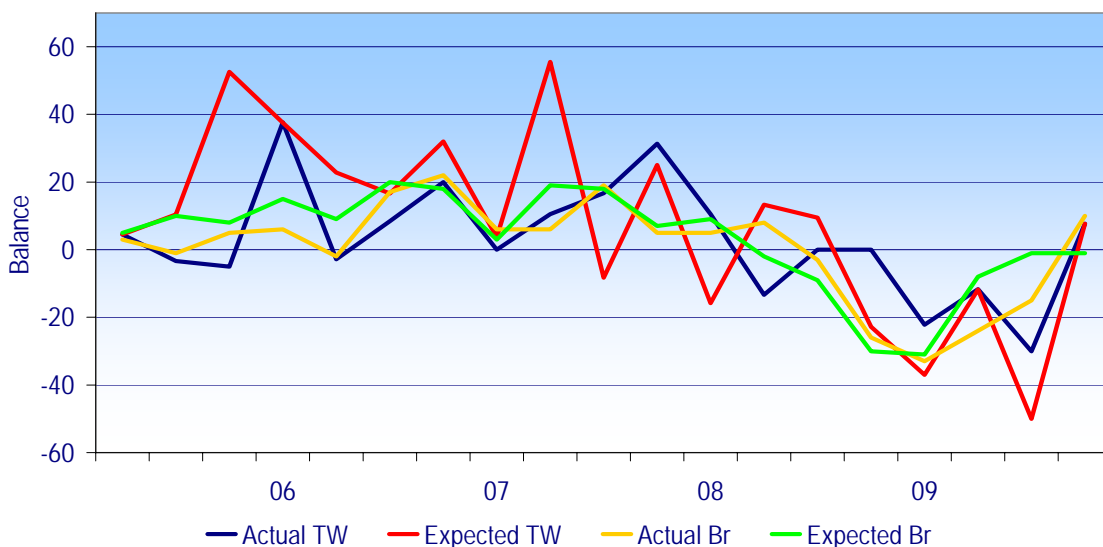
Service Workforce Britain and TW



Source: Business Survey NE (TW data) – from Economic Research Services; national data from British Chamber of Commerce. Caution: these measures weight all firms equally, and make no allowance for the different scale of job changes in different firms and industries.

For the first time since early 2008, Tyne & Wear *manufacturing* firms' reported employment change in Q3 was positive (blue line), as was British firms' (yellow line). This follows a weak Q3 for Tyne & Wear manufacturing firms.

Manufacturing Workforce Britain and TW

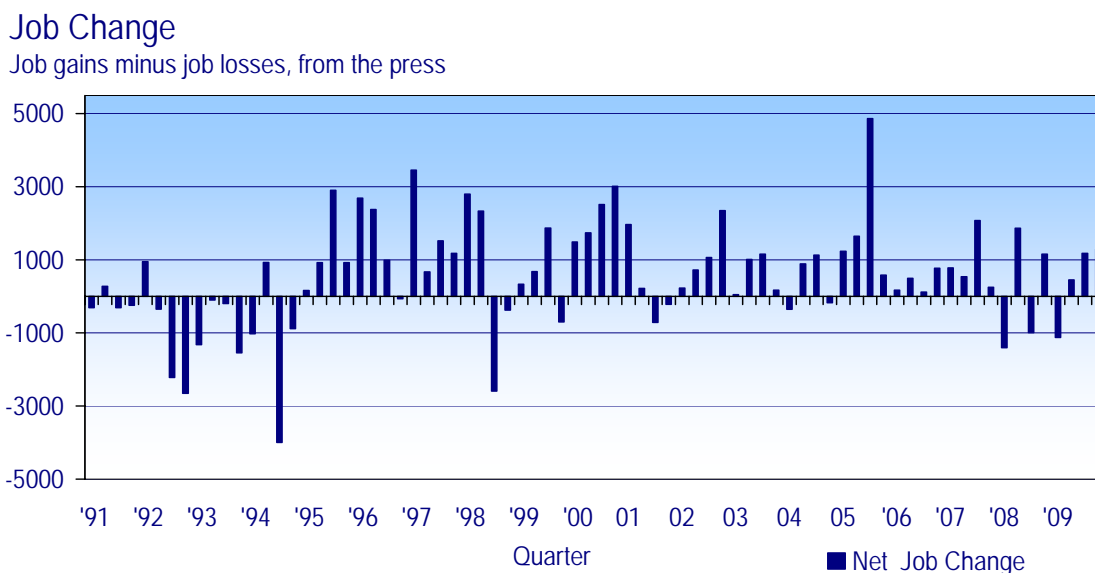


Caution: the expectations of manufacturing firms (for the next 3 months) proved to have a poor forecasting ability over the four years. In Q3 this was extreme; the record gloomy manufacturing employment prospects (about -50pp) among TW's firms (red line) was followed by employment growth! They have been replaced by mildly positive prospects, slightly above Britain's (green line).

§2: Job Change Announcements

Job Changes in the Q4⁵ period (as reported in the press), on a net basis, were quite strongly positive as in Q3⁶ (both around +1,200). This appears to be a clear break with the previous five quarters which were mostly weak, as in Q2 (around +450), or negative.

Extremely tentatively, this press evidence from the second half of 2009 is broadly consistent with the TW private sector economy expanding employment by about 2-3,000pa (or about 0.4-0.6%pa), subject to time 'lags' (delays) with the gains. This is a rough central estimate, with a wide range of uncertainty (possibly of thousands, due to unknown omissions. Note, below, gives explanation).



Source: The press as logged by TWRI

A full itemised list of reported job gains and losses is given at the end of this report (in size order).

Note on interpretation of press reports of Job Change (JC), aggregated by TWRI:

This source gives good coverage of market services and manufacturing – together about half the economy. It therefore has important gaps ('omissions'), the three main ones being;

- public service employment growth was never reported in any significant way (1997-2007),
- job losses from small retailers are never captured effectively and
- construction (as with other sources) cannot be recorded at all.

A fourth gap was created through temporary jobs being reported but their demise not being.

TWRI analysis of the long-term series (14 years) has found the JC series typically omitted about 2,000pa job losses (but this is variable). This might be partly explained by the time lags from announced gains to their fruition.

⁵ Oct-Dec

⁶ Jul -Sept 2009.

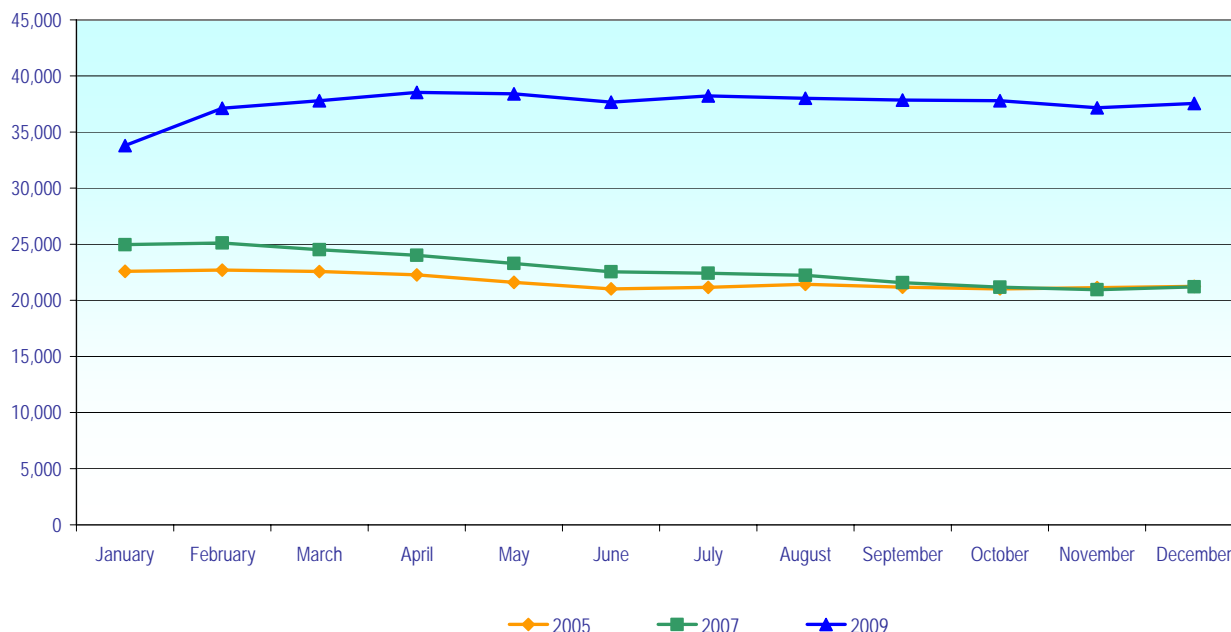
§3: Claimant Unemployment

In Tyne & Wear, claimant unemployment was broadly flat from March to December (graph, below). 'Normal' seasonal patterns would have reduced unemployment over these 9 months (roughly as in 2005, below). Thus **seasonally adjusted claimant unemployment rose slightly (perhaps between 500-1,000)**.

The chart (below) shows comparison with previous 'normal' years such as 2005; that year, claimant unemployment fell by about 1,500 from March-December.

Claimants in Tyne & Wear

2005, 2007, 2009



In 2009, from spring-December, claimant unemployment fell in South Tyneside and, particularly, in Sunderland. Indeed, by January 2010, Sunderland was the only District with lower unemployment than in April (9 months earlier), down over 400 (shown in table, below).

Claimant Unemployment, January 2010

	Number (Apr in brackets)	Rate ⁷ (in Jan)	Change on Year	Change from Apr
Gd	6,456 (6,148)	7.5% (R)	+1,001 (+18.4%)	+308 (+5.0%)
Nc	9,474 (8,691)	7.8% (R)	+1,563 (+19.8%)	+783 (+9.0%)
NT	6,353 (5,882)	6.6% (R)	+1,007 (+18.8%)	+471 (+8.0%)
ST	6,921 (6,637)	10.1% (R)	+988 (+16.7%)	+284 (+4.3%)
Sd	10,793 (11,205)	8.4% (R)	+1,634 (+17.8%)	-412 (-3.7%)
TW	39,997 (38,563)	8.0% (R)	+6,193 (+18.3%)	+1,434 (+3.7%)
NE	90,769 (85,437)	7.5% (W)	+15,111 (+20.0%)	+5,332 (+6.2%)
UK	1,654,025 (1,557,616)	5.1% (W)	+371,380 (+29.0%)	+96,409 (+6.2%)

Note: (R) means residents' rates (by TWRI). (W) means workforce rates (by ONS).

Note: the big rise in claimant unemployment in Tyne & Wear, was immediately prior to April 2009, by almost 13,000 people - in the 6 months from Sept 2008 to March 2009.

The TW claimant unemployment rate has risen 0.9 percentage points (by January) from 7.1% a year ago.

⁷ Rates are TWRI residence-based rates (R), except for the NE and above which are ONS workforce-based rates (W).

In the year to January, unemployment rates rose by over 3.3 percentage points in two wards in Gateshead and one in Sunderland (map, next page). Sunderland had a relatively steep rise in unemployment to spring 2009.

In the Tyne & Wear City Region, since spring 2009 (April), claimant unemployment has risen slightly, by hundreds, in every District or part of the City Region – except Sunderland (down over 400 from April-Jan). The predominance of Nissan has had an impact of its labour market trajectory: this one firm accounted directly for nearly 5% of all jobs in Sunderland (around 4,500), shed about a quarter of its employees and made production cuts of over a third in winter 2008/09 but has since restored some jobs. See TWRI's State of the Tyne & Wear Economy Report for more on economic change, and Weekly News for updates.

Claimant Unemployment in Tyne & Wear City Region since Spring 2009

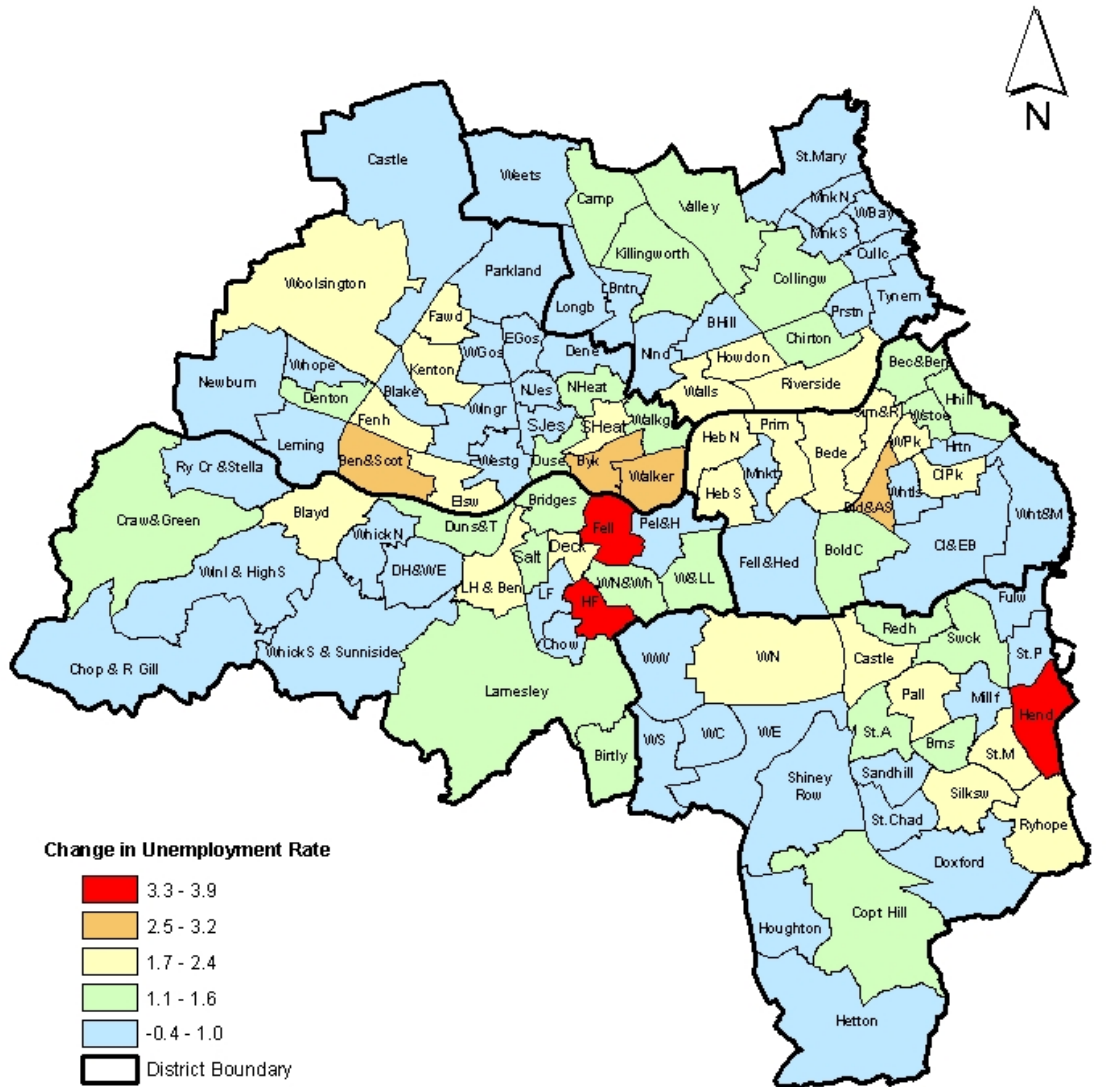
	Change (Apr 09 – Jan 10)
Tyne & Wear	+1,438
Gateshead	+309
Newcastle	+784
North Tyneside	+474
South Tyneside	+284
Sunderland	-413
Co. Durham	-189
Durham ⁸	+143
Northumberland	+572
Northumberland ⁹	+328
Tyne & Wear City Region	+1,909
North East	+5,332
Great Britain	+87,096
United Kingdom	+96,409
Source: ONS (via NOMIS web)	

Over the 9 months period from April 2009 to January 2010, UK claimant unemployment was up over 96,000. This was a 0.3 percentage point increase in the rate (as a proportion of resident working-age population), to 5.1%. The rises in Tyne & Wear was similarly about 0.3 percentage points.

⁸ Chester-le-Street, Derwentside, Durham City and Easington.

⁹ Blyth Valley, Castle Morpeth, Tynedale and Wansbeck.

Change in Claimant Count Unemployment Rates, January 2009 to January 2010



Note: Rates are the number of unemployed as a percentage of the estimated labour force (the economically active population), at mid-2007 (TWRI ests. based on ONS population estimates).

Source: Office for National Statistics, Tyne & Wear Research and Information. Mapped by TWRI, © Crown Copyright, 2009, All rights reserved (Tyne & Wear Research and Information) (Licence No 10002987) February 2010).

0 2 4 8 Kilometers

TYNE & WEAR



RESEARCH AND INFORMATION

Caution: the unemployment rates are those calculated using the 2007 denominators introduced in May 2009. This change map is not comparable with those in the Unemployment monthly before that date.

§4: Unemployment Forecasts

Forecasts of Unemployment in the UK

	2009	2010	Comments
Economic Growth	-4.7%	+1.4%	Growth in 2010 is forecast to be slow. (2½%+ is normal).
Claimant Unemployment	1.63m (Q4)	1.75m by Q4 2010	A rise of 120,000 in 2010. Pro rata TW rise would be about 2,000.

Source: average latest revised UK forecasts from HM Treasury's survey of independent forecasts (Feb.).

It is possible that TW may fare somewhat better than the UK in 2010, as the NE has a relatively large export-sector. The NE's goods exports in Q4 grew a rapid 16% from Q3; very encouraging, but beware probably including a one-off boost due to re-stocking around the world. Raising the region's focus on fast-growing markets, mainly (but not exclusively) in Asia, will help.

The growth of EU economies is still central to NE exports as three-fifths of exports go here. These markets have begun to grow again and are forecast to grow in 2010 (but slowly).

§5: Vacancies numbers;

In Q4, the flow of notified vacancies in Tyne & Wear overall is down by about a third from 2 years ago, and down by about 15% from a year ago (table and graphic, below). The flow has fallen most in North Tyneside and Sunderland (both down about 40% from 2 years ago). Most TW Districts' notified vacancies are down a bit on a year ago, unlike the UK which has been stable.

Summary of Notified Vacancies, by TW District

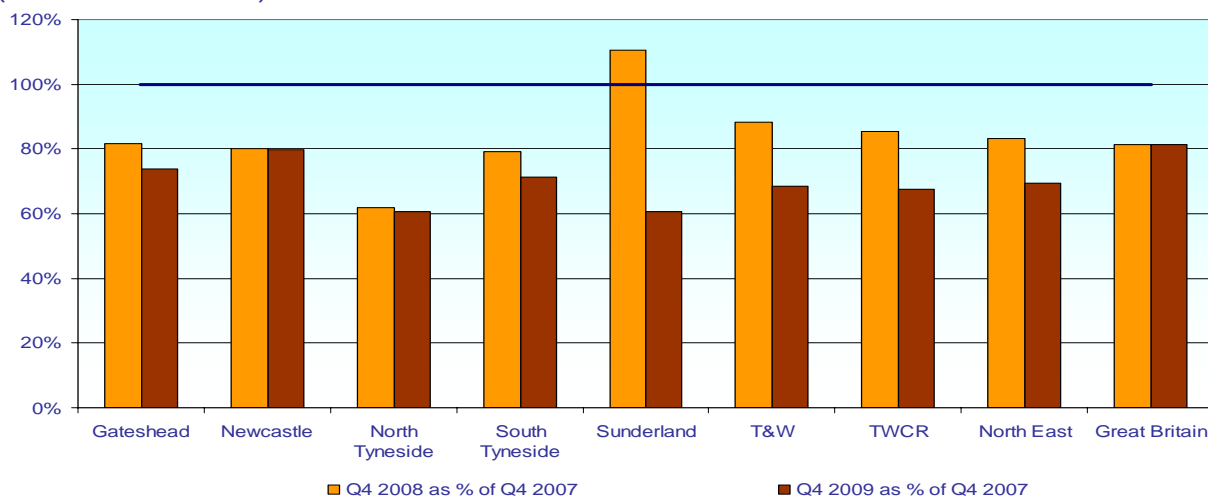
Table 5: Notified vacancies in Tyne & Wear

	2009			2008			2007		
	October	November	December	October	November	December	October	November	December
Gateshead	1,923	1,648	735	2,092	1,767	911	2,611	1,561	1,666
Newcastle	2,257	2,561	1,688	2,248	2,682	1,606	2,944	2,430	2,795
North Tyneside	860	1,291	689	1,034	1,253	614	1,477	1,343	1,872
South Tyneside	685	803	434	771	857	503	1,106	773	811
Sunderland	2,743	2,719	1,537	4,170	4,801	3,756	3,990	4,368	3,160

Source: ONS @ Crown Copyright

Notified Vacancies in Tyne & Wear

Q4 2009 and Q4 2008 compared with Q4 2007
(Base Oct-Dec 2007 = 100%)



Source: ONS

§6: Employment Change by Industry;

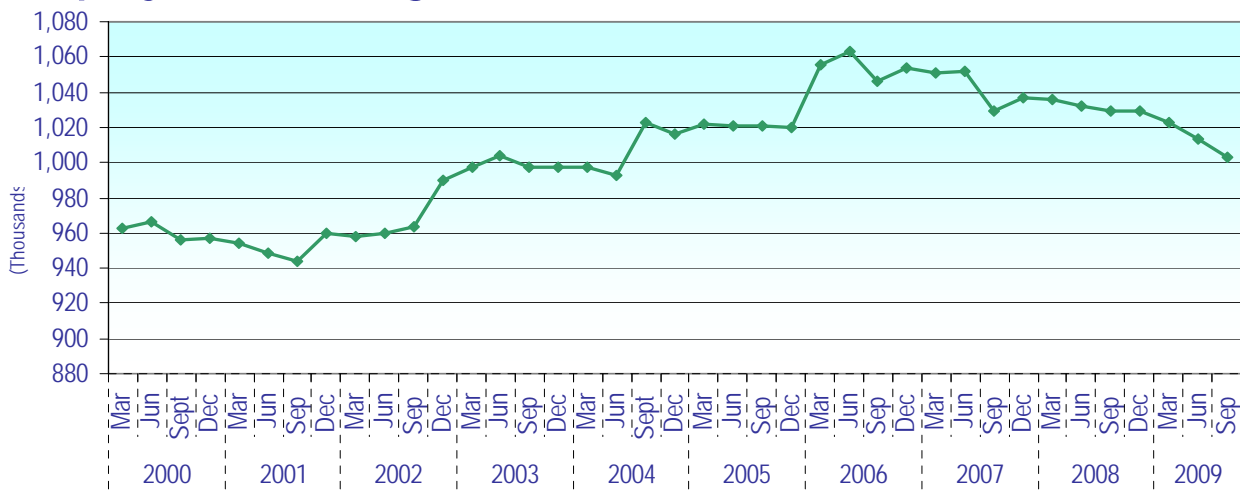
The NE has had slightly slower rates of employment losses than the UK in the year to mid-2009; this *might* reflect the broad structural changes in TW. NE total employees, in the year to June 2009, fell by 1.7% to 1.014m or almost 1 percentage point slower than the UK (where total employees fell by 2.6% to 25.819m).

	North East	UK
Production (C-E)	Down 9,000 (6%) to 131,000	Down 228,000 (8%) to 2.821m
Construction (F)	Up 1,000 (2%) to 59,000	Down 40,000 (3%) to 1.278m
Services (G-Q)	Down 8,000 (1%) to 816,000	Down 437,000 (2%) to 22.137m

The reported growth in construction is surprising; estimating employment in this sector is especially hard (but in the NE was perhaps boosted by Govt stimulus).

Employees in the NE peaked in June 2006, at over 1,060,000 but has fallen about 50,000 (graph, below).

Employment Change; North East



Source: ONS

Caution: This regional short-term employment series (STES) has a history of substantial revisions. It was revised upward in 1999 (after the new ABI in 1998) and the rise at end 2005 appears unreal. TWRI advises that the graph should be regarded as a broad indication, not a precise measure. More detail is available in ONS' monthly publication 'Economic and Labour Market Trends.'

§7 Tables of Local Job Gains & Losses

Summary of job gains and losses announced in the press,
October 1st – December 30st 2009, for Tyne and Wear

District	Gain	Loss	Net
Gateshead	400	93	307
Newcastle	572	457	115
North Tyneside	1194	492	702
South Tyneside	167	385	-218
Sunderland	580	72	508
Unallocated (Districts to be determined)	90	174	-84
Tyne and Wear (Total)	3003	1673	1330

Note: Unallocated gains and losses are usually estimates at County-level of regional change. These numbers have been reduced by TWRI by 350 due to the Jet2 claim of 450 jobs.

TWRI has a database of job gains and losses announced in the press since the beginning of 1996. Listings are available on request by District, industry (2 Digit SIC 80) and cluster. This database and the lists given below, record gains and losses reported in the press.

Cautions: The press tends to under-record net job losses overall (by roughly 2,200pa on average, TWRI estimates by comparison with other sources). For example, particularly notable under-recordings have been numerous small losses from retailing and possibly from the offshore engineering industry. The **construction industry is especially hard to track and measure** (and grew very significantly from about 1999 until 2006). Small firms are not included at all in the data below, since gains of fewer than 10 are not recorded by TWRI (and not generally reported by the press).

Job Gains in Tyne & Wear

(+3,003) announced in the press October 1st – December 31st 2009, for Tyne & Wear)

* means new opening.

Gains	Employer	Ref
1,000 jobs*	Tesco , Quorum Business Park, nr. Longbenton, North Tyneside. (Financial Services. Insurance Call Centre). Tesco received a £2m grant from One North East. It is to base its insurance customer service centre in 100,000 sq ft of space in Quorum Business Park in North Tyneside [near Longbenton]. Tesco signed up to take the 103,256 sq ft building for 15 years, the first 5 years being rent free. Quorum Business Park was relaunched earlier this year after undergoing £180m of development work. Recruitment will take place from 2010 to 2011.	(J 29/10)
350 jobs (temporary)	Nissan , Washington, Sunderland. Car manufacturer. It is re-hiring temporary workers due to the Govt's [£100m] extension of the scrappage scheme, which will cover an additional 100,000 cars.	(J 2/10).
250 jobs	The Listening Company , St James' Gate, Newcastle (Call centre). It has opened a new floor at its Newcastle base as part of its commitment to create 1,000 jobs in Newcastle. It set up base at St James' Gate in October 2008.	(J 25/11)
Up to 120 jobs (temporary)	Spark Response , Follingsby Park, Gateshead (Call centre operator). It is taking on temporary staff for around three months to fulfil Christmas orders for Toys R Us. It is on course to increase turnover by 10% this year.	(J 27/11)
100 jobs	Sage , Great Park, Newcastle (Accountancy software group). It plans to create the customer support jobs at its Newcastle HQ, despite difficult trading conditions. It said it would also continue to focus on managing its costs, after posting a 2% fall in revenues to £242m in the year to September.	(J 3/12)
86 jobs	Executive Care Group , South Shields, South Tyneside.	(J 8/10)

Gains	Employer	Ref
	Care home operator. It is creating 300 jobs with the opening of seven new sites including two in South Shields, South Tyneside and in Stocksfield, Northumberland. It is based in Gateshead. [TWRI estimates 43 job gains at each site]	
80 jobs (by 2011)	Frank Haslam Milan (FHM) , NE base in Gateshead. (Construction). FHM is to create up to 200 jobs [in the NE] by 2011, [est. 80 job gains in TW – Ed.] virtually doubling in size. It has begun work on major long-term housing contracts with partners such as Coast and Country, Housing Hartlepool, South Tyneside Council and Your Homes Newcastle (YHN). FHM has won £3.5m of new-build and refurbishment work with YHN (the city's social housing ALMO) and further work in South Tyneside.	(Sd. Echo 5/11) (J 5/11)
80 jobs	Sainsbury's , Silksworth, Sunderland. (Retailer). It was granted permission to redevelop its store at Silksworth in Sunderland. Plans include an extra 33,000sq ft of selling space, a new restaurant and 69 parking spaces.	(Sd. Echo 9/10)
80 jobs	De La Rue , Team Valley, Gateshead (Commercial banknote-printer). Jobs to be created after winning a large government contract. [See local stories for details]	(J 25/11)
75 jobs	Convergys , Quorum Business Park, nr. Longbenton, North Tyneside (US call centre firm). It is creating additional jobs and taking up 10,000 sq ft additional space.	(J 11/11)
60 jobs [est.]	Fat Buddha , Newcastle (Restaurant chain). Around 180 jobs are set to be created with the opening of chain of restaurants in Newcastle, Leeds and Harrogate. Utopian Leisure received an £8m loan from Barclays to fund its expansion. [Est. 60 jobs in Newcastle – Ed.]	(J 3/12)
50 jobs	DCS Cleaning , Camperdown Industrial Estate, North Tyneside. (Business Services. Cleaning). The North Tyneside cleaning firm has invested over £20,000 in a drive for expansion after re-launching itself as DCS Multiserve, a full facility management business.	(J 3/11)
50 jobs	Zytronic , Blaydon, Gateshead (Electronics manufacturer). It plans to add around 50 jobs to its 190-workforce at its Blaydon plant. It has won a deal to supply its ZYBRID touch-screens to Coca-Cola for its dispensing machines in 2010. Its revenues rose 8.2% in the year to September.	(J 10/12)
50 jobs	ScS , Sunderland (Furniture retail chain). It has taken on extra staff at its distribution department and is also considering opening more stores, as it moves back towards profit. It cut around 500 retail jobs in the past two years. ScS is owned by [US] private equity group Sun European Partners.	(J 9/12)
50 jobs	IDS , Boldon, South Tyneside (Manufacturer of medical diagnostic kits). New jobs being created at its HQ. Its pre-tax profits rose 188% to £4.6m in the six months to September, compared with a year ago. Global demand for its pioneering products, used to detect diseases, soared.	(Sd. Echo 1/12)
Up to 50 jobs (by 2013)	Cintra HR and Payroll Services , Gateshead (Payroll and HR software and services). It is creating up to 50 jobs (doubling its size) by 2013.	(J 19/11)
40 jobs	Express Engineering , Team Valley, Gateshead (Engineering) It secured a £750,000 contract to provide pressure-tested subsea eqpt. to the marine sector. It recently expanded its Team Valley production site with support from an SFI grant from One NorthEast.	(J 10/11)
40 jobs	Houghton International , Walker, Newcastle (Rail traction-motor company). It looks to grow turnover by two-thirds to £5m. It has taken on a 10,000sq ft warehouse, close to its current site, doubling production of its repair business. It also expects to invest in a second 10,000sq ft facility in the next 12 months. This follows a period of strong growth in both the domestic and international markets.	(J 25/11)
40 jobs*	Wetherspoons , [corner of Westgate Rd. and Grainger St.], Newcastle (Pub. Trading as Lloyd's Bar One.). This is part of the group's plan to open 250 pubs nationally over the next five years, creating 10,000	(J 3/12)

Gains	Employer	Ref
	jobs.	
40 jobs*	Go Outdoors , Denton, Newcastle. (Retail. Outdoor clothing). The Sheffield-based outdoor clothing chain, is opening a new superstore in West Denton Way, Newcastle.	(J 4/11)
30 jobs*	Schuh , Crowtree Mall, Sunderland (Footwear retailer). Jobs for new store.	(Sd Echo 14/12)
30 jobs	Namco Funscape , MetroCentre, Gateshead (Leisure). New jobs as the Japanese company adds to its 70-strong workforce at the MetroCentre, as part of its plan to expand into the corporate hospitality market. It has opened a complex at the Qube. The 38,000sq ft redevelopment includes 5 bowling lanes, a dodgem car track, pool tables, three conference rooms, a coffee shop and children's soft play-area.	(J 24/11)
25 jobs*	5th Generation Technologies , Sunderland. (Mechanical Engineering. 'Business Intelligence Tools Manufacture'). The Chennai (India)-based firm is setting up a Sunderland-base after it received £200,000 from One North East to support the development of new products. [An example of 'Advanced Manufacturing', which Sunderland is seeking.]	(J 28/10)
20 jobs	Fuda-Hobart Rose , North Shields, North Tyneside. (Other Manufacturing. Furnishings). With a manufacturing operation in China, its stated reasons for the expansion were import costs and increased freight costs, but mainly the falling pound.	(J 26/10)
20 jobs	Autopod Solutions , Newcastle. (Construction). The Newcastle-based company, has started building an 8-storey tower at Hodgson's [Toyota] car dealership site at Blaydon, Gateshead.	(J 30/10)
20 jobs (in 2010)	Fendor , Gateshead (Specialist glass supplier [for the construction sector]). It expects to grow its revenues by a third to £6m.	(J 21/12)
15 jobs	JW Rae Bakers , Sunderland (Food Production). Aspin Bakery is to create 15 jobs at JW Rae Bakers in Sunderland, after rescuing it from administration. Aspin is part of Monument Foods Group	
15 jobs*	North East Convenience Stores , Wallsend, North Tyneside. (Retail). The Blyth, Northumberland based firm has created 15 jobs at the former Woolworth store in Wallsend, North Tyneside, as it pilots its 'Well Worth It' brand.	(J 17/10)
15 jobs*	Lidl , Springwell, Sunderland (Retail). Jobs created with the opening of a new supermarket.	(Sd Echo 16/11)
14 jobs Expansion? Or re-furb?	Ocean Lounge bar , South Shields, South Tyneside. (Hotels & catering. Café and Bar).	(Sh. Gaz 21/10)
14 jobs (in 2010)	Amec , Wallsend, North Tyneside (Consultancy and engineering services). New jobs for its nuclear division, as it sees growth in the sector. Amec's Power and Process Europe division, which currently employs 12 people, is also in the process of moving to a new office in North Shields.	(J 1/12)
12 jobs	Jules B , Jesmond, Newcastle. Upmarket specialist clothes retailer. It has expanded with extra jobs in its new online division as sales grew strongly.	(BBC Look North 6/10)
10 jobs*	Dene Group , Newcastle (Film Production). It plans to create 10 jobs this year in its new communication division.	(J 21/10)
10 jobs	St James Security , Gateshead. (Business Services. Security). It plans to double its workforce to 60 at its Gateshead base and recruit over 500 security jobs across the UK by 2011 [est. 10 jobs in TW – Ed.]. Its US parent company, IPC International, has invested £4.2m in the business since acquiring it in 2005. It has since been re-branded IPC Security.	(J 6/11)
10 jobs (in 2010)	Astley Signs , Gateshead (Manufacturer of illuminated corporate signs). It is looking to increase sales by 10% to £11m.	(J 23/12)
10 jobs (by	JT Roofing and Building Maintenance , South Tyneside	(J 18/12)

Gains	Employer	Ref
2015)	(Builder). It has won a number of contracts in the public sector, including a number of social housing projects.	
10 jobs	Cellular Solutions (North East) Ltd , Ferry Boat House, Ferry Boat Lane, Sunderland (Telecoms firm). New jobs as it expands into new (£725,000) premises. It now has 24 staff.	(J 30/12)
5 jobs	Velocity , Sunderland (Road repair company). It is expanding after winning a council grant. It has taken on 2 staff and is recruiting for a further 3 people. It builds, hires out and sells road repair equipment to local authorities and the super-contractors who manage highways maintenance on behalf of councils.	(J 30/12)

* means new opening

Job Losses in Tyne & Wear

(1,673 announced in the press)

Losses	Employer	Ref
350 jobs	South Tyneside Council, South Tyneside. (Public Admin. Local Authority). It is to shed up to 350 jobs [est. about 5%] over the next two years. The council budget is set to be cut by an estimated £21m-£23m over the period.	(Sh. Gaz 23/10)
263 jobs*	Twinings, North Shields, North Tyneside. (Food and Drink. Tea-packaging). One third of the production at Twinings will move abroad [to Poland] while the remaining work will go to its factory at Andover [in Hampshire].	(www.times online .co.uk 3/11 & J 3/11)
189 jobs*	National Grid , Quorum Business Park, North Tyneside. Energy supplier. It is making 189 people redundant after confirming the closure of its base on Quorum Business Park [in North Tyneside]. [On Sept 12, The Journal had already reported the company wanted to cut initially 80 jobs from the total workforce – Ed.]	(J 9/10)
167 jobs	BAE Systems, Scotswood, Newcastle. (Mechanical Engineering). BAE are to shed another 167 jobs (on top of the 50 job cuts announced previously) at their armoured vehicle plant in Newcastle. This takes the total job losses to 217, a third of the total workforce. BAE said that, after a further review following the MoD's publication of its armoured fighting vehicle sector strategy, the present size of its business did not "match" its predicted orders.	(N. Echo 30/10)
120 jobs*	North East Bakery , Newburn, Newcastle (Baker and retailer). It has gone into administration with the loss of 120 jobs. The Newcastle bakery blamed poor trading conditions for the collapse. [It has 13-strong chain of Nichols-branded shops and a factory in Newburn – Ed.]	(J 24/12)
100 jobs (by end 2010)	Lloyds Banking Group , Tyne & Wear (Finance). It is cutting 5,000 jobs within its group operations, insurance and retail divisions by the end of 2010. [TWRI estimates that this will equate to the loss of 100 jobs in Tyne and Wear-Ed]	(J 11/11)
74 jobs	Royal Bank of Scotland (RBS), Tyne and Wear. (Banking). [The Journal states 3,700 UK jobs will be lost and TWRI estimates this will equate to 74 jobs in TW]	(J 3/11)
63 jobs*	Scottish and Newcastle, Dunston, Gateshead. (Food and Drink. Brewery). It is to close its brewery in Dunston, Gateshead, in 2010 with the loss of 63 jobs. The company, now part of Heineken, wants to move production to its John Smith's plant in Tadcaster, West Yorkshire.	(J 15/10)
50 jobs	Rolls-Royce , Pallion, Sunderland. Aero-engine manufacturer firm. It is to close the site within five years and transfer production to a new facility to be built in the NE. Numbers at the new plant would be about 350, compared to 400 at present. Staff have been told the move would involve a longer working week (by five hours), for no extra pay.	(Sd. Echo 1/10)
40 jobs	OneNorthEast, Newburn, Newcastle.	(J 21/10)

Losses	Employer	Ref
	(Public Admin. Regional development agency). It has cut 40 jobs, through natural wastage and voluntary redundancy and now has about 400 staff.	
40 jobs*	Ambic, Newcastle. (Other Manufacturing. Furniture for the public sector). It has moved to bigger premises (24,000 sq ft factory) in Chester-le-Street, Co. Durham, which allows the company to bring in new machinery to increase production. The company currently employs 40 staff and has a turnover of £2m.	(29/10)
40 jobs	British Engines Ltd , Walker, Newcastle. Manufacturer of offshore oil equipment. It has been affected by the global downturn.	(J 1/10)
25 jobs*	Bell Trucks , Longbenton, North Tyneside (Car dealerships). Job losses with the closure of two car dealerships. (It moved to selling cars in 2006:a Mitsubishi dealership nr its Longbenton HQ and, in 2008, a Suzuki dealership in East Boldon.)	(J 27/11)
25 jobs*	Bell Trucks , East Boldon, South Tyneside (Car dealerships). Job losses with the closure of two car dealerships. (It moved to selling cars in 2006:a Mitsubishi dealership nr its Longbenton HQ and, in 2008, a Suzuki dealership in East Boldon.)	(J 27/11)
20 jobs	John Lewis , Eldon Square, Newcastle (Call centre jobs). The retailer has revealed it will not open a call centre in Newcastle. It has picked Manchester instead for the 240 jobs it planned to create. It is closing all call centres run in all of its 25 stores, with the loss of 720 jobs. It employs 825 people at its Eldon Sq. store in Newcastle city centre.	(J 1/12)
20 jobs*	The Inta Group , Gateshead (Leisure). It has ceased trading, with the loss of 20 jobs. It sold all its assets and brands to Your Golf Travel. They include 3D Golf, Bill Goff Golf Tours, Longshot Golf Holidays and 4golf.com.	(J 24/12)
17 jobs*	Blagdon Pump Holdings Ltd, Washington, Sunderland. (Mechanical Engineering. Pump Manufacturing). It is relocating to Ireland with the loss of 17 jobs.	(J 12/10)
15 jobs*	First Quench Retailing (FQR) , Newcastle (Retail). FQR has gone into administration, closing 373 shops. [9 outlets are to close in TW with the loss of around 45 jobs. 15 in Newcastle, 15 in North Tyneside, 10 in South Tyneside and 5 in Sunderland – Ed.]	(Sh. Gaz 18/11)
15 jobs*	First Quench Retailing (FQR) , North Tyneside (Retail). FQR has gone into administration, closing 373 shops. [9 outlets are to close in TW with the loss of around 45 jobs. 15 in Newcastle, 15 in North Tyneside, 10 in South Tyneside and 5 in Sunderland – Ed.]	(Sh. Gaz 18/11)
12 jobs (est.)	GB Building Solutions , North East (Building firm). Jobs cuts from its 76 NE workforce. The Surrey-based building firm saw its turnover fall 5.8% to £195.2m in the year to June. [Its Newcastle office is at Balliol Business Park (West) in Newcastle.]	(J 12/12)
10 jobs	Surgo Construction , Newcastle (Building firm). Job cuts through natural wastage and redundancies. Its sales fell [by 13%] from £52m to £45m over the last year. [This firm, previously known as Bowey, had had major public contracts, eg Gosforth High School, 2003 – Ed.]	(J 13/11)
10 jobs*	First Quench Retailing (FQR) , South Shields and Jarrow, South Tyneside (Wine stores). Job cuts with the closure of two wine stores (trading as The Local) in South Shields and Jarrow.	(Sh. Gaz 18/11)
10 jobs	Blacks Leisure , [Millets and O'Neill's] shops Gateshead. Outdoor / leisure retailer. It has shops in Gateshead and the MetroCentre. It is closing 89 of its stores and cutting 500 jobs. Unexpected trading conditions meant that bank would be unable to meet the terms of its lending agreements. [TWRI assumes 25 job losses in the North East as five stores in the NE; with 10 in Gateshead]	(J 1/10 and Dailymail online 30/09)
5 jobs*	First Quench Retailing (FQR) , Sunderland	(Sh. Gaz

Losses	Employer	Ref
	(Retail). FQR has gone into administration, closing 373 shops. [9 outlets are to close in TW with the loss of around 45 jobs. 15 in Newcastle, 15 in North Tyneside, 10 in South Tyneside and 5 in Sunderland – Ed.]	18/11)
5 jobs	Blacks Leisure , (Millets and O'Neill's shops), Newcastle. Outdoor / leisure retailer. It is closing 89 of its stores and cutting 500 jobs. Unexpected trading conditions meant that bank would be unable to meet the terms of its lending agreements. It has also has NE stores in Durham and Hexham. [TWRI assumes 25 job losses in the North East; 5 in Newcastle and 10 in Gateshead].	(J 1/10 and Dailymail online 30/09).

* means closure.

Potential Job Gains in Tyne & Wear

Gains	Employer	Ref
3,000 jobs [est.]	The Government's 'Future Jobs Fund' is £1bn aimed to create a total of 150,000 jobs. The money is for those aged 18-24, or those living in areas with particularly high rates of unemployment. Local authorities, social enterprises and charities will be able to bid for the creation of jobs. [TWRI estimates out of the 150,000 jobs to be created 3,000 (2%) could be created in Tyne and Wear] (DWP Guide to Future Jobs Fund).	(J 09/11)

Potential Job Losses in the Tyne & Wear

Losses	Employer	Ref
250 jobs* (Either in Newcastle or Manchester)	John Lewis . Newcastle city centre. (Call centre (SIC code to Transport & Communication, if the operation is a separate local unit from the retailer)). It is to close all its call centre operations in each of its 25 branches in the UK, with the loss of 720 jobs. It plans to open two central call centres, one in Glasgow and the other in either Newcastle or Manchester, employing a total of 500 staff. It could create around 250 jobs in Newcastle. The group employs 825 staff at its Eldon Sq. store in Newcastle.	(J 16/10)
Up to 100 jobs	Hashimoto , Boldon, South Tyneside (Car part manufacturer). It is understood to have started a 30-day consultation period over redundancies. It employs over 400 people. [See local economy for further details also for Nissan's longer Dec. shut-downs]	(Sh. Gaz 12/12)
20 jobs	Inta Group , Gateshead. (Transport & Communications. Tour operator for golfers). It is preparing to go into administration.	(J 28/10)

Job Gains in the NE

Gains	Employer	Ref
400 jobs*	Tesco, Peterlee, Sedgefield, Co. Durham . (Retailer). It is to create 400 jobs as it plans to open a store at the former site of East Durham College in Peterlee.	(Sd. Echo 29/10)
200 jobs	JDR Cable , Hartlepool, Teesside (Cable manufacturer). New jobs after winning a £33m contract. It will supply 200km of cabling for the first phase of the London Array [huge wind turbines] development [in the Thames estuary].	(J 17/12)
100 jobs	Alliance and Leicester, Thornaby, Stockton, Teesside . (Banking). It is moving 100 jobs to its base in Thornaby, Teesside after closing its Leicester base as part of a major restructure.	(J 15/10)
86 jobs	Executive Care Group , Stocksfield, Tynedale, Northumberland. Care home operator. It is creating 300 jobs with the opening of seven new sites including two in South Shields, South Tyneside and in Stocksfield, Northumberland. It is based in Gateshead. [TWRI estimates 43 job gains at each site]	(J 8/10)
50 jobs	Garlands, South Shields . (Contract Call centre). It is creating 50 jobs after securing business	(J 20/10)

	with mobile phone network 3. Garlands currently employs 2,000 people in North East call centres.	
25 jobs*	Singletouch , Ashington, Wansbeck, Northumberland. (Operational software). New jobs as it opens a new European HQ. The US firm builds operational software for companies which service large oil and gas projects.	(J 17/12)

* means new opening

Job Losses in the NE

Losses	Employer	Ref
1,700 jobs*	Corus , Redcar, Teesside (Steel plant). Job losses as it prepares to close its steel plant in January 2010. [The plant is being "mothballed", leaving open the possibility of its re-opening, if the owners, Tata Steel, based in India, so choose. Nevertheless, the more months the plant is closed, the more the skilled workforce will have disappeared and become difficult to re-employ – Ed.] Late news: It has agreed to extend operations up to the end of February.	(Sd Echo 4/12)
200 jobs	Esh Group , Derwentside, Co. Durham (Construction and civil engineering group). It cut 200 jobs [in winter 2008/09] in preparation for its last financial year.	(J 11/11)
100 jobs	Ebac Ltd, Bishop Auckland, Co. Durham. (Mechanical Engineering. Coolers and dehumidifier manufacturer). It has cut 100 jobs over the past two years.	(J 4/11)
16 jobs*	ANTnano , Sedgefield, Co. Durham (Manufacturer of air monitoring equipment). It has collapsed with the loss of its 16-strong workforce. [It has headquarters in Sedgefield, with an additional office in Sunderland.] The firm was spun out of Sunderland University and was made up of almost entirely of North East PhD graduates. Trading of its shares was suspended due to a major cash flow problem. It is hopeful of winning the £500,000 funding needed to resuscitate the business by the end of January.	(J 04/01)
10 jobs	Blacks Leisure , Hexham (Northumberland) and Durham Outdoor / leisure retailer. It has [Millets and O'Neill's] shops in Newcastle, Gateshead, Hexham, MetroCentre and Durham. It is closing 89 of its stores and cutting 500 jobs. Unexpected trading conditions meant that bank would be unable to meet the terms of its lending agreements. [TWRI assumes 25 job losses in the North East; 5 in Newcastle and 10 in Gateshead]	(DailyMail online 30/09 and J 1/10).

* means closure.

Potential Job Losses in the NE

Losses	Employer	Ref
400-600 jobs	Northumberland County Council (NCC) , Morpeth, Northumberland (Local Government). Jobs could be lost as it seeks to cut up to £30m in this current year, 2009/10. 800 jobs have already been cut this year. NCC currently employs around 8,500 people.	(J 21/11)