

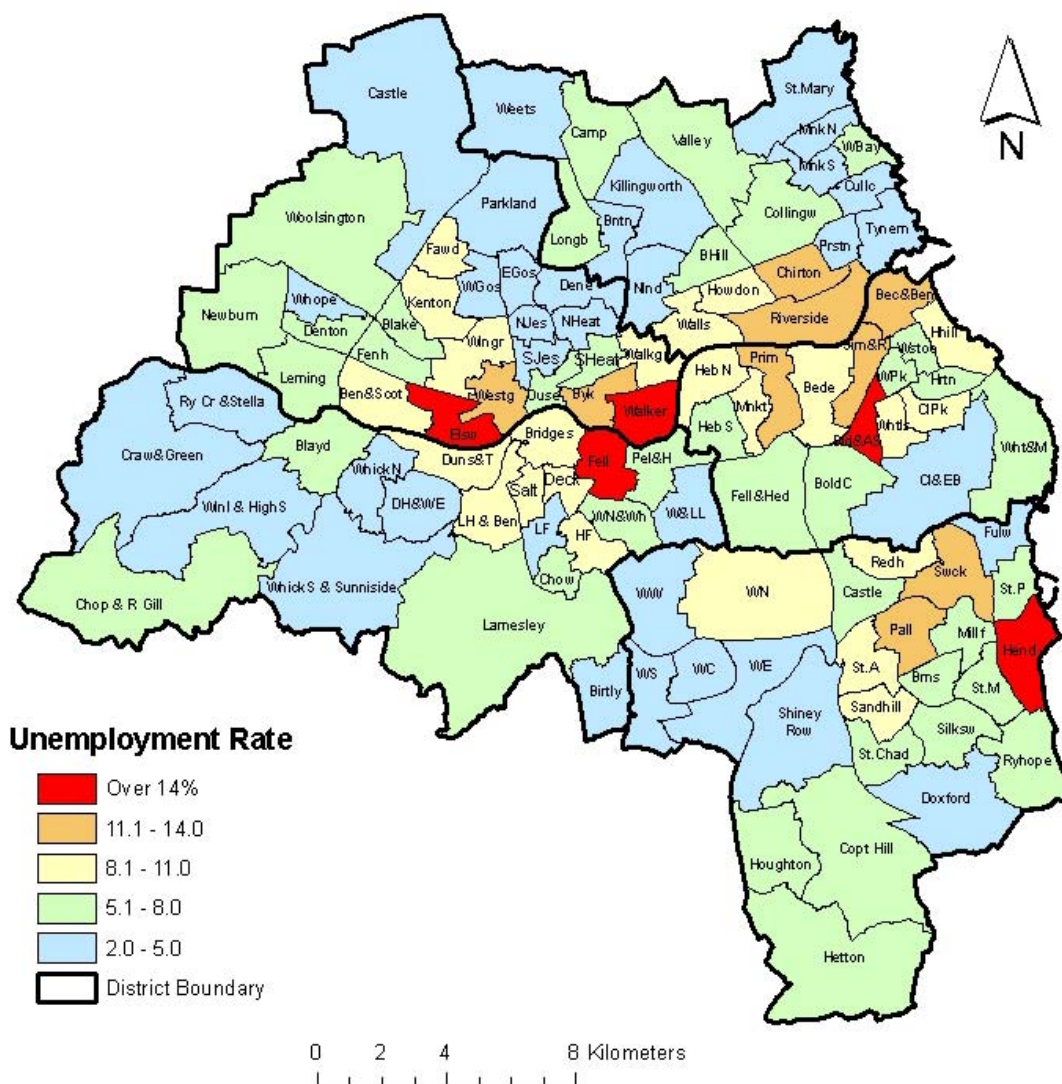
Maps of Unemployment in Tyne & Wear: October 2010



Published: November 2010
EU10/11b.

CLAIMANT COUNT UNEMPLOYMENT

Claimant Count Unemployment Rates, October 2010



Note: Rates are the number of unemployed as a percentage of the estimated labour force (the economically active population), at mid-2007 (TWRI ests. based on ONS population estimates).

Source: Office for National Statistics, Tyne & Wear Research and Information. Mapped by TWRI, © Crown Copyright, 2009, All rights reserved (Tyne & Wear Research and Information) (Licence No 10002987) (Nov. 2010).

TYNE & WEAR

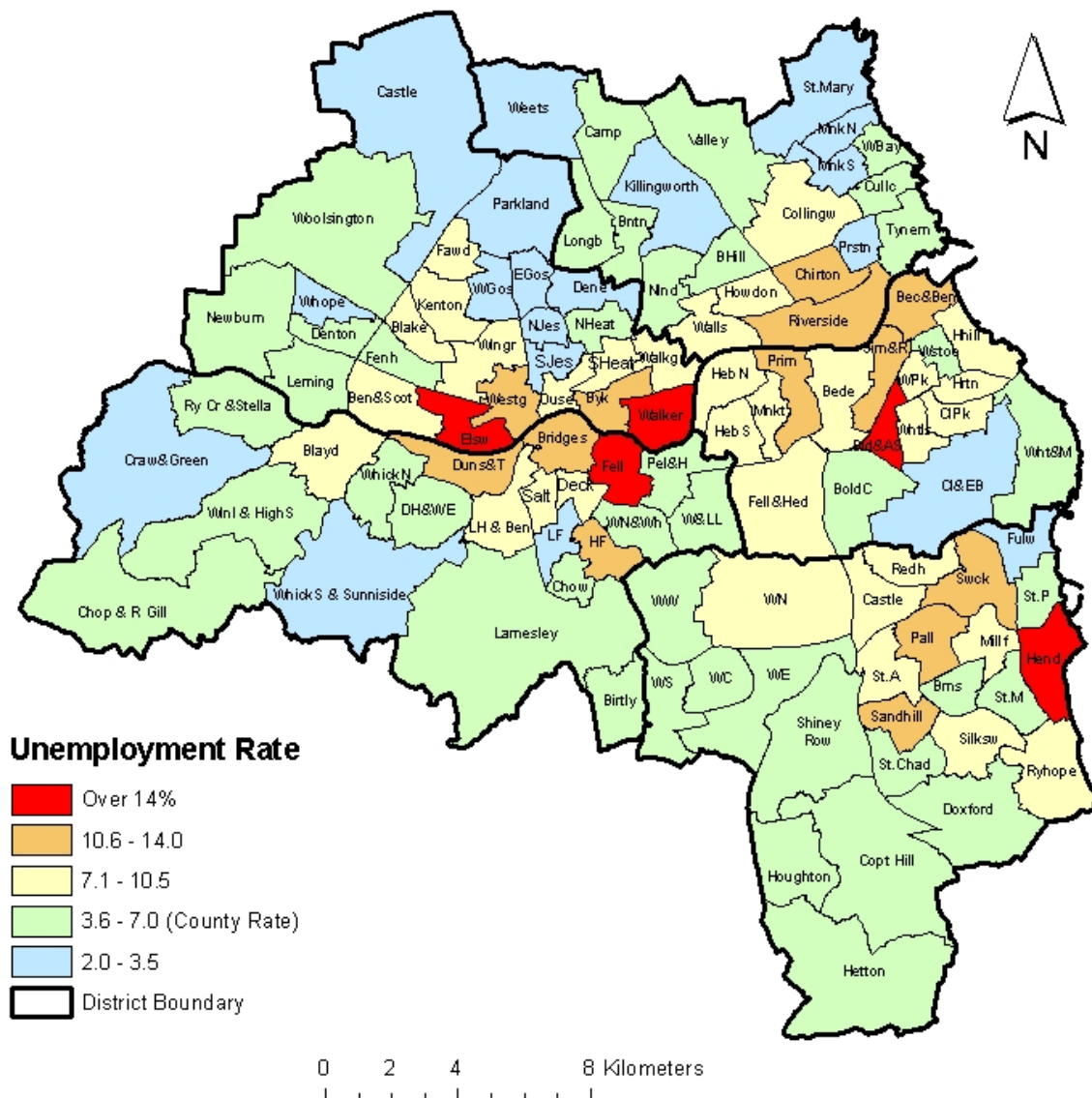


RESEARCH AND INFORMATION

TYNE & WEAR RESEARCH AND INFORMATION (TWRI)
Provincial House, Northumberland Street, Newcastle Upon Tyne. NE1 7DQ
Tel: (0191) 277 1912, Fax: (0191) 277 1911
E-MAIL: twri@twri.org.uk
WEBSITE: www.twri.org.uk

Supported jointly by Cities of Newcastle and Sunderland and the Metropolitan Boroughs of Gateshead, North Tyneside and South Tyneside

TWRI



Note: Rates are the number of unemployed as a percentage of the estimated labour force (the economically active population), at mid-2007 (TWRI ests. based on ONS population estimates).

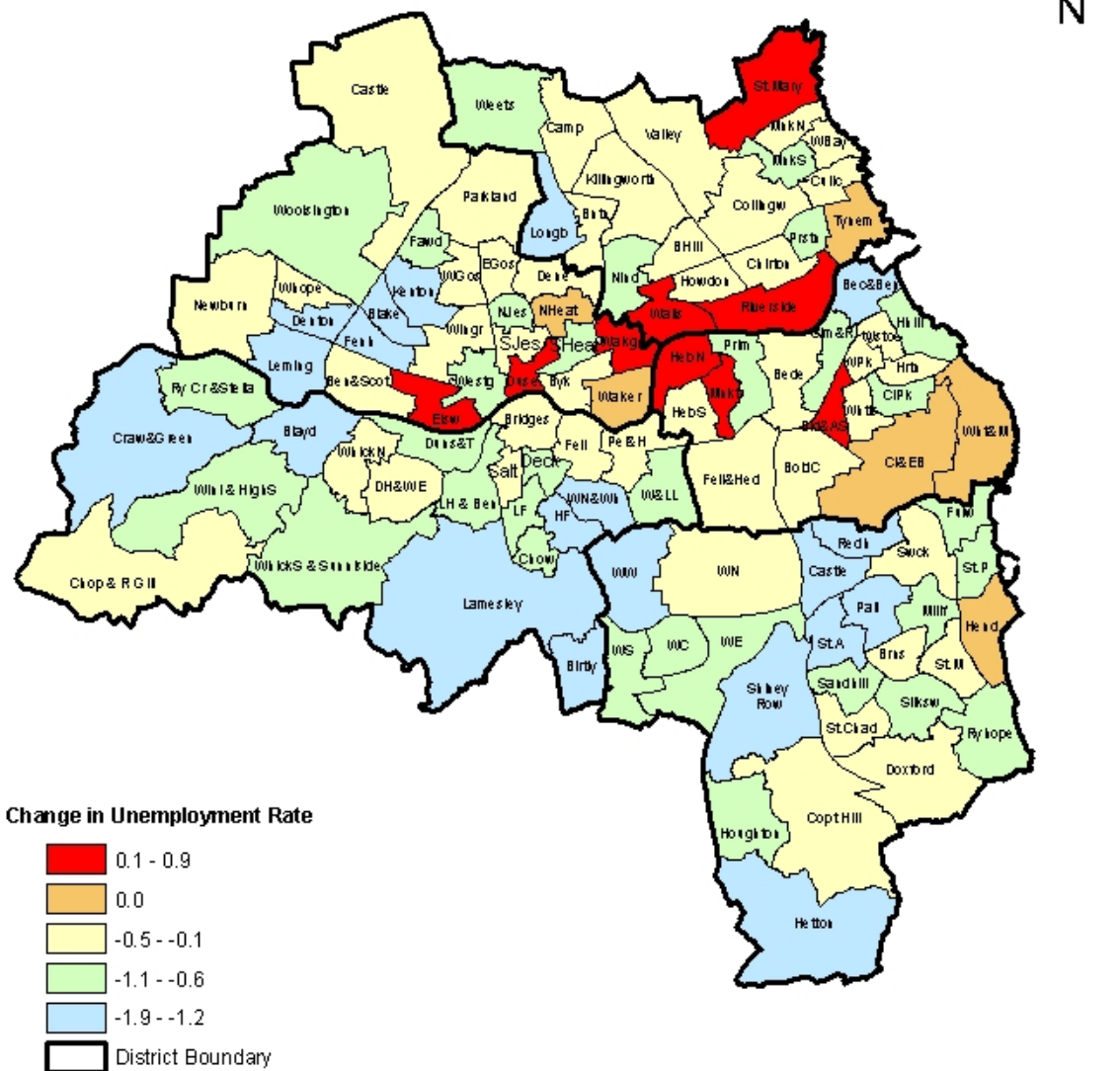
Source: Office for National Statistics, Tyne & Wear Research and Information. Mapped by TWRI, © Crown Copyright, 2009, All rights reserved (Tyne & Wear Research and Information) (Licence No 10002987) (Nov. 2010).

TYNE & WEAR



RESEARCH AND INFORMATION

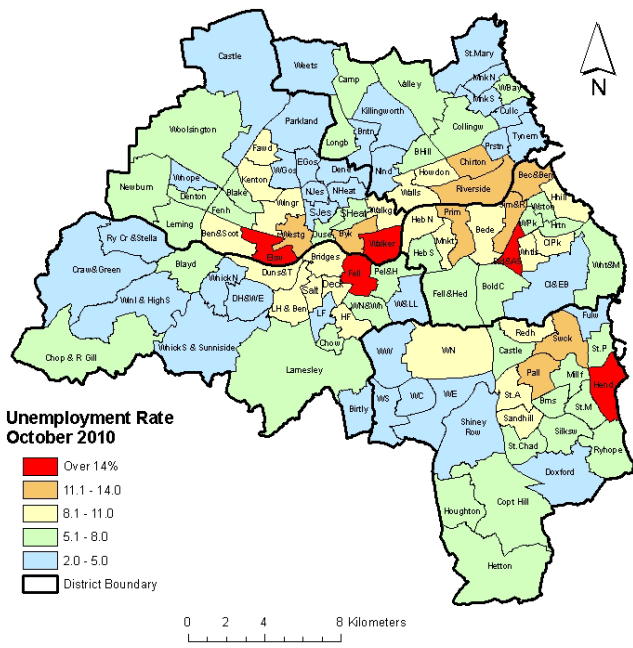
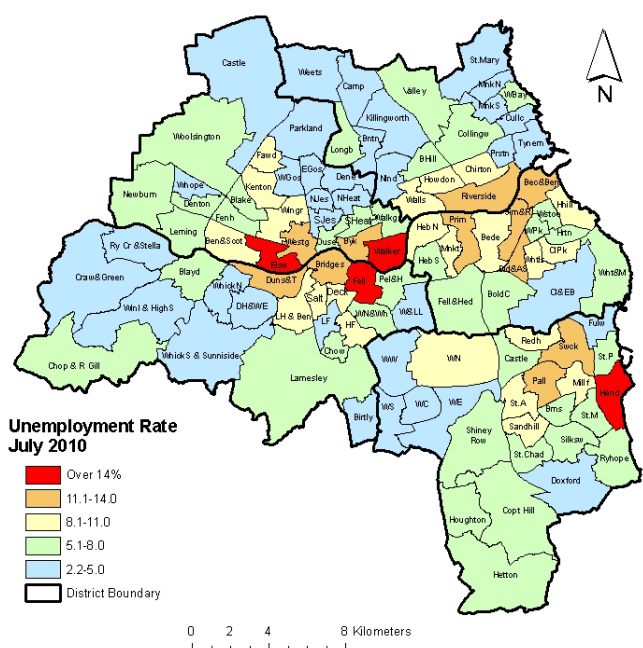
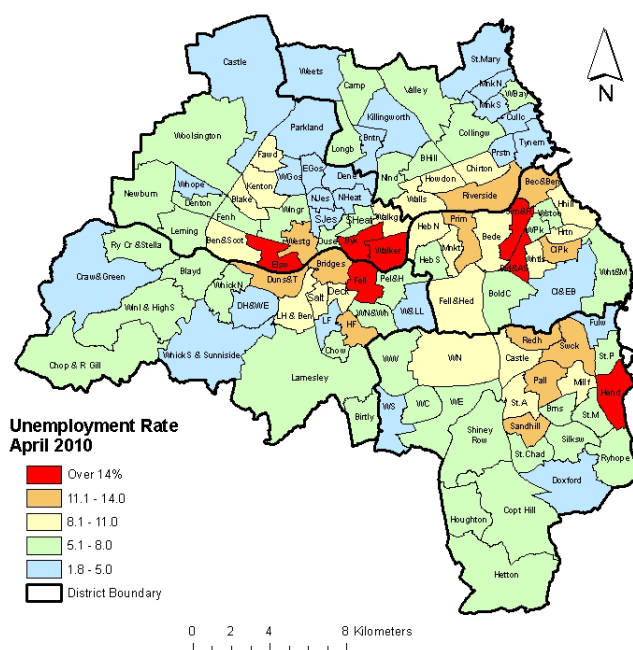
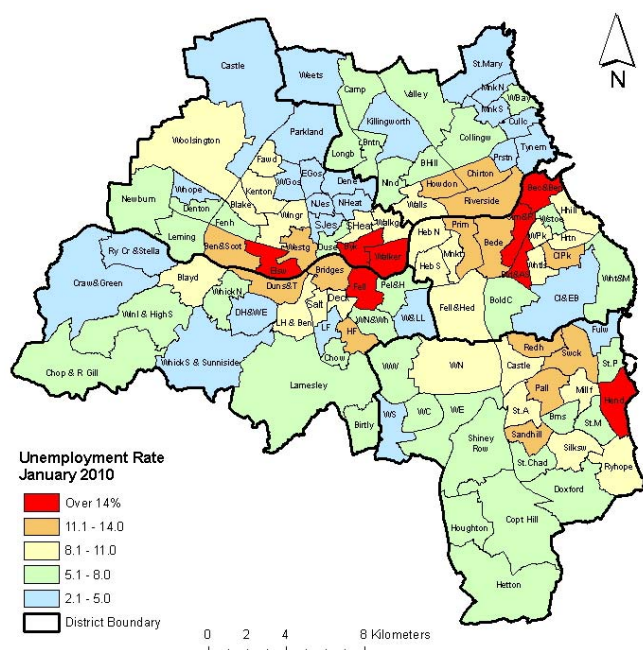
Change in Claimant Count Unemployment Rates, October 2009 to October 2010



Note: Rates are the number of unemployed as a percentage of the estimated labour force (the economically active population), at mid-2007 (TWRI ests. based on ONS population estimates).

Source: Office for National Statistics, Tyne & Wear Research and Information. Mapped by TWRI, © Crown Copyright, 2009, All rights reserved (Tyne & Wear Research and Information) (Licence No 10002987) Nov. 2010).

Claimant Count Unemployment Rates January 2010 to October 2010



Note: Rates are the number of unemployed as a percentage of the estimated labour force (the economically active population), at mid-2007 (TWRI ests. based on ONS population estimates).

Source: Office for National Statistics, Tyne & Wear Research and Information. Mapped by TWRI, © Crown Copyright, 2009, All rights reserved (Tyne & Wear Research and Information) (Licence No 10002987) (October 2010).