

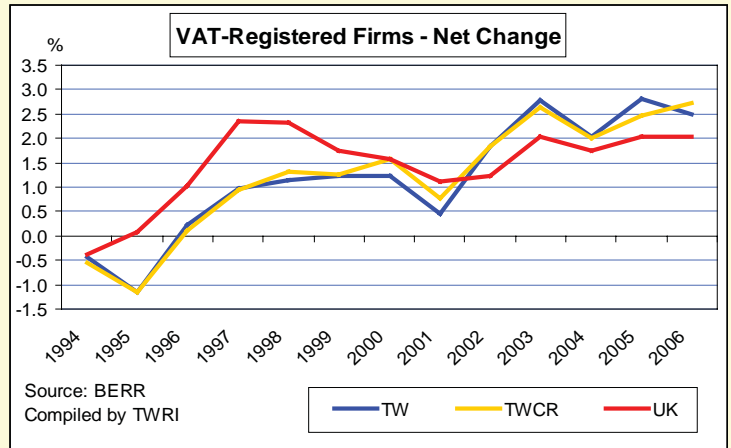


## VAT-Registered firms in TW City Region up record 2.7% in 2006

In 2006, the number of VAT-registered firms in TW City Region grew by a record 2.7%, and in Tyne & Wear grew by 2.5% (compared with 2% in the UK) – according to new data released by DBERR. This is the fifth year in a row in which numbers have grown faster in TW than in the UK. Only in 2003 and 2005, in the last dozen years, has the growth in TW been stronger than +2.5%. The TW growth in 2006 was equal to the NE (2.5%).

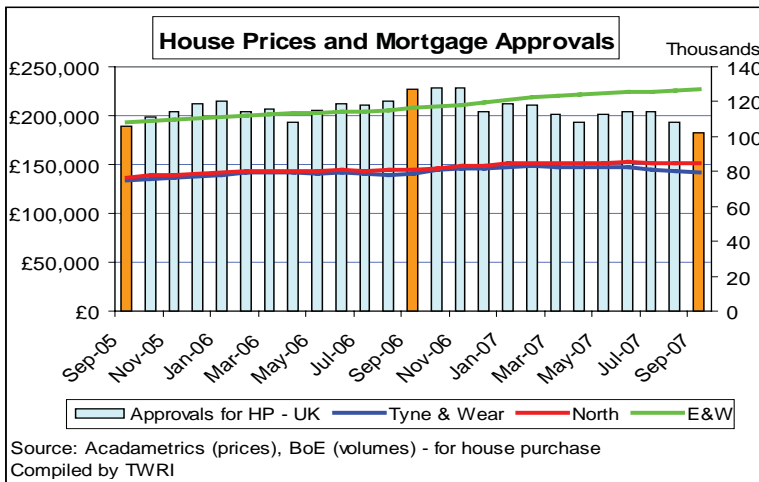
The Rest of the City Region (RoCR) adds strength to Tyne & Wear’s business base. In 2006, the number of firms in RoCR grew by about 3%. The RoCR complements TW’s 18,000 firms with about 11,000 more.

**TWRI** is working on a detailed analysis of VAT firms, covering the City Region (due around Christmas).



## Housing Market Begins to Turn

Since the summer, nationally, the housing market has begun to turn - as shown by a one-fifth drop in the volume of sales, and a marked slowdown in prices (shown in the graphic). In Tyne & Wear, house prices have fallen since February 2007, by 4%.



In the North region [i.e. NE plus Cumbria] house prices have fallen each month since June. The fall is only about ½% over 3 months, but it is part of (and faster than) a wider pattern of falls across all three northern regions of England. [TWRI reported the substance of this NE story, with a table, in the first week of September, in Weekly News – two months before the Financial Times.]

National forecasts are for flat house prices at least into 2008: both the RICS [Royal Institution of Chartered Surveyors] (in late September) and the Nationwide Building Society (in November) forecast flat prices for the next year.

Capital Economics (the consultancy headed by economist Roger Bootle), has gone further, forecasting a -3%pa fall in the UK in 2008 and again in 2009. In the Northern region, it forecasts annual falls of – 4 to -5%pa (J 31/10). [capitaleconomic.com](http://capitaleconomic.com)

Caution: some caution should be attached to all these house price estimates (by Acadametrics, who have been commissioned by the Financial Times), especially for small areas. Nevertheless, **TWRI** believes they are of good quality because they are a) based on all sales, as recorded by the Land Registry and b) are mix-adjusted .

**Tyne & Wear Research and Information**

1st Floor Provincial House  
 Northumberland Street  
 Newcastle upon Tyne.  
 NE1 7DQ



Tel: 0191 277 1919 Fax: 0191 277 1911  
 email: [twri@twri.org.uk](mailto:twri@twri.org.uk)

## Total International Migration (TIM) 1996-2006

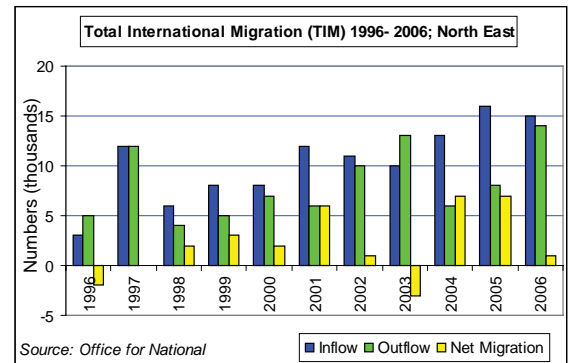
Total International Migration (TIM) 1996-2006; North East			
	Inflow	Outflow	Net Migration
1996	3,000	5,000	-2,000
1997	12,000	12,000	0
1998	6,000	4,000	+2,000
1999	8,000	5,000	+3,000
2000	8,000	7,000	+2,000
2001	12,000	6,000	+6,000
2002	11,000	10,000	+1,000
2003	10,000	13,000	-3,000
2004	13,000	6,000	+7,000
2005	16,000	8,000	+7,000
2006	15,000	14,000	+1,000

Source: Office for National Statistics © Crown copyright 2007

+ Denotes a net inflow figure. - Denotes a net outflow figure.

See ONS website for details regarding Total International Migration

The latest data published by the Office for National Statistics on Total International Migration (TIM) to 2006, show that, in 2006, the North East had an estimated +1,000 net in-migrants (the difference between inflow and outflow). This was 6,000 lower than in the previous two years, which were the highest levels since 1991 (when the method to calculate TIM was introduced).

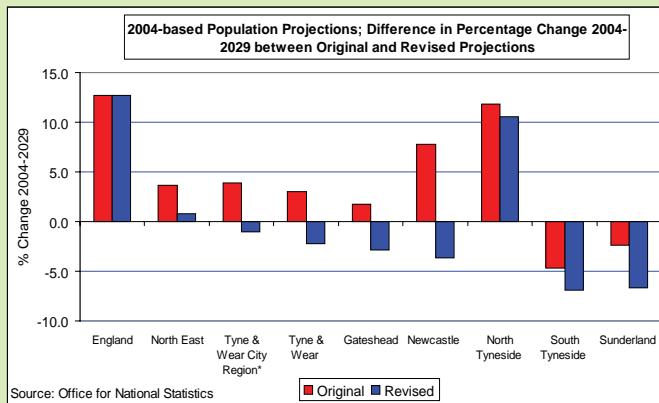


Source: Office for National

In 2006, the inflow of long-term migrants to the North

East fell by 1,000 to +15,000 in-migrants. The outflow of long-term migrants rose by 6,000 to its highest level of -14,000 out-migrants.

## ONS' revised 2004-based Sub-National Population Projections



Source: Office for National Statistics

The Office for National Statistics (ONS) published revised 2004-based SNPPs which run from 2004 to 2029. TWRI has produced the following graph to highlight the differences between the original and revised projections.

The revised estimates show a decline in population in the Tyne & Wear City Region to 2029 of -1.0% (or -16,800). Tyne & Wear also experiences a decline in population (-0.9% to 2011, -1.7% to 2021 and -2.2% over the entire projection period to 2029). This contrasts with population growth in the North East region (+0.8%) and nationally (+12.7%) to 2029.

Caution: Tyne & Wear local authorities and TWRI have serious reservations about the accuracy of the revised 2002-2005 and 2006 MYEs and the revised 2004-based population projections. See TWRI website for further details.

## Crime in Tyne & Wear fallen by 20% over last year

TWRI continue to produce quarterly crime trend 'trafficlights'. Data for the latest quarter, July – September, compared to the same quarter a year ago shows that the total number of BCS (British Crime Survey) crimes have fallen in all five Tyne & Wear Districts. Crime fell in all BCS categories except 'Theft from the person' across Tyne & Wear and its districts. 'Theft from the person' increased by 5% across Tyne & Wear. Gateshead was the only district to show a fall in the number of 'Thefts from the person' over the year.

## Report on Violent Crime

TWRI are currently in the process of producing a report focusing upon Violent Crime in Tyne and Wear. The report will provide an in-depth analysis of the trends surrounding violent crime in Tyne & Wear between 2002/03 to 2006/07. Utilising recorded crime data from Northumbria Police and the British Crime Survey (BCS), the report will examine Violence Against the Person, Sexual Offences, Robbery and Domestic Disputes and will also incorporate an analysis of Victims and Offenders data.

## Reports

Reports published by TWRI are accompanied by new, stand-alone 'Summary Sheets' or 'Bulletins'. 'Summary Sheets' provide a snapshot of key findings from a featured publication and may include a graphic or map to illustrate the most significant findings of a report. TWRI also produce more detailed 'Bulletins' for key reports, providing a more detailed summary of key points and findings.

### Weekly News

Keep up to date with a weekly summary of economic and other stories which affect Tyne & Wear.

All TWRI reports free from

[www.twri.org.uk](http://www.twri.org.uk)

[www.twri.org.uk](http://www.twri.org.uk)